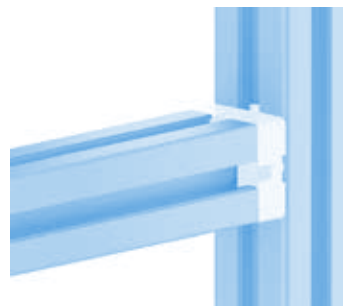
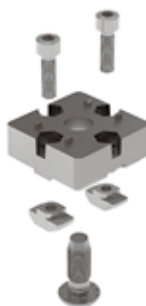
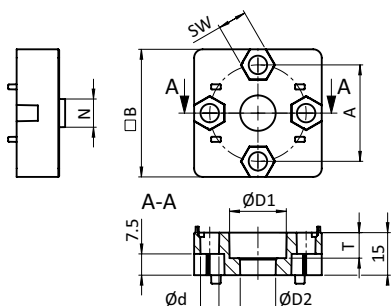




## PLATTENVERBINDER

## PLATE CONNECTOR

<b>Ausführung</b>	Aluminiumdruckguss	<b>Model</b>	Aluminum die-cast
<b>Beschreibung</b>	zum Herstellen einer T-Verbindung zwischen zwei Aluminiumprofilen	<b>Description</b>	To tee connect two aluminum profiles
<b>Material</b>	Plattenverbinder: Aluminiumdruckguss Montageset: Stahl	<b>Material</b>	Plate connector: Aluminum die-cast Assembly set: Steel
<b>Oberfläche</b>	Plattenverbinder: blank / alufarbig lackiert Montageset: verzinkt	<b>Surface</b>	Plate connector: Plain / alu color Assembly set: Zinc plated
<b>Montageset 1</b>	1 Schraube DIN 7984 - M8 × 30, 2 Schrauben DIN 7984 - M5 × 16, 2 Hammermuttern - Nut 8 - M5	<b>Assembly Set 1</b>	1 screw DIN 7984 - M8 × 30, 2 screws DIN 7984 - M5 × 16, 2 hammer nuts - slot 8 - M5
<b>Montageset 2</b>	1 selbstformende Schraube S12 × 30 Torx T50, 2 Schrauben DIN 7984 - M6 × 20, 2 Hammermuttern - Nut 10 - M6	<b>Assembly Set 2</b>	1 self forming screw S12 × 30 Torx T50, 2 screws DIN 7984 - M6 × 20, 2 hammer nuts - slot 10 - M6
<b>Liefereinheit</b>	10 Stück	<b>Pack Quantity</b>	10 pieces
<b>Extras</b>	weitere Oberflächen auf Anfrage	<b>Specials</b>	Other surfaces on request



Plattenverbinder <i>Plate Connector</i>	A [mm]	B [mm]	D1 [mm]	D2 [mm]	N	SW [mm]	T [mm]	Gewicht [g] <i>Weight [g]</i>	Profil <i>Profile</i>	Teil-Nr. <i>Part #</i>
blank <i>Plain</i>	21.0	30	13.6	8.5	8	8	6.0	20.0		099EA30300808R
	29.6	40	20.0	12.5	10	10	6.5	39.0		099EA40401012R
	34.0	45	20.0	12.5	10	10	9.0	50.0		099EA45451012R
blank, inkl. Montageset 1 <i>Plain, incl. assembly set 1</i>	21.0	30	13.6	8.5	8	8	6.0	52.0	B	099EA30300808RS01
blank, inkl. Montageset 2 <i>Plain, incl. assembly set 2</i>	29.6	40	20.0	12.5	10	10	6.5	89.0	B	099EA40401012RS01
	34.0	45	20.0	12.5	10	10	9.0	100.0	B	099EA45451012RS01
alufarbig <i>Alu color</i>	21.0	30	13.6	8.5	8	8	6.0	20.0		099EA30300808A
	29.6	40	20.0	12.5	10	10	6.5	39.0		099EA40401012A
	34.0	45	20.0	12.5	10	10	9.0	50.0		099EA45451012A
alufarbig, inkl. Montageset 1 <i>Alu color, incl. assembly set 1</i>	21.0	30	13.6	8.5	8	8	6.0	52.0	B	099EA30300808AS01
alufarbig, inkl. Montageset 2 <i>Alu color, incl. assembly set 2</i>	29.6	40	20.0	12.5	10	10	6.5	89.0	B	099EA40401012AS01
	34.0	45	20.0	12.5	10	10	9.0	100.0	B	099EA45451012AS01

