

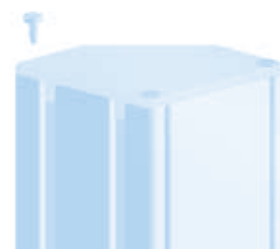
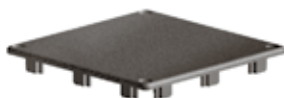
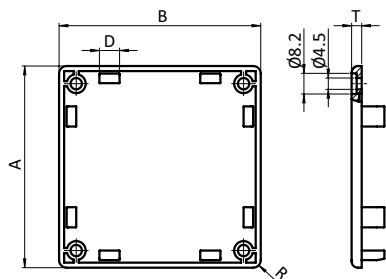


## KANAL-ABDECKKAPPEN

## CONDUIT CAPS

<b>Ausführung</b>	Kunststoff PA	<b>Model</b>	Plastic PA
<b>Beschreibung</b>	zur stirnseitigen Abdeckung von Kanälen; Befestigung mit Schraube M 4	<b>Description</b>	To seal the end openings of conduit systems; Fastening with screw M 4
<b>Material</b>	Kunststoff PA, glasfaserverstärkt	<b>Material</b>	Plastic PA, glass fiber reinforced
<b>Farbe</b>	schwarz	<b>Color</b>	Black
<b>Liefereinheiten</b>	10 / 50 / 100 Stück	<b>Pack Quantities</b>	10 / 50 / 100 pieces
<b>Extras</b>	 elektrostatisch entladend, weitere Größen, weitere Farben auf Anfrage	<b>Specials</b>	 electrostatically discharging, other sizes, other colors on request



Abdeckkappe Cover Cap	R [mm]	T [mm]	Eigenschaft Description	Größe Size	Liefereinheit Pack Quantity	Gewicht [g] Weight [g]	Profil Profile	Teil-Nr. Part #
4 Bohrungen 4 bore holes	4.0	4.0	4 Stützrippen 4 support ribs	40 x 40	100	8.4	I	091168
	3.0	4.0	6 Stützrippen 6 support ribs	40 x 80	50	14.0	I	091194
	3.0	4.0	8 Stützrippen 8 support ribs	40 x 120	10	21.8	I	091201
	4.0	4.0	10 Stützrippen 10 support ribs	40 x 160	10	29.0	I	091204
	3.0	4.0	8 Stützrippen 8 support ribs	80 x 80	10	28.4	I	091195
45° links; 3 Bohrungen 45° left; 3 bore holes	4.0	4.0	4 Stützrippen 4 support ribs	80 x 80	10	27.0	I	091248L
45° rechts; 3 Bohrungen 45° right; 3 bore holes	4.0	4.0	4 Stützrippen 4 support ribs	80 x 80	10	27.0	I	091248R
4 Bohrungen 4 bore holes	3.0	4.0	10 Stützrippen 10 support ribs	80 x 120	10	46.6	I	091202
	3.0	4.0	12 Stützrippen 12 support ribs	80 x 160	10	59.0	I	091203
20° links; 4 Bohrungen 20° left; 4 bore holes	4.0	4.0	9 Stützrippen 9 support ribs	80 x 160	10	59.0	I	091249L
20° rechts; 4 Bohrungen 20° right; 4 bore holes	4.0	4.0	9 Stützrippen 9 support ribs	80 x 160	10	59.0	I	091249R
4 Bohrungen 4 bore holes	3.0	4.0	12 Stützrippen 12 support ribs	120 x 120	10	72.8	I	091246
	3.0	4.0	14 Stützrippen 14 support ribs	120 x 160	10	93.0	I	091247