

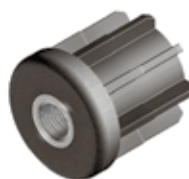
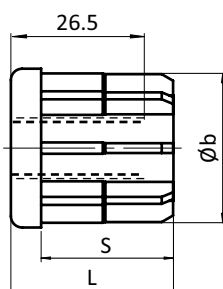
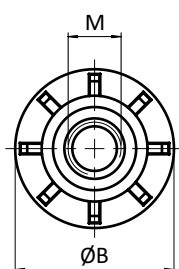


GEWINDESTOPFEN FÜR RUNDROHR Ø 60,3

THREADED BUSH FOR ROUND TUBES Ø 60.3

Ausführung	Kunststoff PA, mit Messing-Gewindeeinsatz
Beschreibung	zur Aufnahme von Stellfüßen an der Stirnseite von Rundrohren
Material	Stopfen: Kunststoff PA, glasfaserverstärkt Gewindeeinsatz: Messing vernickelt
Farbe	schwarz
Liefereinheit	10 Stück
Extras	 elektrostatisch entladend, weitere Größen, weitere Farben auf Anfrage

Model	Plastic PA, with brass threaded insert
Description	To fit leveling feet to round, non-threaded tubes
Material	Bush: Plastic PA, glass fiber reinforced Threaded insert: Nickel plated brass
Color	Black
Pack Quantity	10 pieces
Specials	 electrostatically discharging, other sizes, other colors on request



Gewindestopfen Threaded bushes	B [mm]	L [mm]	M	S [mm]	Rundrohr [mm] Round Tube [mm]	Tragkraft [kg] Max. Load [kg]	Gewicht [g] Weight [g]	Teil-Nr. Part #
Ø 60.3	60.3	55	M12	44	Ø 60.3 × 2.0	1000	113.0	098VR602012
	60.3	55	M14	44	Ø 60.3 × 2.0	1000	106.0	098VR602014
	60.3	55	M16	44	Ø 60.3 × 2.0	1000	108.0	098VR602016
	60.3	55	M20	44	Ø 60.3 × 2.0	1000	110.0	098VR602020
	60.3	55	M12	44	Ø 60.3 × 2.5	1000	113.0	098VR602512
	60.3	55	M14	44	Ø 60.3 × 2.5	1000	106.0	098VR602514
	60.3	55	M16	44	Ø 60.3 × 2.5	1000	98.0	098VR602516
	60.3	55	M20	44	Ø 60.3 × 2.5	1000	109.0	098VR602520
	60.3	55	M12	44	Ø 60.3 × 3.0	1000	112.0	098VR603012
	60.3	55	M14	44	Ø 60.3 × 3.0	1000	105.0	098VR603014
	60.3	55	M16	44	Ø 60.3 × 3.0	1000	98.0	098VR603016
	60.3	55	M20	44	Ø 60.3 × 3.0	1000	108.0	098VR603020
	60.3	55	M12	44	Ø 60.3 × 4.0	1000	110.0	098VR604012
	60.3	55	M14	44	Ø 60.3 × 4.0	1000	105.0	098VR604014
	60.3	55	M16	44	Ø 60.3 × 4.0	1000	102.0	098VR604016
	60.3	55	M20	44	Ø 60.3 × 4.0	1000	105.0	098VR604020