

Bodenelemente *Floor Elements*Gewindestopfen *Threaded Bushes*für Rundrohre *For Round Tubes*



## GEWINDESTOPFEN FÜR RUNDROHR Ø 50,9

## THREADED BUSH FOR ROUND TUBES Ø 50.9


**Ausführung** Kunststoff PA, mit Messing-Gewindeeinsatz

**Beschreibung** zur Aufnahme von Stellfüßen an der Stirnseite von Rundrohren

**Material** Stopfen: Kunststoff PA, glasfaserverstärkt  
Gewindeeinsatz: Messing vernickelt

**Farbe** schwarz

**Liefereinheit** 10 Stück

**Extras**  elektrostatisch entladend, weitere Größen, weitere Farben auf Anfrage


**Model** Plastic PA, with brass threaded insert

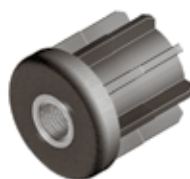
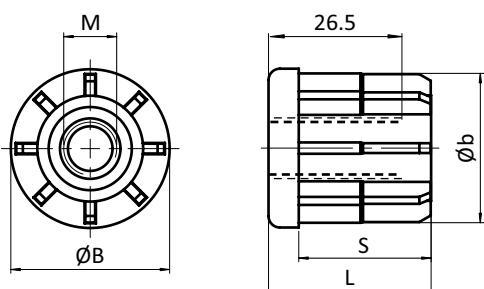
**Description** To fit leveling feet to round, non-threaded tubes

**Material** Bush: Plastic PA, glass fiber reinforced  
Threaded insert: Nickel plated brass

**Color** Black

**Pack Quantity** 10 pieces

**Specials**  electrostatically discharging, other sizes, other colors on request



Gewindestopfen Threaded bushes	B [mm]	L [mm]	M	S [mm]	Rundrohr [mm] Round Tube [mm]	Tragkraft [kg] Max. Load [kg]	Gewicht [g] Weight [g]	Teil-Nr. Part #
Ø 50.9	50.9	55	M12	44	Ø 50.9 × 1.5	1000	102.0	<a href="#">098VR511512</a>
	50.9	55	M14	44	Ø 50.9 × 1.5	1000	83.0	<a href="#">098VR511514</a>
	50.9	55	M16	44	Ø 50.9 × 1.5	1000	87.0	<a href="#">098VR511516</a>
	50.9	55	M20	44	Ø 50.9 × 1.5	1000	89.5	<a href="#">098VR511520</a>
	50.9	55	M12	44	Ø 50.9 × 2.0	1000	92.0	<a href="#">098VR512012</a>
	50.9	55	M14	44	Ø 50.9 × 2.0	1000	83.0	<a href="#">098VR512014</a>
	50.9	55	M16	44	Ø 50.9 × 2.0	1000	87.0	<a href="#">098VR512016</a>
	50.9	55	M20	44	Ø 50.9 × 2.0	1000	83.0	<a href="#">098VR512020</a>
	50.9	55	M12	44	Ø 50.9 × 2.5	1000	92.0	<a href="#">098VR512512</a>
	50.9	55	M14	44	Ø 50.9 × 2.5	1000	83.0	<a href="#">098VR512514</a>
	50.9	55	M16	44	Ø 50.9 × 2.5	1000	87.0	<a href="#">098VR512516</a>
	50.9	55	M20	44	Ø 50.9 × 2.5	1000	83.0	<a href="#">098VR512520</a>