



GEWINDESTOPFEN FÜR RUNDROHR Ø 38

THREADED BUSH FOR ROUND TUBES Ø 38


Ausführung Kunststoff PA, mit Messing-Gewindeinsatz

Beschreibung zur Aufnahme von Stellfüßen an der Stirnseite von Rundrohren

Material Stopfen: Kunststoff PA, glasfaserverstärkt
Gewindeinsatz: Messing vernickelt

Farbe schwarz

Liefereinheit 10 Stück

Extras  elektrostatisch entladend, weitere Größen, weitere Farben auf Anfrage


Model Plastic PA, with brass threaded insert

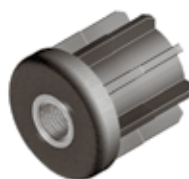
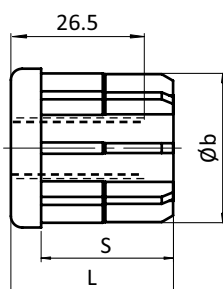
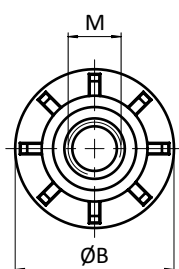
Description To fit leveling feet to round, non-threaded tubes

Material Bush: Plastic PA, glass fiber reinforced
Threaded insert: Nickel plated brass

Color Black

Pack Quantity 10 pieces

Specials  electrostatically discharging, other sizes, other colors on request



Gewindestopfen Threaded bushes	B [mm]	L [mm]	M	S [mm]	Rundrohr [mm] Round Tube [mm]	Tragkraft [kg] Max. Load [kg]	Gewicht [g] Weight [g]	Teil-Nr. Part #
Ø 38	38.0	43	M10	35	Ø 38 × 1.5	600	76.0	098VR381510
	38.0	43	M12	35	Ø 38 × 1.5	600	69.0	098VR381512
	38.0	43	M14	35	Ø 38 × 1.5	600	60.0	098VR381514
	38.0	43	M16	35	Ø 38 × 1.5	600	64.0	098VR381516
	38.0	43	M10	35	Ø 38 × 2.0	600	76.0	098VR382010
	38.0	43	M12	35	Ø 38 × 2.0	600	69.0	098VR382012
	38.0	43	M14	35	Ø 38 × 2.0	600	60.0	098VR382014
	38.0	43	M16	35	Ø 38 × 2.0	600	64.0	098VR382016
	38.0	43	M10	35	Ø 38 × 2.5	600	76.0	098VR382510
	38.0	43	M12	35	Ø 38 × 2.5	600	69.0	098VR382512
	38.0	43	M14	35	Ø 38 × 2.5	600	60.0	098VR382514
	38.0	43	M16	35	Ø 38 × 2.5	600	64.0	098VR382516