

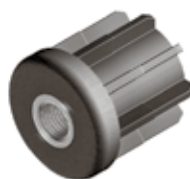
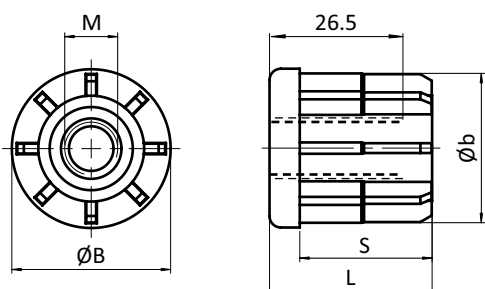
Bodenelemente *Floor Elements*Gewindestopfen *Threaded Bushes*für Rundrohre *For Round Tubes*



GEWINDESTOPFEN FÜR RUNDROHR Ø 30

THREADED BUSH FOR ROUND TUBES Ø 30

Ausführung	Kunststoff PA, mit Messing-Gewindeeinsatz	Model	Plastic PA, with brass threaded insert
Beschreibung	zur Aufnahme von Stellfüßen an der Stirnseite von Rundrohren	Description	To fit leveling feet to round, non-threaded tubes
Material	Stopfen: Kunststoff PA, glasfaserverstärkt Gewindeeinsatz: Messing vernickelt	Material	Bush: Plastic PA, glass fiber reinforced Threaded insert: Nickel plated brass
Farbe	schwarz	Color	Black
Liefereinheit	10 Stück	Pack Quantity	10 pieces
Extras	⚡ elektrostatisch entladend, weitere Größen, weitere Farben auf Anfrage	Specials	⚡ electrostatically discharging, other sizes, other colors on request



Gewindestopfen <i>Threaded bushes</i>	B [mm]	L [mm]	M	S [mm]	Rundrohr [mm] <i>Round Tube [mm]</i>	Tragkraft [kg] <i>Max. Load [kg]</i>	Gewicht [g] <i>Weight [g]</i>	Teil-Nr. <i>Part #</i>
Ø 30	30.0	33	M8	27	Ø 30 × 1.0	500	64.0	098VR301008
	30.0	33	M10	27	Ø 30 × 1.0	500	59.0	098VR301010
	30.0	33	M12	27	Ø 30 × 1.0	500	52.0	098VR301012
	30.0	33	M14	27	Ø 30 × 1.0	500	43.0	098VR301014
	30.0	33	M16	27	Ø 30 × 1.0	500	47.0	098VR301016
	30.0	33	M8	27	Ø 30 × 1.5	500	58.0	098VR301508
	30.0	33	M10	27	Ø 30 × 1.5	500	52.0	098VR301510
	30.0	33	M12	27	Ø 30 × 1.5	500	50.0	098VR301512
	30.0	33	M14	27	Ø 30 × 1.5	500	39.0	098VR301514
	30.0	33	M16	27	Ø 30 × 1.5	500	34.0	098VR301516
	30.0	33	M8	27	Ø 30 × 2.0	500	57.5	098VR302008
	30.0	33	M10	27	Ø 30 × 2.0	500	52.5	098VR302010
	30.0	33	M12	27	Ø 30 × 2.0	500	50.5	098VR302012
	30.0	33	M14	27	Ø 30 × 2.0	500	42.5	098VR302014
	30.0	33	M16	27	Ø 30 × 2.0	500	47.5	098VR302016
	30.0	33	M8	27	Ø 30 × 2.5	500	57.0	098VR302508
	30.0	33	M10	27	Ø 30 × 2.5	500	52.0	098VR302510
	30.0	33	M12	27	Ø 30 × 2.5	500	50.0	098VR302512
	30.0	33	M14	27	Ø 30 × 2.5	500	42.0	098VR302514
	30.0	33	M16	27	Ø 30 × 2.5	500	47.0	098VR302516