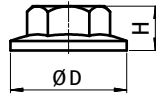
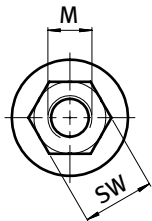


**FLANSCHMUTTER****FLANGE NUT****Ausführung** Stahl / Edelstahl**Model** Steel / stainless steel**Beschreibung** zur Verwendung in Verbindung mit einer Hammerschraube**Description** To be used in conjunction with a hammer head screw**Material** Stahl, verzinkt / Edelstahl**Material** Zinc plated steel / stainless steel**Liefereinheit** 100 Stück**Pack Quantity** 100 pieces

Flanschmutter Flange Nut		D [mm]	H [mm]	M	SW [mm]	Gewicht [g] Weight [g]	Teil-Nr. Part #
Stahl <i>Steel</i>		14.0	6.0	M6	10	3.0	<b>4DIN6923M06M</b>
		21.0	8.0	M8	13	6.0	<b>340ME154</b>
Edelstahl <i>Stainless steel</i>		14.0	6.0	M6	10	3.0	<b>4DIN6923M06E</b>
		17.9	8.0	M8	13	6.0	<b>4DIN6923M08ES02</b>