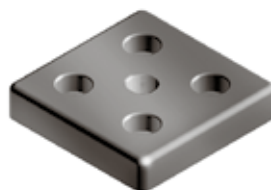
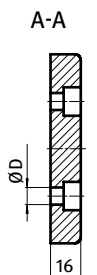
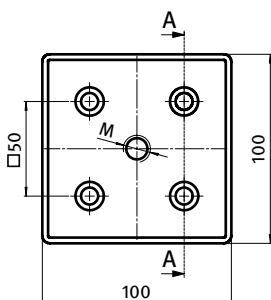


**TRANSPORT- UND FUßPLATTE 100 × 100****TRANSPORT AND BASE PLATE 100 × 100**

Ausführung	Zinkdruckguss	Model	Zinc die-cast
Beschreibung	zur Aufnahme von Stellfüßen, Rollen, Haken oder ähnlichen Bauteilen; stirnseitig mit den Profilen verschraubbar	Description	To mount leveling feet, rollers, hooks or similar components; screw joint to the face of the profile
Material	Zinkdruckguss	Material	Zinc die-cast
Liefereinheit	10 Stück	Pack Quantity	10 pieces
Extras	weitere Oberflächen, weitere Farben auf Anfrage	Specials	Other surfaces, other colors on request



Transport- und Fußplatte 100 × 100 <i>Transport and Base Plate 100 × 100</i>	M	ØD [mm]	Gewicht [g] <i>Weight [g]</i>	Teil-Nr <i>Part#</i>
pulverbeschichtet <i>Powder coated</i>	M10	9 (M8)	548.0	093T1001001008S
	M10	14.5 (M12)	541.0	093T1001001012S
	M12	9 (M8)	545.0	093T1001001208S
	M12	14.5 (M12)	538.0	093T1001001212S
	M14	9 (M8)	541.0	093T1001001408S
	M14	14.5 (M12)	531.0	093T1001001412S
	M16	9 (M8)	540.0	093T1001001608S
	M16	14.5 (M12)	527.0	093T1001001612S
	M20	9 (M8)	531.0	093T1001002008S
	M20	14.5 (M12)	521.0	093T1001002012S
blank <i>Plain</i>	M10	9 (M8)	548.0	093T1001001008R
	M10	14.5 (M12)	541.0	093T1001001012R
	M12	9 (M8)	545.0	093T1001001208R
	M12	14.5 (M12)	538.0	093T1001001212R
	M14	9 (M8)	541.0	093T1001001408R
	M14	14.5 (M12)	531.0	093T1001001412R
	M16	9 (M8)	540.0	093T1001001608R
	M16	14.5 (M12)	527.0	093T1001001612R
	M20	9 (M8)	531.0	093T1001002008R
	M20	14.5 (M12)	521.0	093T1001002012R