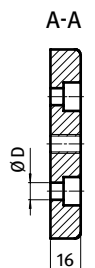
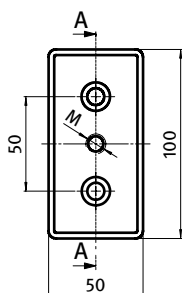




## TRANSPORT- UND FUßPLATTE 50 × 100

## TRANSPORT AND BASE PLATE 50 × 100

<b>Ausführung</b>	Zinkdruckguss	<b>Model</b>	Zinc die-cast
<b>Beschreibung</b>	zur Aufnahme von Stellfüßen, Rollen, Haken oder ähnlichen Bauteilen; stirnseitig mit den Profilen verschraubbar	<b>Description</b>	To mount leveling feet, rollers, hooks or similar components; screw joint to the face of the profile
<b>Material</b>	Zinkdruckguss	<b>Material</b>	Zinc die-cast
<b>Liefereinheit</b>	10 Stück	<b>Pack Quantity</b>	10 pieces
<b>Extras</b>	weitere Oberflächen, weitere Farben auf Anfrage	<b>Specials</b>	Other surfaces, other colors on request



Transport- und Fußplatte 50 × 100 <i>Transport and Base Plate 50 × 100</i>	M	ØD [mm]	Gewicht [g] <i>Weight [g]</i>	Teil-Nr <i>Part#</i>
pulverbeschichtet <i>Powder coated</i>	M10	11 (M10)	310.0	<a href="#">093T501001010S</a>
	M10	14.5 (M12)	296.0	<a href="#">093T501001012S</a>
	M12	11 (M10)	306.0	<a href="#">093T501001210S</a>
	M12	14.5 (M12)	292.0	<a href="#">093T501001212S</a>
	M14	11 (M10)	300.0	<a href="#">093T501001410S</a>
	M14	14.5 (M12)	286.0	<a href="#">093T501001412S</a>
	M16	11 (M10)	296.0	<a href="#">093T501001610S</a>
	M16	14.5 (M12)	280.0	<a href="#">093T501001612S</a>
	M20	11 (M10)	289.0	<a href="#">093T501002010S</a>
	M20	14.5 (M12)	273.0	<a href="#">093T501002012S</a>
blank <i>Plain</i>	M10	11 (M10)	310.0	<a href="#">093T501001010R</a>
	M10	14.5 (M12)	296.0	<a href="#">093T501001012R</a>
	M12	11 (M10)	306.0	<a href="#">093T501001210R</a>
	M12	14.5 (M12)	292.0	<a href="#">093T501001212R</a>
	M14	11 (M10)	300.0	<a href="#">093T501001410R</a>
	M14	14.5 (M12)	286.0	<a href="#">093T501001412R</a>
	M16	11 (M10)	296.0	<a href="#">093T501001610R</a>
	M16	14.5 (M12)	280.0	<a href="#">093T501001612R</a>
	M20	11 (M10)	289.0	<a href="#">093T501002010R</a>
	M20	14.5 (M12)	273.0	<a href="#">093T501002012R</a>