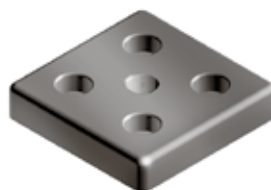
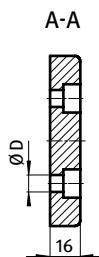
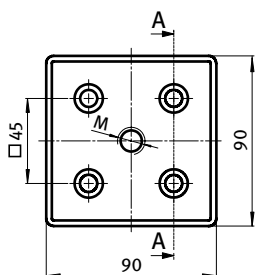




TRANSPORT- UND FUßPLATTE 90 × 90

TRANSPORT AND BASE PLATE 90 × 90

Ausführung	Zinkdruckguss	Model	Zinc die-cast
Beschreibung	zur Aufnahme von Stellfüßen, Rollen, Haken oder ähnlichen Bauteilen; stirnseitig mit den Profilen verschraubbar	Description	To mount leveling feet, rollers, hooks or similar components; screw joint to the face of the profile
Material	Zinkdruckguss	Material	Zinc die-cast
Liefereinheit	10 Stück	Pack Quantity	10 pieces
Extras	weitere Oberflächen, weitere Farben auf Anfrage	Specials	Other surfaces, other colors on request



Transport- und Fußplatte 90 × 90 <i>Transport and Base Plate 90 × 90</i>	M	ØD [mm]	Gewicht [g] <i>Weight [g]</i>	Teil-Nr <i>Part#</i>
pulverbeschichtet <i>Powder coated</i>	M10	9 (M8)	522.0	093T90901008S
	M10	14.5 (M12)	482.0	093T90901012S
	M12	9 (M8)	520.0	093T90901208S
	M12	14.5 (M12)	480.0	093T90901212S
	M14	9 (M8)	519.0	093T90901408S
	M14	14.5 (M12)	475.0	093T90901412S
	M16	9 (M8)	516.0	093T90901608S
	M16	14.5 (M12)	471.0	093T90901612S
	M20	9 (M8)	510.0	093T90902008S
	M20	14.5 (M12)	463.0	093T90902012S
blank <i>Plain</i>	M10	9 (M8)	522.0	093T90901008R
	M10	14.5 (M12)	482.0	093T90901012R
	M12	9 (M8)	520.0	093T90901208R
	M12	14.5 (M12)	480.0	093T90901212R
	M14	9 (M8)	519.0	093T90901408R
	M14	14.5 (M12)	475.0	093T90901412R
	M16	9 (M8)	516.0	093T90901608R
	M16	14.5 (M12)	471.0	093T90901612R
	M20	9 (M8)	510.0	093T90902008R
	M20	14.5 (M12)	463.0	093T90902012R