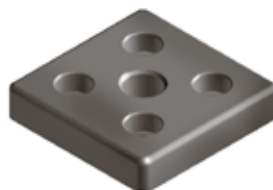
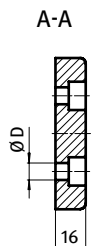
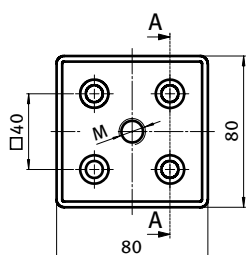




TRANSPORT- UND FUßPLATTE 80 × 80

TRANSPORT AND BASE PLATE 80 × 80

Ausführung	Zinkdruckguss	Model	Zinc die-cast
Beschreibung	zur Aufnahme von Stellfüßen, Rollen, Haken oder ähnlichen Bauteilen; stirnseitig mit den Profilen verschraubbar	Description	To mount leveling feet, rollers, hooks or similar components; screw joint to the face of the profile
Material	Zinkdruckguss	Material	Zinc die-cast
Liefereinheit	10 Stück	Pack Quantity	10 pieces
Extras	weitere Oberflächen, weitere Farben auf Anfrage	Specials	Other surfaces, other colors on request



Transport- und Fußplatte 80 × 80 <i>Transport and Base Plate 80 × 80</i>	M	ØD [mm]	Gewicht [g] <i>Weight [g]</i>	Teil-Nr <i>Part#</i>
pulverbeschichtet <i>Powder coated</i>	M8	9 (M8)	483.0	093T80800808S
	M8	14.5 (M12)	384.0	093T80800812S
	M10	9 (M8)	436.0	093T80801008S
	M10	14.5 (M12)	382.0	093T80801012S
	M12	9 (M8)	433.0	093T80801208S
	M12	14.5 (M12)	380.0	093T80801212S
	M14	9 (M8)	437.0	093T80801408S
	M14	14.5 (M12)	374.0	093T80801412S
	M16	9 (M8)	425.0	093T80801608S
	M16	14.5 (M12)	367.0	093T80801612S
	M20	9 (M8)	416.0	093T80802008S
	M20	14.5 (M12)	353.0	093T80802012S
blank <i>Plain</i>	M8	9 (M8)	483.0	093T80800808R
	M8	14.5 (M12)	384.0	093T80800812R
	M10	9 (M8)	436.0	093T80801008R
	M10	14.5 (M12)	382.0	093T80801012R
	M12	9 (M8)	433.0	093T80801208R
	M12	14.5 (M12)	380.0	093T80801212R
	M14	9 (M8)	437.0	093T80801408R
	M14	14.5 (M12)	374.0	093T80801412R
	M16	9 (M8)	425.0	093T80801608R
	M16	14.5 (M12)	367.0	093T80801612R
	M20	9 (M8)	416.0	093T80802008R
	M20	14.5 (M12)	353.0	093T80802012R