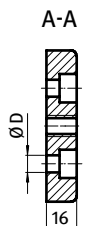
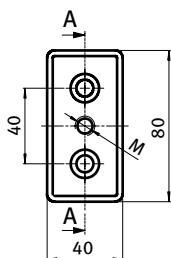




## TRANSPORT- UND FUßPLATTE 40 × 80

## TRANSPORT AND BASE PLATE 40 × 80

<b>Ausführung</b>	Zinkdruckguss	<b>Model</b>	Zinc die-cast
<b>Beschreibung</b>	zur Aufnahme von Stellfüßen, Rollen, Haken oder ähnlichen Bauteilen; stirnseitig mit den Profilen verschraubbar	<b>Description</b>	To mount leveling feet, rollers, hooks or similar components; screw joint to the face of the profile
<b>Material</b>	Zinkdruckguss	<b>Material</b>	Zinc die-cast
<b>Liefereinheit</b>	10 Stück	<b>Pack Quantity</b>	10 pieces
<b>Extras</b>	weitere Oberflächen, weitere Farben auf Anfrage	<b>Specials</b>	Other surfaces, other colors on request



Transport- und Fußplatte 40 × 80 <i>Transport and Base Plate 40 × 80</i>	M	ØD [mm]	Gewicht [g] <i>Weight [g]</i>	Teil-Nr <i>Part#</i>
pulverbeschichtet <i>Powder coated</i>	M8	9 (M8)	213.0	093T40800808S
	M8	14.5 (M12)	192.0	093T40800812S
	M10	9 (M8)	211.0	093T40801008S
	M10	14.5 (M12)	190.0	093T40801012S
	M12	9 (M8)	209.0	093T40801208S
	M12	14.5 (M12)	188.0	093T40801212S
	M14	9 (M8)	203.0	093T40801408S
	M14	14.5 (M12)	182.0	093T40801412S
	M16	9 (M8)	199.0	093T40801608S
	M16	14.5 (M12)	178.0	093T40801612S
blank <i>Plain</i>	M20	9 (M8)	195.0	093T40802008S
	M8	9 (M8)	213.0	093T40800808R
	M8	14.5 (M12)	192.0	093T40800812R
	M10	9 (M8)	211.0	093T40801008R
	M10	14.5 (M12)	190.0	093T40801012R
	M12	9 (M8)	209.0	093T40801208R
	M12	14.5 (M12)	188.0	093T40801212R
	M14	9 (M8)	203.0	093T40801408R
	M14	14.5 (M12)	182.0	093T40801412R
	M16	9 (M8)	199.0	093T40801608R
M16	14.5 (M12)	178.0	093T40801612R	
M20	9 (M8)	195.0	093T40802008R	