

ANSCHLAGPUFFER

STOP BUFFER

Ausführung in zylindrischer Form

Beschreibung zum Dämpfen des Aufpralls von Türen, Klappen und Abdeckungen

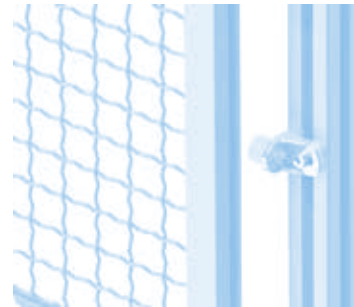
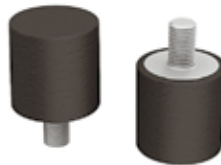
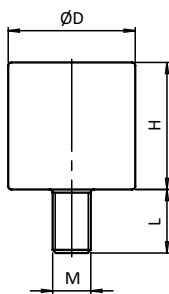
Material Puffer: Gummi Naturkautschuk (NR), ≈55 Shore A
 Gewindestück: Stahl

Liefereinheit 20 Stück

Model With cylindrical shape

Description End-position damping of doors, flaps and covers

Material Buffer: Natural rubber (NR), ≈55 Shore A
 Threaded bolt: Steel

Pack Quantity 20 pieces


Anschlagpuffer Stop Buffer	D [mm]	H [mm]	L [mm]	Gewinde Thread	Gewicht [g] Weight [g]	Teil-Nr. Part #
	20.0	15.0	10.0	M6	11.0	051DC551520MM0610
	20.0	20.0	10.0	M6	13.0	051DC552020MM0610