

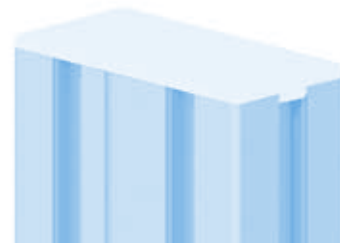
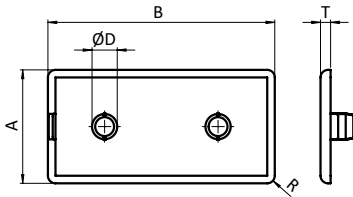


Abdeckelemente *Cover Elements*Abdeckkappen *Cover Caps*Rastermaß 45 *Modular Dimension 45*

## ABDECKKAPPE FÜR RASTERMAß 45 MM

## COVER CAP FOR 45 MM MODULAR DIMENSION

<b>Ausführung</b>	Rastermaß 45 mm	<b>Model</b>	45 mm modular dimension
<b>Beschreibung</b>	zum Abdecken der Profilenenden	<b>Description</b>	To cover the end of the profile
<b>Material</b>	Kunststoff PA, glasfaserverstärkt	<b>Material</b>	Plastic PA, glass fiber reinforced
<b>Farbe</b>	schwarz	<b>Color</b>	Black
<b>Liefereinheit</b>	100 Stück	<b>Pack Quantity</b>	100 pieces
<b>Extras</b>	 elektrostatisch entladend, weitere Größen, weitere Farben auf Anfrage	<b>Specials</b>	 electrostatically discharging, other sizes, other colors on request



Abdeckkappe <i>Cover Cap</i>	ØD [mm]	R [mm]	T [mm]	Eigenschaft <i>Description</i>	Maße [mm] <i>Dimensions [mm]</i>	Profil <i>Profile</i>	Teil-Nr. <i>Part #</i>
Nut 10 <i>Slot 10</i>	4.0	3.0	4.0	4 Stifte <i>4 pins</i>	22.5 x 45	B	<b>091002</b>
	10.4 (10.0)	4.0	4.0	1 Kernloch-Zapfen <i>1 Pin for core hole</i>	45 x 45	B	<b>091011</b>
	4.0	3.0	4.0	mit Loch Ø 17.0 mm, 4 Stifte 4.3 <i>With hole Ø 17.0 mm, 4 pins 4.3</i>	45 x 45	B	<b>091015</b>
	10.8 (10.0)	3.0	4.0	1 Kernloch-Zapfen <i>1 Pin for core hole</i>	45 x 60	B	<b>091017</b>
	(4.0)	3.0	4.0	mit Loch Ø 18.3 mm, 4 Stifte 4.3 <i>With hole Ø 18.3 mm, 4 pins 4.3</i>	45 x 60	B	<b>091083</b>
	10.4 (10.0)	3.0	4.0	2 Kernloch-Zapfen <i>2 Pins for core hole</i>	45 x 90	B	<b>091006</b>
	-	3.5	4.0	4 Stützrippen <i>4 support ribs</i>	90 x 90	B	<b>091024</b>
	15.1	3.0	4.0	neue Ausführung, 4 Stützrippen <i>New version, 4 support ribs</i>	90 x 90	B	<b>091207</b>
	10.2 (10.0)	5.0	4.0	4 Kernloch-Zapfen, 4 Stifte <i>4 Pins for core hole, 4 pins</i>	90 x 90 leicht (superleicht) <i>90 x 90 light (superlight)</i>	B	<b>091030</b>
	15.2	3.0	4.0	8 Stützrippen <i>8 support ribs</i>	90 x 90 leicht (superleicht) <i>90 x 90 light (superlight)</i>	B	<b>091276</b>