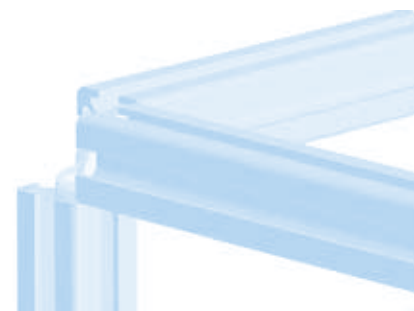
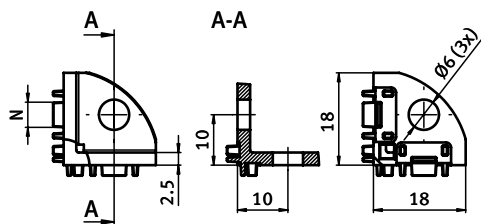




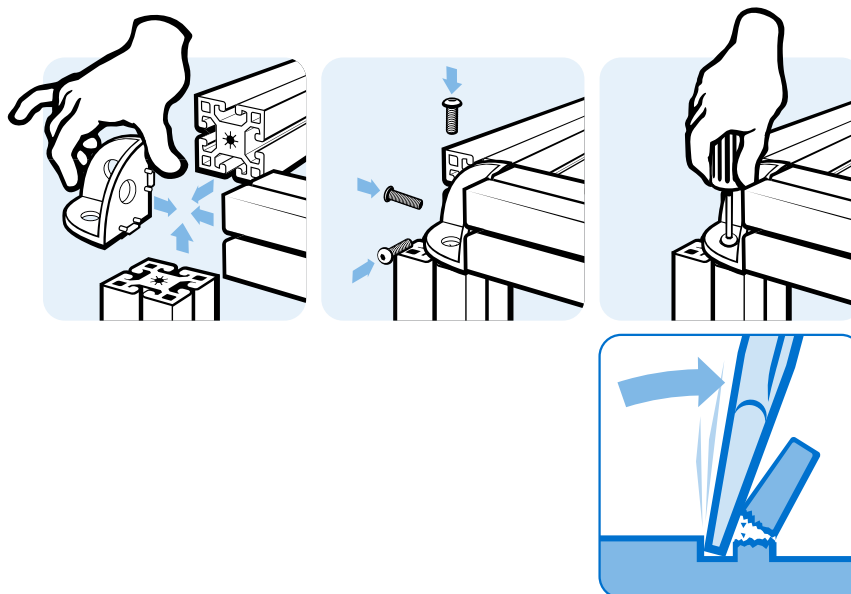
**ECKWINKEL 20**

**3-WAY CONNECTION ANGLE 20**

<b>Ausführung</b>	Zinkdruckguss, für Profil 20	<b>Model</b>	Zinc die-cast, for profile 20
<b>Beschreibung</b>	zur rechtwinkligen Verbindung von bis zu drei Aluminiumprofilen	<b>Description</b>	To connect up to three aluminum profiles at right angles
<b>Material</b>	Zinkdruckguss	<b>Material</b>	Zinc die-cast
<b>Befestigung</b>	Senkschrauben M5	<b>Fastening</b>	Countersunk screws M5
<b>Liefereinheit</b>	50 Stück	<b>Pack Quantity</b>	50 pieces



Eckwinkel 20 3-way Connection Angle 20	N	für Schraube for Screw	Gewicht [g] Weight [g]	Profil Profile	Teil-Nr. Part #
	5	M5	10.0	I	<b>093WE201N05</b>



4