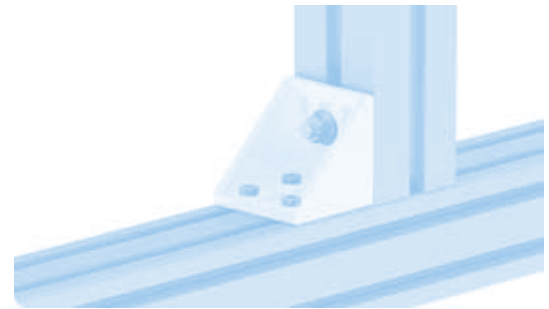
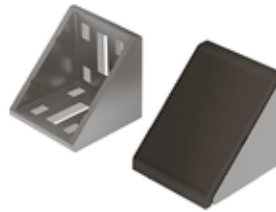
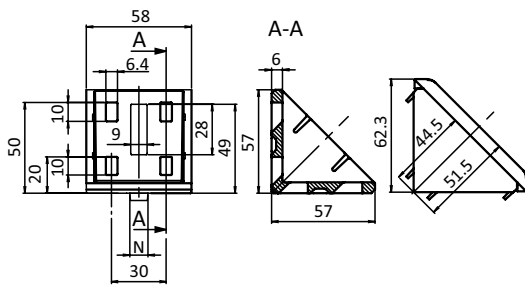




ALUWINKEL 60

ALU CONNECTION ANGLE 60

| | | | |
|----------------------|---|-----------------------|---|
| Ausführung | Aluminiumdruckguss, ab Profil 60 | Model | Aluminum die-cast, profile 60 and up |
| Beschreibung | zur rechtwinkligen Verbindung von Profilen und Flächenelementen; die offene Seite des Winkels kann durch die Abdeckkappe verschlossen werden | Description | To connect two aluminum profiles or panels at right angles; the connection angle can be closed with the cover cap |
| Material | Winkel: Aluminiumdruckguss Abdeckkappe: Kunststoff PA, glasfaserverstärkt Nutfixierung: Kunststoff PA, glasfaserverstärkt Montageset: Stahl | Material | Angle: Aluminum die-cast Cover cap: Plastic PA, glass fiber reinforced Centering piece: Plastic PA, glass fiber reinforced Assembly set: Steel |
| Farbe | Abdeckkappe: schwarz Nutfixierung: schwarz | Color | Cover cap: Black Centering piece: Black |
| Montageset 2 | 4 Hammermütern - Nut 8 - M6, 4 Schrauben DIN 7984 - M6 x 14, 1 Hammerschraube - Nut 10 - M8 x 20, 1 Flanschmutter - M8, 2 Nutfixierungen - Nut 8 auf Nut 10 | Assembly Set 2 | 4 hammer nuts - Nut 8 - M6, 4 screws DIN 7984 - M6 x 14, 1 hammer screw - Nut 10 - M8 x 20, 1 flange nut - M8, 2 plastic adapters - Slot 8 to slot 10 |
| Montageset 3 | 2 Hammerschrauben - M8 x 20, 2 Flanschmütern M8 | Assembly Set 3 | 2 hammer head screws - M8 x 20, 2 flange nuts - M8 |
| Liefereinheit | 10 Stück | Pack Quantity | 10 pieces |
| Extras | weitere Oberflächen, weitere Farben auf Anfrage | Specials | Other surfaces, other colors on request |



Aluwinkel 60
Alu Connection Angle 60

| | N | Gewicht [g] Weight [g] | Profil Profile | Teil-Nr. Part # |
|--|---|---------------------------|-------------------|----------------------|
| blank <i>Plain</i> | | 103.0 | | 093W603 |
| | 8 | 106.0 | | 093W603N08 |
| | 10 | 109.0 | | 093W603N10 |
| alufarbig <i>Alu color</i> | 8 | 107.0 | | 093W603N08S03 |
| | 10 | 111.0 | | 093W603N10S04 |
| Nutfixierung <i>Centering pieces</i> | Nut 8 auf Nut 10 <i>Slot 8 to slot 10</i> | 1.0 | | 093W02 |
| Abdeckkappe <i>Cover cap</i> | | 25.8 | | 093WA603 |
| blank, inkl. Montageset 1 <i>Plain, with assembly set 1</i> | 8 | 172.0 | B | 093W603N08S01 |
| blank, inkl. Montageset 2 <i>Plain, with assembly set 2</i> | 8 | 160.0 | B | 093W603N08S02 |
| blank, inkl. Montageset 3 <i>Plain, with assembly set 3</i> | 10 | 155.0 | B | 093W603N10S01 |
| alufarbig, inkl. Montageset 1 <i>Alu color, with assembly set1</i> | 8 | 174.0 | B | 093W603N08S04 |
| alufarbig, inkl. Montageset 2 <i>Alu color, with assembly set2</i> | 8 | 160.0 | B | 093W603N08S05 |
| alufarbig, inkl. Montageset 3 <i>Alu color, with assembly set3</i> | 10 | 142.0 | B | 093W603N10S03 |