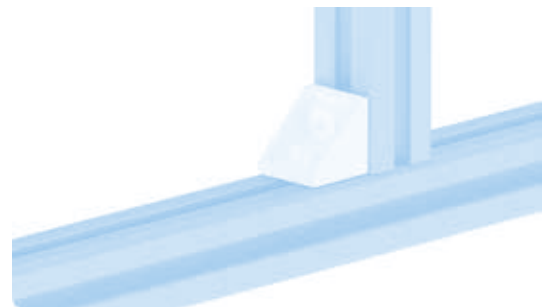
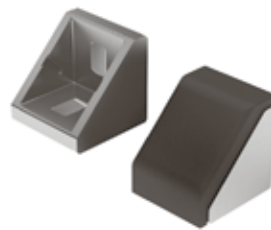
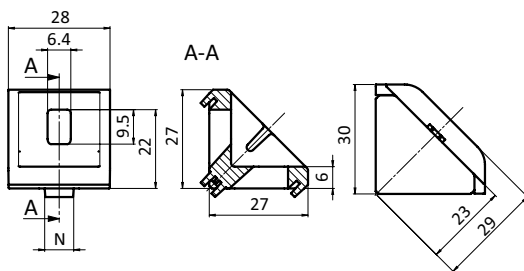




ALUWINKEL 30

ALU CONNECTION ANGLE 30

Ausführung	Aluminiumdruckguss, ab Profil 30	Model	Aluminum die-cast, profile 30 and up
Beschreibung	zur rechtwinkligen Verbindung von Profilen und Flächenelementen; die offene Seite des Winkels kann durch die Abdeckkappe verschlossen werden	Description	To connect two aluminum profiles or panels at right angles; the connection angle can be closed with the cover cap
Material	Winkel: Aluminiumdruckguss Abdeckkappe: Kunststoff PA, glasfaserverstärkt Nutfixierung: Kunststoff PA, glasfaserverstärkt Montageset: Stahl	Material	Angle: Aluminum die-cast Cover Cap: Plastic PA, glass fiber reinforced Centering piece: Nylon PA, glass fiber reinforced Assembly set: Steel
Farbe	Abdeckkappe: schwarz Nutfixierung: schwarz	Color	Cover cap: Black Centering pieces: Black
Montageset 1	2 Hammermüttern - Nut 8 - M6, 2 Schrauben DIN 7984 - M6 × 14	Assembly Set 1	2 hammer nuts - slot 8 - M6, 2 screws DIN 7984 - M6 × 14
Montageset 2	1 Hammermutter - Nut 8 - M6, 1 Schraube DIN 7984 - M6 × 14, 1 Hammermutter - Nut 10 - M6, 1 Schraube DIN 7984 - M6 × 18, 2 Nutfixierungen - Nut 8 auf Nut 10	Assembly Set 2	1 hammer nut - slot 8 - M6, 1 screw DIN 7984 - M6 × 14, 1 hammer nut - slot 10 - M6, 1 screw DIN 7984 - M6 × 18, 2 centering pieces - Slot 8 to slot 10
Montageset 3	2 Hammermüttern - Nut 10 - M6, 2 Schrauben DIN 7984 - M6 × 18, 4 Nutfixierungen - Nut 8 auf Nut 10	Assembly Set 3	2 hammer nuts - slot 10 - M6, 2 screws DIN 7984 - M6 × 18, 4 centering pieces - Nut 8 auf Nut 10
Liefereinheit	10 Stück	Pack Quantity	10 pieces
Extras	weitere Oberflächen, weitere Farben auf Anfrage	Specials	Other surfaces, other colors on request
Hinweis	* mittels 2 Nutfixierungen Nut 8 auf Nut 10	Tip	* By means of two plastic adapters Slot 8 to slot 10



Aluwinkel 30 Alu Connection Angle 30	N	Gewicht [g] Weight [g]	Profil Profile	Teil-Nr. Part #
blank <i>Plain</i>		19.8		093W303
	6	20.4		093W303N06
	8	20.6		093W303N08
	*10	20.8		093W303N10
alufarbig <i>Alu color</i>	8	20.6		093W303N08S12
Nutfixierung <i>Centering pieces</i>	Nut 8 auf Nut 10 <i>Slot 8 to slot 10</i>	1.0		093W02
Abdeckkappe <i>Cover cap</i>		5.2		093WA303S02
blank, inkl. Montageset 1 <i>Plain, with assembly set 1</i>	8	35.0	B	093W303N08S11
blank, inkl. Montageset 2 <i>Plain, with assembly set 2</i>	8 / 10	40.0	B	093W303N08S09
blank, inkl. Montageset 3 <i>Plain, with assembly set 3</i>	10	46.0	B	093W303N10S02
alufarbig, inkl. Montageset 1 <i>Alu color, with assembly set 1</i>	8	48.0	B	093W303N08S13
alufarbig, inkl. Montageset 2 <i>Alu color, with assembly set 2</i>	8 / 10	38.0	B	093W303N08S14
alufarbig, inkl. Montageset 3 <i>Alu color, with assembly set 3</i>	10	46.0	B	093W303N10S03