

Scharniere Hinges

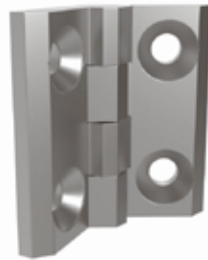
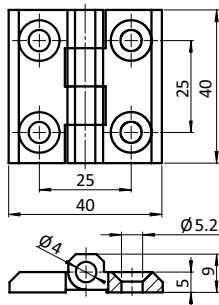
Edelstahlscharniere *Stainless Steel Hinges*

EDELSTAHLCHARNIER 40 × 40

STAINLESS STEEL HINGE 40 × 40

Ausführung nicht aushängbar
Beschreibung Scharnier für schwere Beanspruchung
Material Flügel: Edelstahl 1.4401
 Achse: Edelstahl 1.4401
Befestigung vorderseitig mit Senkschrauben
Liefereinheit 10 Stück

Model Non-detachable
Description Hinge for heavy usage
Material Wings: Stainless steel SS316
 Axle: Stainless steel SS316
Fastening From the front, using countersunk screws
Pack Quantity 10 pieces



Edelstahlscharnier 40 × 40
 Stainless Steel Hinge 40 × 40

F_{Amax}
 [N]

F_{Rmax}
 [N]

Gewicht [g]
 Weight [g]

Teil-Nr.
 Part #

700

1200

61.00

09574040E