

## Scharniere Hinges

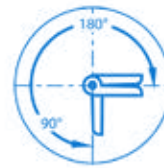
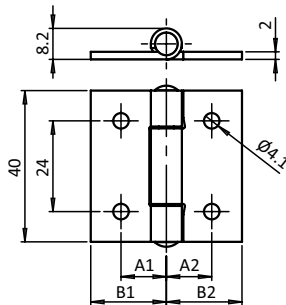
Edelstahlscharniere *Stainless Steel Hinges*

## EDELSTAHLCHARNIER LEICHT

## LIGHT STAINLESS STEEL HINGE

**Ausführung** nicht aushängbar  
**Beschreibung** für Flächenelemente und Aluminiumprofile  
**Material** Flügel: Edelstahl 1.4301  
 Achse: Edelstahl 1.4301  
**Befestigung** vorderseitig mit Linsenkopfschrauben M4  
**Montageset** 4 Linsenkopfschrauben ISO 7380 - M4 × 6,  
 4 Hammermütern M4 - Nut 6  
**Liefereinheit** 10 Stück

**Model** Non-detachable  
**Description** To hinge panels or aluminum profiles  
**Material** Wing: Stainless steel 1.4301  
 Axle: Stainless steel 1.4301  
**Fastening** From the front, using M4 countersunk screws  
**Assembly Set** 4 pan-head screws ISO 7380 - M4 × 6,  
 4 hammer nuts M4 - Nut 6  
**Pack Quantity** 10 pieces



Edelstahlscharnier leicht <i>Light Stainless Steel Hinge</i>	A1 [mm]	A2 [mm]	B1 [mm]	B2 [mm]	F <sub>Amax</sub> [N]	F <sub>Rmax</sub> [N]	Gewicht [g] <i>Weight [g]</i>	Teil-Nr. <i>Part #</i>
	12.0	12.0	20.0	20.0	320.0	390.0	35.5	<b>095072</b>
inkl. Montageset <i>With assembly set</i>	12.0	12.0	20.0	20.0	320.0	390.0	45.0	<b>095072S01</b>