

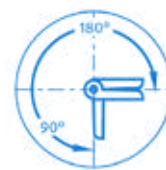
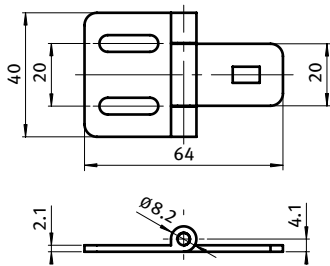
Scharniere Hinges
Stahlscharniere Steel Hinges



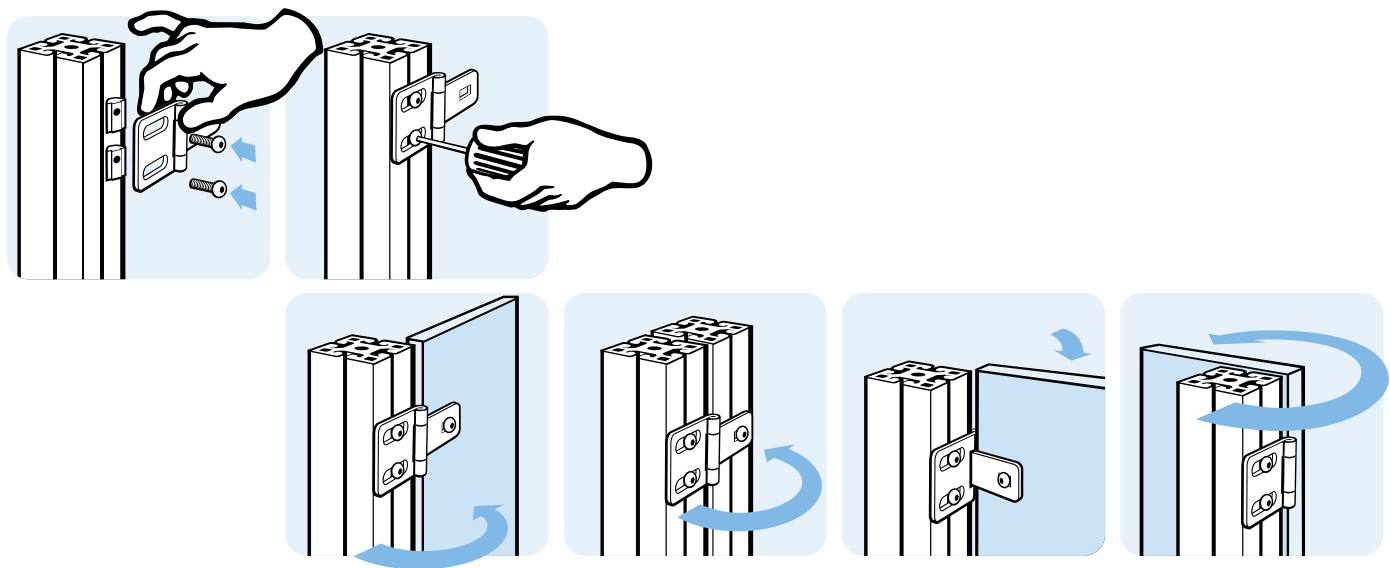
METALLSCHARNIER LEICHT (SET)

LIGHT METAL HINGE (SET)

Ausführung	nicht aushängbar	Model	Non-detachable
Beschreibung	für Flächenelemente und Aluminiumprofile	Description	To hinge panels or aluminum profiles
Set	1 Metallscharnier leicht, 3 Schrauben ISO 7380 - M5 × 8, 1 Schraube DIN 903 - M5 × 16, 1 Mutter DIN 934 - M5, 1 Scheibe DIN 125 Ø 5,3 - schwarz verzinkt (RoHS-konform)	Set	1 light metal hinge, 3 screws ISO 7380 - M5 × 8, 1 screw DIN 903 - M5 × 16, 1 nut - DIN 934 - M5, 1 washer DIN 125 Ø 5.3 - black zinc plated (RoHS compliant)
Material	Stahl	Material	Steel
Liefereinheit	10 Stück	Pack Quantity	10 pieces
Extras	weitere Oberflächen, weitere Farben auf Anfrage	Specials	Other surfaces, other colors on request



Metallscharnier Metal Hinge	F _{Amax} [N]	F _{Rmax} [N]	Gewicht [g] Weight [g]	Teil-Nr. Part #
	250	75	39.0	095990S



2