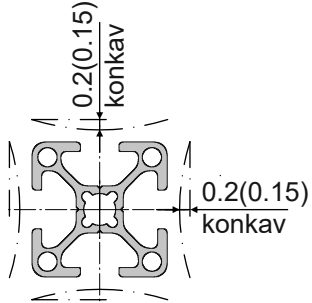


ALU-PROFILE PROFILES PROFILES



Konkavität



30x30



■ 2.15

30x30-1N



■ 2.15

30x30-2N90



■ 2.15

30x30-R



■ 2.15

30x45



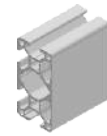
■ 2.15

30x60



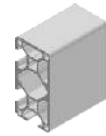
■ 2.16

30x60-2N



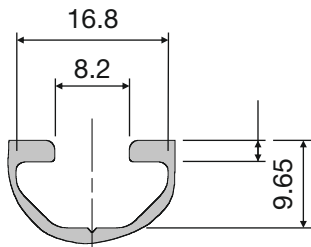
■ 2.16

30x60-3N90



■ 2.16

Nut



30x30KL



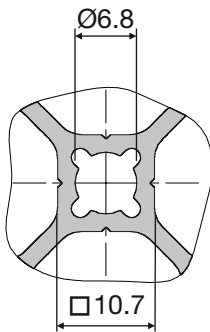
➔ ■ 2.17

30x30KL-180°

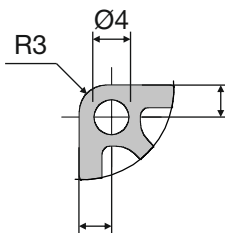


➔ ■ 2.17

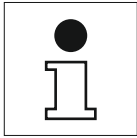
Kernloch



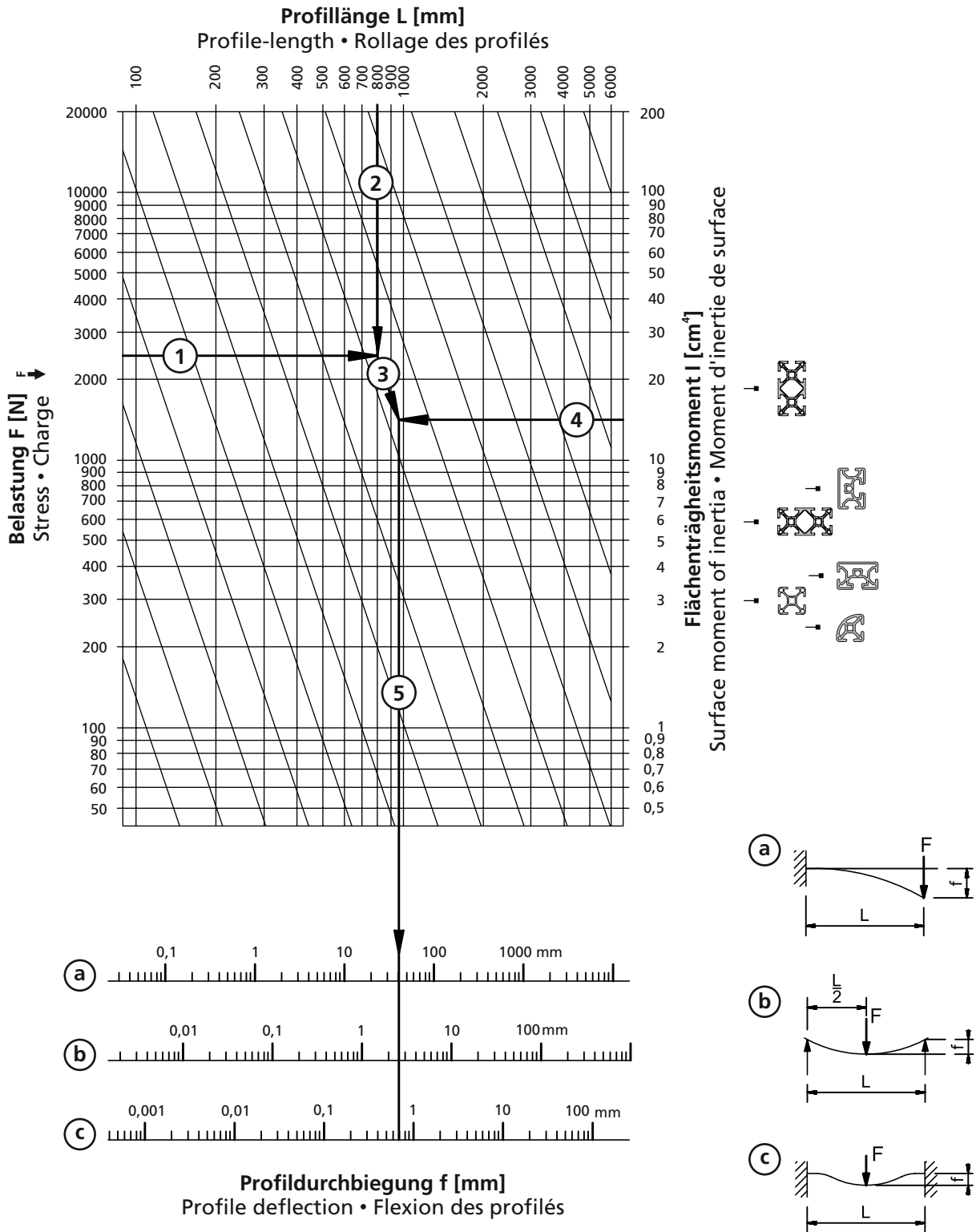
Außenkante



2



Durchbiegung der Profile
Profile deflection
Flexion des profilés

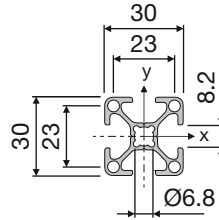
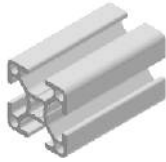


Technische Änderungen vorbehalten

ALU-PROFILE PROFILES PROFILES



30x30

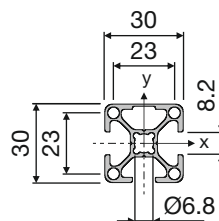


05.01025.00

M = 0,81 kg/m
 $I_x = 2,78 \text{ cm}^4$
 $W_x = 1,85 \text{ cm}^3$
 $I_y = 2,78 \text{ cm}^4$
 $W_y = 1,85 \text{ cm}^3$

PE (m)
 6 / 72 / 144

30x30-1N

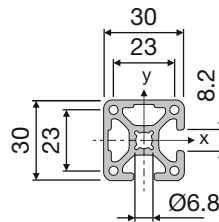
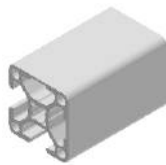


05.01915.00

M = 0,84 kg/m
 $I_x = 2,95 \text{ cm}^4$
 $W_x = 1,97 \text{ cm}^3$
 $I_y = 2,78 \text{ cm}^4$
 $W_y = 1,85 \text{ cm}^3$

PE (m)
 6 / 72 / 144

30x30-2N90

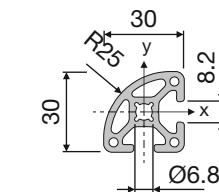


05.01916.00

M = 0,86 kg/m
 $I_x = 2,96 \text{ cm}^4$
 $W_x = 1,97 \text{ cm}^3$
 $I_y = 2,96 \text{ cm}^4$
 $W_y = 1,97 \text{ cm}^3$

PE (m)
 6 / 72 / 144

30x30-R

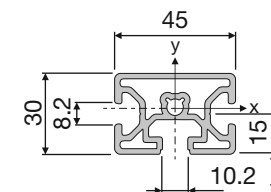
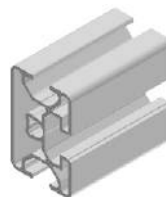


05.01925.00

M = 0,80 kg/m
 $I_x = 2,40 \text{ cm}^4$
 $W_x = 1,60 \text{ cm}^3$
 $I_y = 2,40 \text{ cm}^4$
 $W_y = 1,60 \text{ cm}^3$

PE (m)
 6 / 72 / 144

30x45



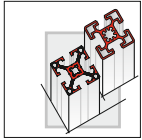
05.01923.00

M = 1,05 kg/m
 $I_x = 7,97 \text{ cm}^4$
 $W_x = 3,54 \text{ cm}^3$
 $I_y = 3,75 \text{ cm}^4$
 $W_y = 2,51 \text{ cm}^3$

PE (m)
 6 / 24 / 48 / 72

2

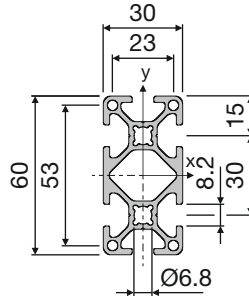
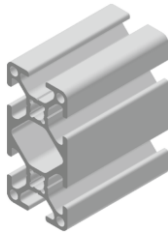
Technische Änderungen vorbehalten



ALU-PROFILE
PROFILES
PROFILES



30x60

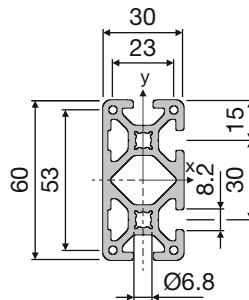
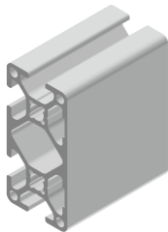


05.01924.00

M = 1,50 kg/m
 $I_x = 19,10 \text{ cm}^4$
 $W_x = 6,60 \text{ cm}^3$
 $I_y = 5,64 \text{ cm}^4$
 $W_y = 3,76 \text{ cm}^3$

PE (m)
 6 / 36 / 72 / 108

30x60-2N

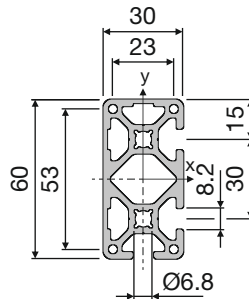
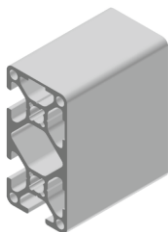


05.01933.00

M = 1,61 kg/m
 $I_x = 20,48 \text{ cm}^4$
 $W_x = 6,83 \text{ cm}^3$
 $I_y = 6,07 \text{ cm}^4$
 $W_y = 4,05 \text{ cm}^3$

PE (m)
 3

30x60-3N90



05.01928.00

M = 1,61 kg/m
 $I_x = 20,48 \text{ cm}^4$
 $W_x = 6,83 \text{ cm}^3$
 $I_y = 6,07 \text{ cm}^4$
 $W_y = 4,05 \text{ cm}^3$

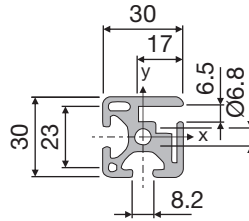
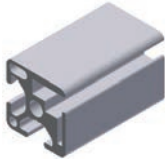
PE (m)
 6 / 36 / 72 / 108

Technische Änderungen vorbehalten

KLEMMPROFILE CLAMPING PROFILES PROFILE DE SERRAGE



30x30 KL



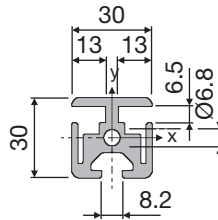
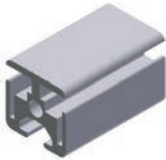
05.01919.00

M = 1,04 kg/m
I_x = 3,40 cm⁴
W_x = 2,27 cm³
I_y = 3,10 cm⁴
W_y = 2,07 cm³

PE (m)
6 / 72 / 144

Klemmleiste und Schrauben nicht im Lieferumfang enthalten
Clamping strips and screws are not included
Baguette et vis ne sont pas inclus

30x30 KL-180°



05.01921.00

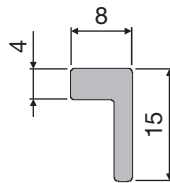
M = 1,16 kg/m
I_x = 3,61 cm⁴
W_x = 2,41 cm³
I_y = 3,45 cm⁴
W_y = 2,30 cm³

PE (m)
6 / 72 / 144

Klemmleiste und Schrauben nicht im Lieferumfang enthalten
Clamping strips and screws are not included
Baguette et vis ne sont pas inclus

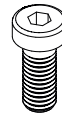
Klemmleiste

Clamping strips · Baguette

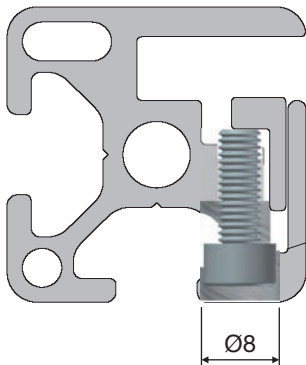


05.01922.00

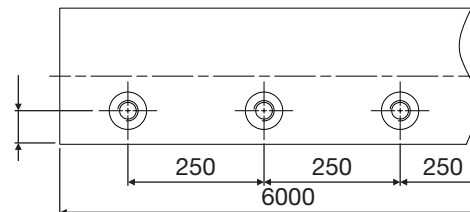
PE (m)
6



99.00095.00

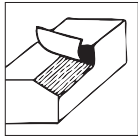


M4x12, DIN 7984
Bitte separat bestellen
Please order separately
Commander séparément



Bohrungen bereits im Profil vorhanden
Holes already provided in profiles
Profils déjà usinés

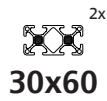
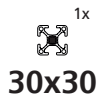
Technische Änderungen vorbehalten



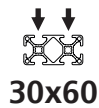
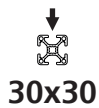
PROFILBEARBEITUNG

PROFILE FINISHING

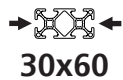
USINAGE DE PROFILES



		05.xxxxx.09
M8x30		05.xxxxx.10
M8x30		05.xxxxx.11



VSI 7		05.xxxxx.15 ■ 3.21	UNI		05.xxxxx.40 ■ 3.11
VSI 7		05.xxxxx.16	UNI		05.xxxxx.41
BV11		05.xxxxx.25 ■ 3.06	VSA 14		05.xxxxx.45 ■ 3.20
BV11		05.xxxxx.26	VSA 14		05.xxxxx.46
GV10.5		05.xxxxx.30 ■ 3.02			
GV10.5		05.xxxxx.31			

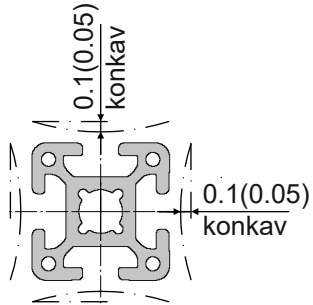


BV11V		05.xxxxx.85 ■ 3.06	UNI		05.xxxxx.43 ■ 3.11
BV11V		05.xxxxx.86	UNI		05.xxxxx.44

Technische Änderungen vorbehalten



Konkavität



30x30-10K



■ 2.21

30x60-10K



■ 2.21

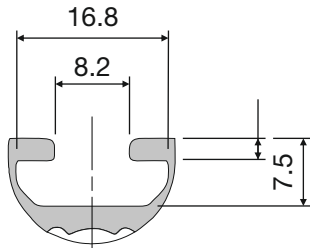
60x60-10K



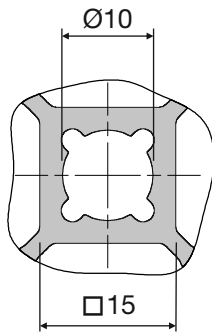
■ 2.21

2

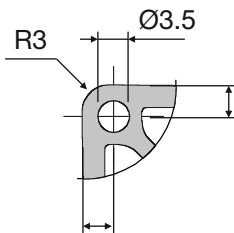
Nut

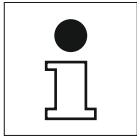


Kernloch

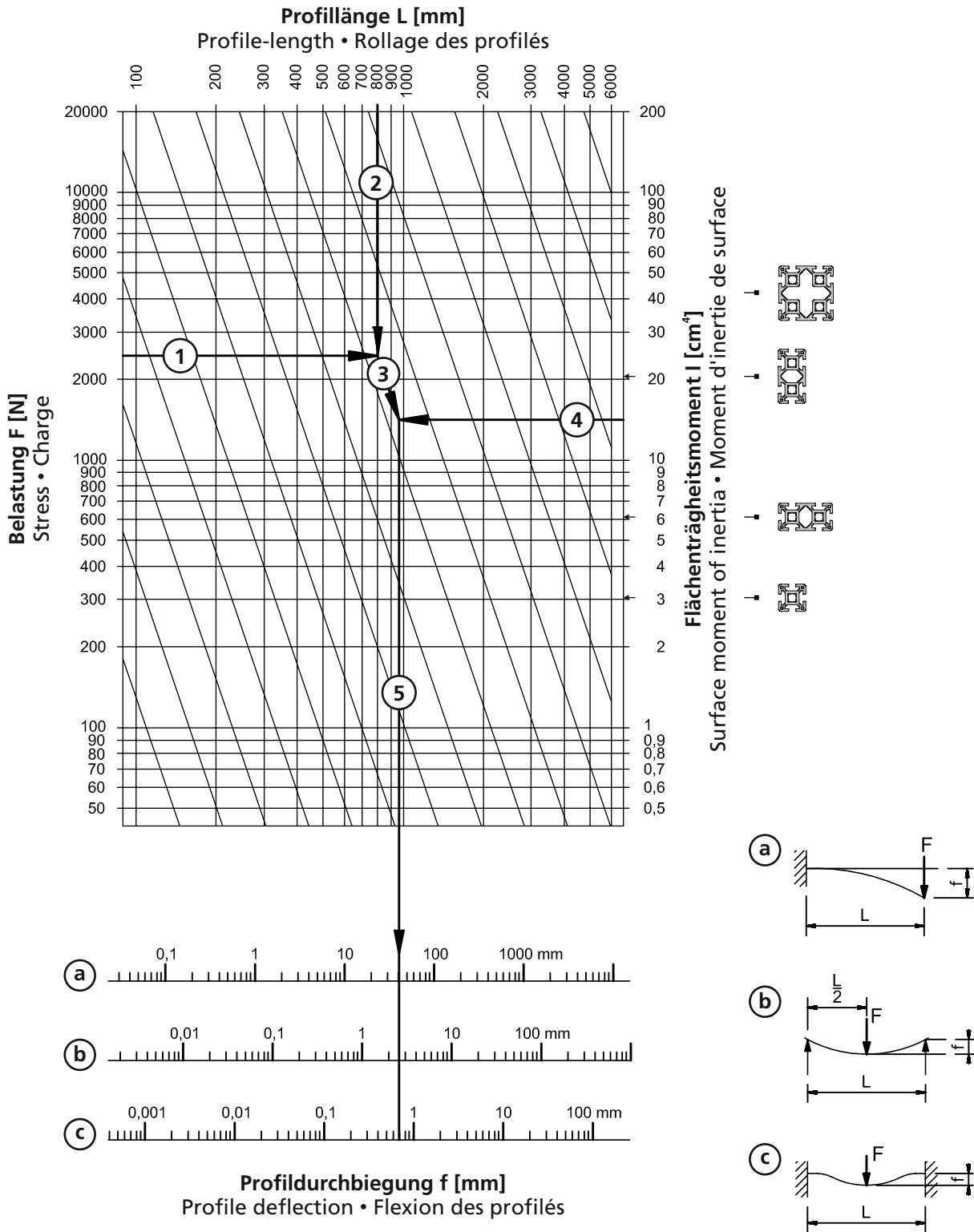


Außenkante





Durchbiegung der Profile
Profile deflection
Flexion des profilés

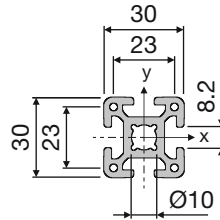


Technische Änderungen vorbehalten

ALU-PROFILE
PROFILES
PROFILES



30x30-10K

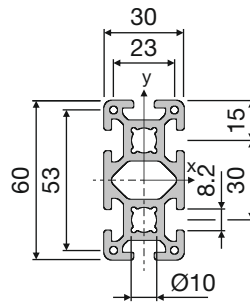


05.01926.00

M = 0,97 kg/m
 $I_x = 3,17 \text{ cm}^4$
 $W_x = 2,11 \text{ cm}^3$
 $I_y = 3,17 \text{ cm}^4$
 $W_y = 2,11 \text{ cm}^3$
 PE (m)
 6 / 72 / 144



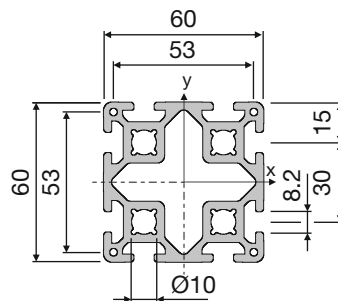
30x60-10K



05.01927.00

M = 1,81 kg/m
 $I_x = 22,55 \text{ cm}^4$
 $W_x = 7,52 \text{ cm}^3$
 $I_y = 6,33 \text{ cm}^4$
 $W_y = 4,22 \text{ cm}^3$
 PE (m)
 6 / 36 / 72 / 108

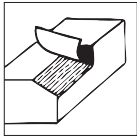
60x60-10K



05.01960.00




M = 3,00 kg/m
 $I_x = 42,67 \text{ cm}^4$
 $W_x = 14,22 \text{ cm}^3$
 $I_y = 42,67 \text{ cm}^4$
 $W_y = 14,22 \text{ cm}^3$
 PE (m)
 6 / 36 / 72 / 108


Technische Änderungen vorbehalten




PROFILBEARBEITUNG
PROFILE FINISHING
USINAGE DE PROFILES

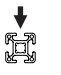
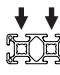





 **30x30-10K**
  **30x60-10K**
  **60x60-10K**



 **05.xxxxx.09**


M12x60  **05.xxxxx.10**


M12x60  **M12x60** **05.xxxxx.11**


 **30x30-10K**
  **30x60-10K**
  **60x60-10K**


VSI 7  **05.xxxxx.15** ■ 3.21
 VSA 14  **05.xxxxx.45** ■ 3.20

VSI 7  **VSI 7** **05.xxxxx.16**
 VSA 14  **VSA 14** **05.xxxxx.46**


BV11  **05.xxxxx.25** ■ 3.06


BV11  **BV11** **05.xxxxx.26**

GV  **05.xxxxx.30** ■ 3.02

GV  **GV** **05.xxxxx.31**


30x60-10K

BV11V  **05.xxxxx.85** ■ 3.06

BV11V  **BV11V** **05.xxxxx.86**

Technische Änderungen vorbehalten

