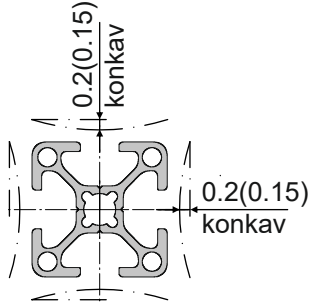


ALU-PROFILE PROFILES PROFILES



Konkavität



30x30



■ 2.15

30x30-1N



■ 2.15

30x30-2N90



■ 2.15

30x30-R



■ 2.15

30x45



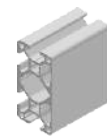
■ 2.15

30x60



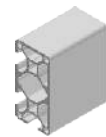
■ 2.16

30x60-2N



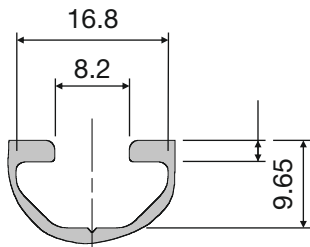
■ 2.16

30x60-3N90



■ 2.16

Nut



30x30KL



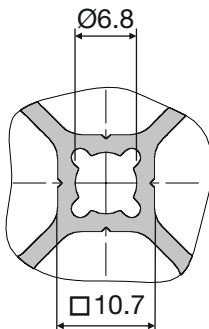
➔ ■ 2.17

30x30KL-180°

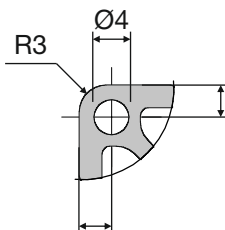


➔ ■ 2.17

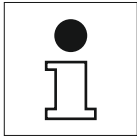
Kernloch



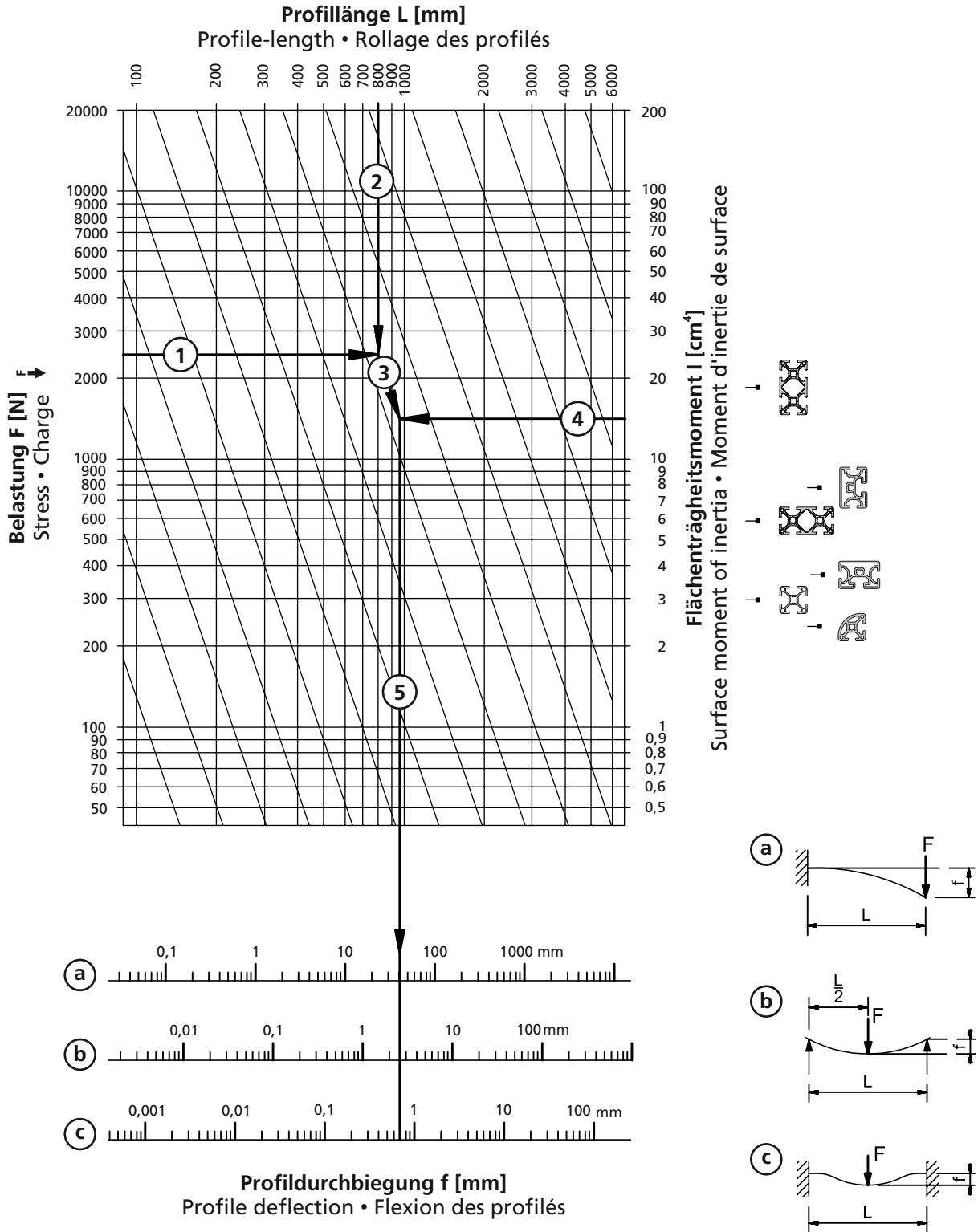
Außenkante



2



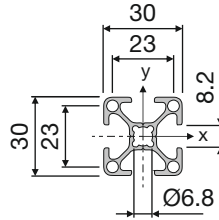
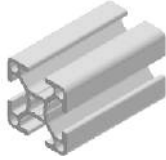
Durchbiegung der Profile
Profile deflection
Flexion des profilés



ALU-PROFILE
PROFILES
PROFILES



30x30

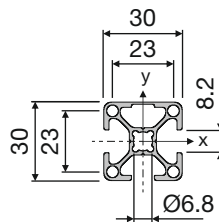


05.01025.00

M = 0,81 kg/m
 $I_x = 2,78 \text{ cm}^4$
 $W_x = 1,85 \text{ cm}^3$
 $I_y = 2,78 \text{ cm}^4$
 $W_y = 1,85 \text{ cm}^3$

PE (m)
 6 / 72 / 144

30x30-1N

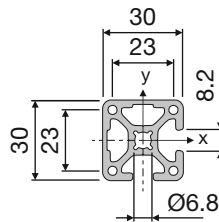
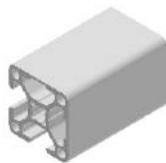


05.01915.00

M = 0,84 kg/m
 $I_x = 2,95 \text{ cm}^4$
 $W_x = 1,97 \text{ cm}^3$
 $I_y = 2,78 \text{ cm}^4$
 $W_y = 1,85 \text{ cm}^3$

PE (m)
 6 / 72 / 144

30x30-2N90

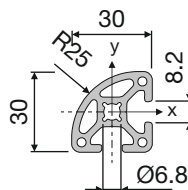


05.01916.00

M = 0,86 kg/m
 $I_x = 2,96 \text{ cm}^4$
 $W_x = 1,97 \text{ cm}^3$
 $I_y = 2,96 \text{ cm}^4$
 $W_y = 1,97 \text{ cm}^3$

PE (m)
 6 / 72 / 144

30x30-R

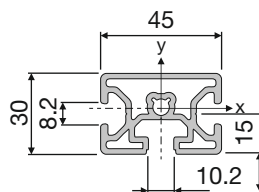
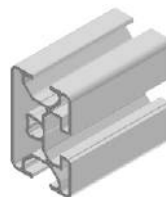


05.01925.00

M = 0,80 kg/m
 $I_x = 2,40 \text{ cm}^4$
 $W_x = 1,60 \text{ cm}^3$
 $I_y = 2,40 \text{ cm}^4$
 $W_y = 1,60 \text{ cm}^3$

PE (m)
 6 / 72 / 144

30x45



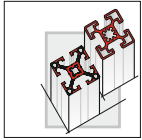
05.01923.00

M = 1,05 kg/m
 $I_x = 7,97 \text{ cm}^4$
 $W_x = 3,54 \text{ cm}^3$
 $I_y = 3,75 \text{ cm}^4$
 $W_y = 2,51 \text{ cm}^3$

PE (m)
 6 / 24 / 48 / 72

2

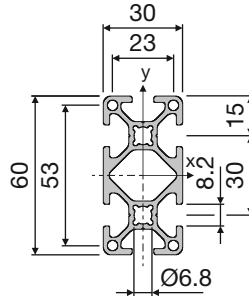
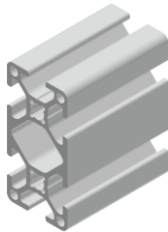
Technische Änderungen vorbehalten



ALU-PROFILE
PROFILES
PROFILES



30x60

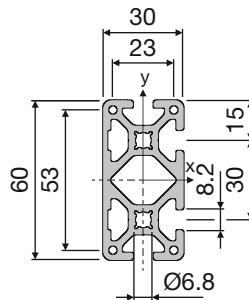
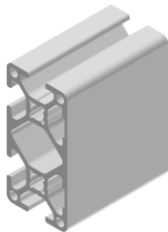


05.01924.00

M = 1,50 kg/m
 $I_x = 19,10 \text{ cm}^4$
 $W_x = 6,60 \text{ cm}^3$
 $I_y = 5,64 \text{ cm}^4$
 $W_y = 3,76 \text{ cm}^3$

PE (m)
 6 / 36 / 72 / 108

30x60-2N

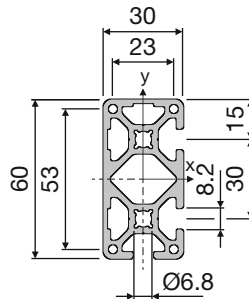
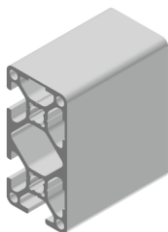


05.01933.00

M = 1,61 kg/m
 $I_x = 20,48 \text{ cm}^4$
 $W_x = 6,83 \text{ cm}^3$
 $I_y = 6,07 \text{ cm}^4$
 $W_y = 4,05 \text{ cm}^3$

PE (m)
 3

30x60-3N90



05.01928.00

M = 1,61 kg/m
 $I_x = 20,48 \text{ cm}^4$
 $W_x = 6,83 \text{ cm}^3$
 $I_y = 6,07 \text{ cm}^4$
 $W_y = 4,05 \text{ cm}^3$

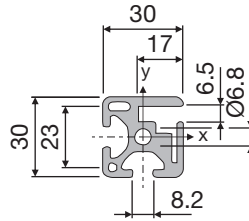
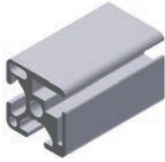
PE (m)
 6 / 36 / 72 / 108

Technische Änderungen vorbehalten

KLEMMPROFILE CLAMPING PROFILES PROFILE DE SERRAGE



30x30 KL



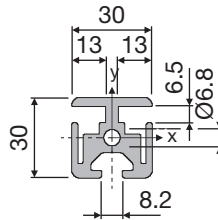
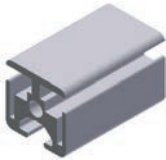
05.01919.00

M = 1,04 kg/m
I_x = 3,40 cm⁴
W_x = 2,27 cm³
I_y = 3,10 cm⁴
W_y = 2,07 cm³

PE (m)
6 / 72 / 144

Klemmleiste und Schrauben nicht im Lieferumfang enthalten
Clamping strips and screws are not included
Baguette et vis ne sont pas inclus

30x30 KL-180°



05.01921.00

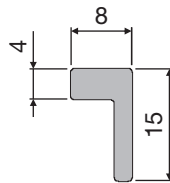
M = 1,16 kg/m
I_x = 3,61 cm⁴
W_x = 2,41 cm³
I_y = 3,45 cm⁴
W_y = 2,30 cm³

PE (m)
6 / 72 / 144

Klemmleiste und Schrauben nicht im Lieferumfang enthalten
Clamping strips and screws are not included
Baguette et vis ne sont pas inclus

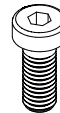
Klemmleiste

Clamping strips · Baguette

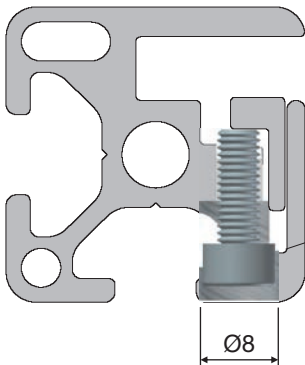


05.01922.00

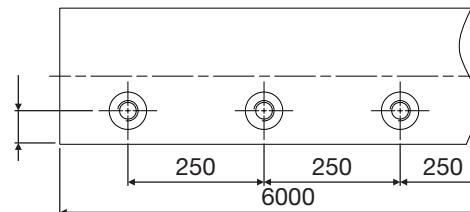
PE (m)
6



99.00095.00



M4x12, DIN 7984
Bitte separat bestellen
Please order separately
Commander séparément



Bohrungen bereits im Profil vorhanden
Holes already provided in profiles
Profils déjà usinés