

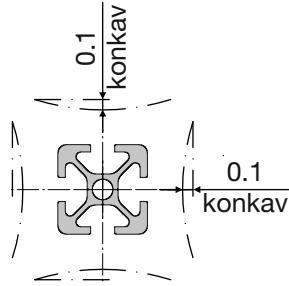
ALU-PROFILE

PROFILES

PROFILES



Konkavität



10x20

10x40



■ 2.09

■ 2.09

20x20

20x20-1N

20x20-2N90

20x20-R



■ 2.09

■ 2.09

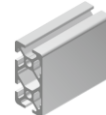
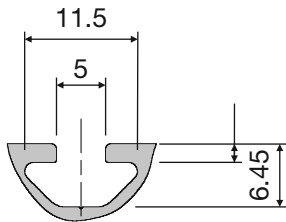
■ 2.10

■ 2.10

20x40

20x40-2N

20x40-3N90

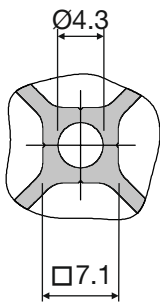


■ 2.10

■ 2.10

■ 2.11

Kernloch



20x60

20x80

40x40

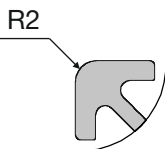


■ 2.11

■ 2.11

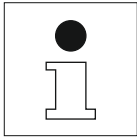
■ 2.11

Außenkante

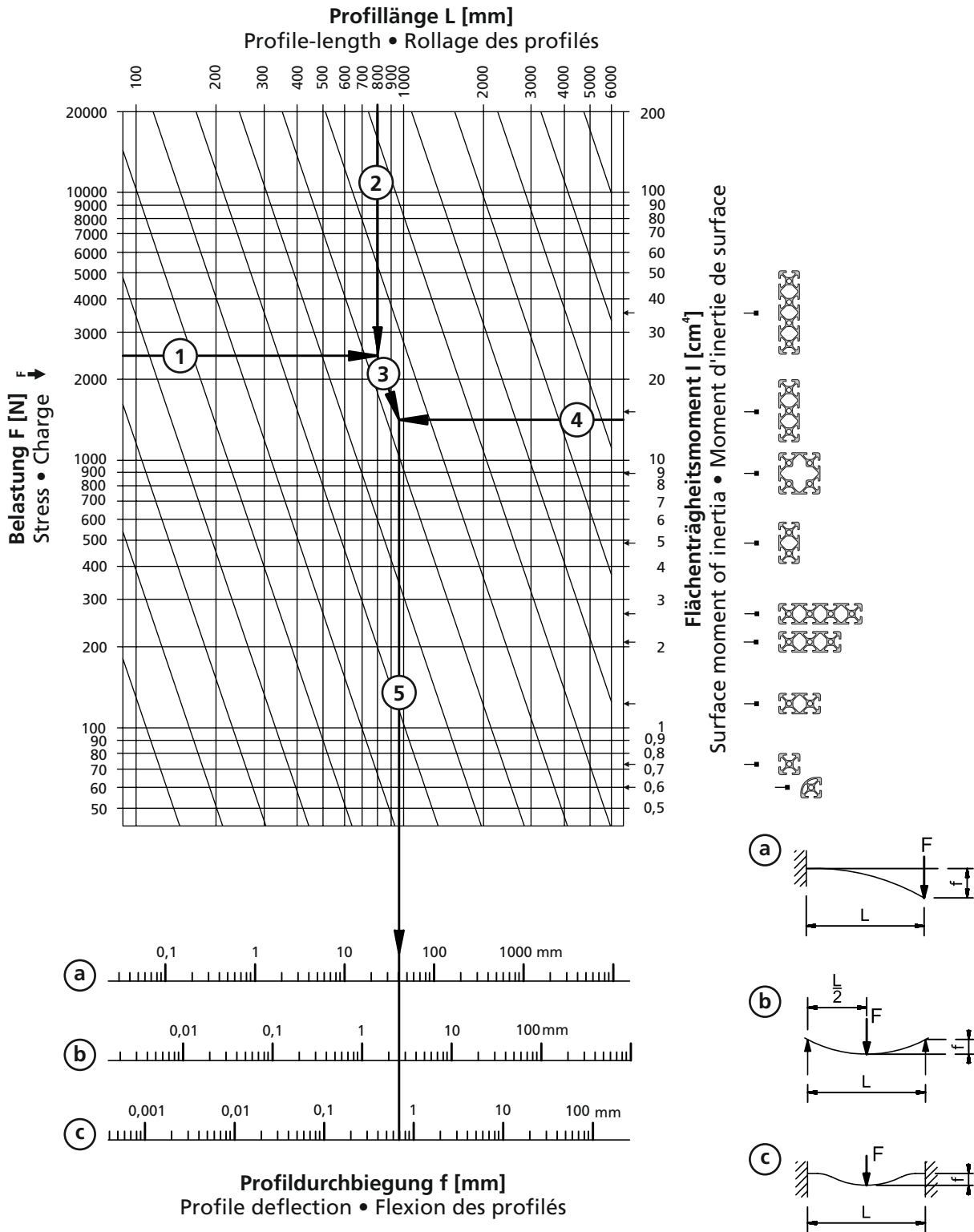


2

Technische Änderungen vorbehalten



Durchbiegung der Profile
Profile deflection
Flexion des profilés

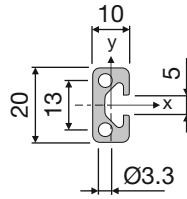


Technische Änderungen vorbehalten

ALU-PROFILE
PROFILES
PROFILES



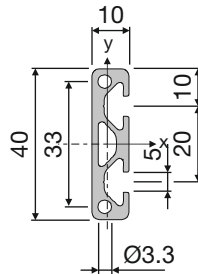
10x20



05.01602.00

M = 0,35 kg/m
 $I_x = 0,53 \text{ cm}^4$
 $W_x = 0,53 \text{ cm}^3$
 $I_y = 0,13 \text{ cm}^4$
 $W_y = 0,26 \text{ cm}^3$
 PE (m)
 6

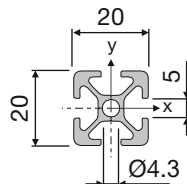
10x40



05.01603.00

M = 0,63 kg/m
 $I_x = 3,56 \text{ cm}^4$
 $W_x = 7,12 \text{ cm}^3$
 $I_y = 0,35 \text{ cm}^4$
 $W_y = 0,18 \text{ cm}^3$
 PE (m)
 6

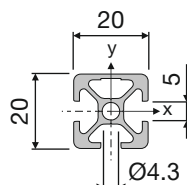
20x20



05.01605.00

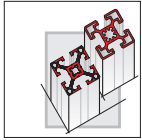
M = 0,48 kg/m
 $I_x = 0,74 \text{ cm}^4$
 $W_x = 0,74 \text{ cm}^3$
 $I_y = 0,74 \text{ cm}^4$
 $W_y = 0,74 \text{ cm}^3$
 PE (m)
 6 / 96 / 192

20x20-1N



05.01645.00

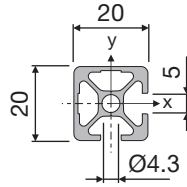
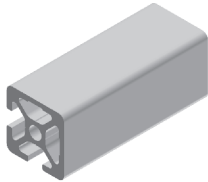
M = 0,50 kg/m
 $I_x = 0,74 \text{ cm}^4$
 $W_x = 0,74 \text{ cm}^3$
 $I_y = 0,80 \text{ cm}^4$
 $W_y = 0,80 \text{ cm}^3$
 PE (m)
 6 / 96 / 192



ALU-PROFILE
PROFILES
PROFILES



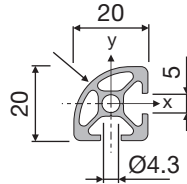
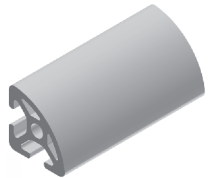
20x20-2N90



05.01646.00

M = 0,52 kg/m
 $I_x = 0,80 \text{ cm}^4$
 $W_x = 0,80 \text{ cm}^3$
 $I_y = 0,80 \text{ cm}^4$
 $W_y = 0,80 \text{ cm}^3$
 PE (m)
 6 / 96 / 192

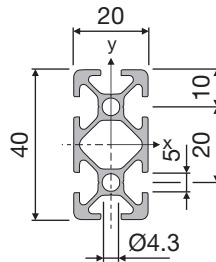
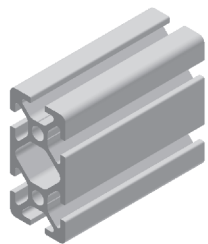
20x20-R



05.01024.00

M = 0,47 kg/m
 $I_x = 0,66 \text{ cm}^4$
 $W_x = 0,66 \text{ cm}^3$
 $I_y = 0,66 \text{ cm}^4$
 $W_y = 0,66 \text{ cm}^3$
 PE (m)
 6

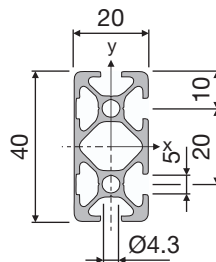
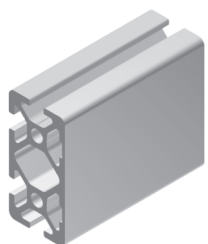
20x40



05.01606.00

M = 0,85 kg/m
 $I_x = 5,01 \text{ cm}^4$
 $W_x = 2,51 \text{ cm}^3$
 $I_y = 1,36 \text{ cm}^4$
 $W_y = 1,36 \text{ cm}^3$
 PE (m)
 6 / 96 / 192

20x40-2N



05.01658.00

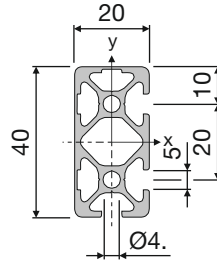
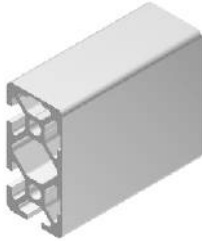
M = 0,89 kg/m
 $I_x = 5,27 \text{ cm}^4$
 $W_x = 2,64 \text{ cm}^3$
 $I_y = 1,44 \text{ cm}^4$
 $W_y = 1,44 \text{ cm}^3$
 PE (m)
 3

Technische Änderungen vorbehalten

ALU-PROFILE
PROFILES
PROFILES



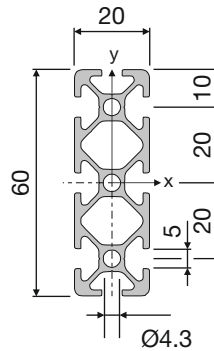
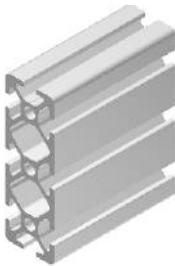
20x40-3N90



05.01659.00

M = 0,89 kg/m
 $I_x = 5,27 \text{ cm}^4$
 $W_x = 2,64 \text{ cm}^3$
 $I_y = 1,44 \text{ cm}^4$
 $W_y = 1,44 \text{ cm}^3$
 PE (m)
 6 / 96 / 192

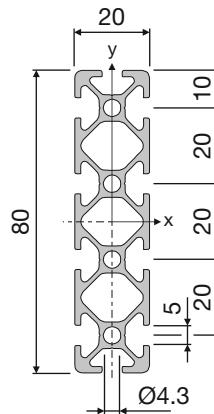
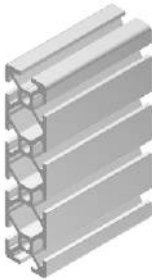
20x60



05.01663.00

M = 1,24 kg/m
 $I_x = 16,09 \text{ cm}^4$
 $W_x = 5,36 \text{ cm}^3$
 $I_y = 2,06 \text{ cm}^4$
 $W_y = 2,06 \text{ cm}^3$
 PE (m)
 6 / 24

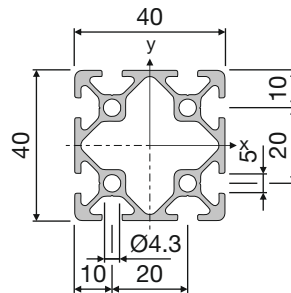
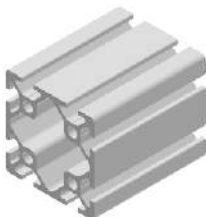
20x80



05.01664.00

M = 1,62 kg/m
 $I_x = 36,08 \text{ cm}^4$
 $W_x = 9,02 \text{ cm}^3$
 $I_y = 2,72 \text{ cm}^4$
 $W_y = 2,72 \text{ cm}^3$
 PE (m)
 6 / 24

40x40



05.01607.00

M = 1,33 kg/m
 $I_x = 8,92 \text{ cm}^4$
 $W_x = 4,46 \text{ cm}^3$
 $I_y = 8,92 \text{ cm}^4$
 $W_y = 4,46 \text{ cm}^3$
 PE (m)
 6

Technische Änderungen vorbehalten