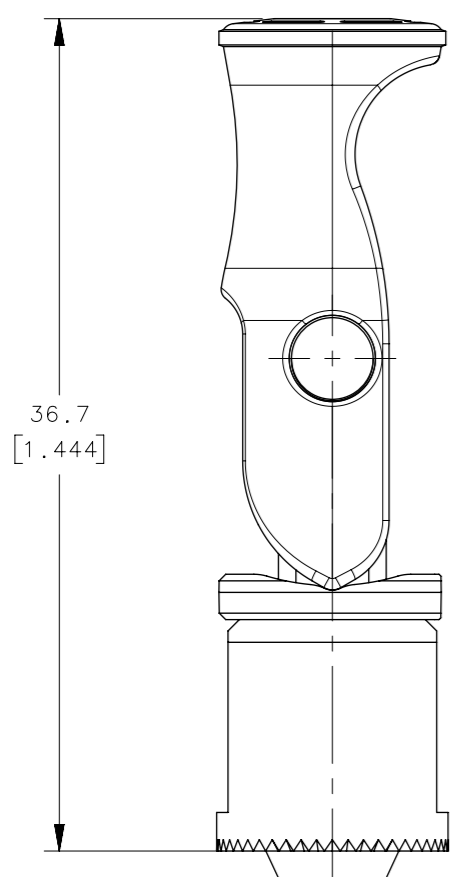
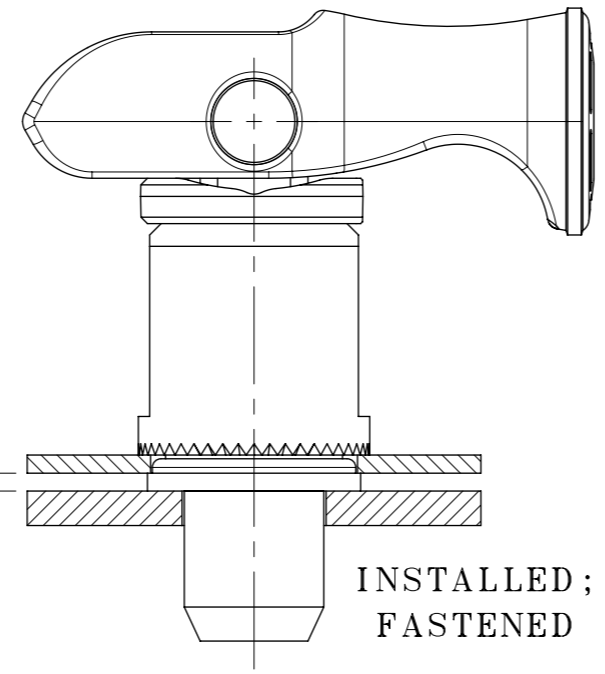


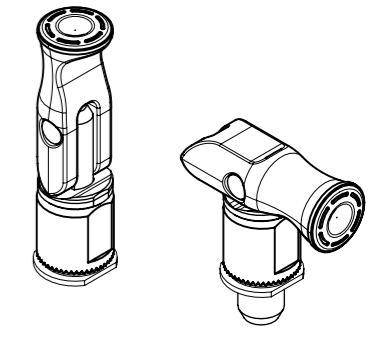
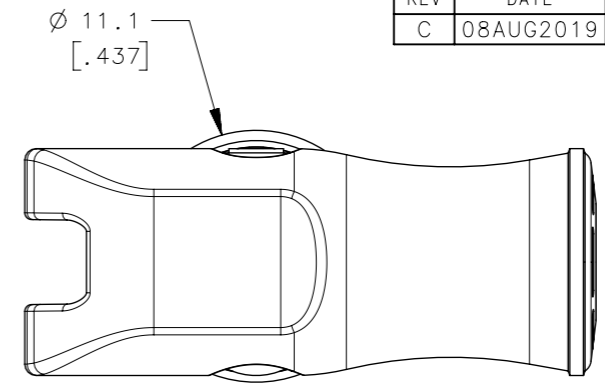
REVISION HISTORY			
REV	DATE	BY	DESCRIPTION
C	08AUG2019	KMB/RES	PRN: P2019-1038



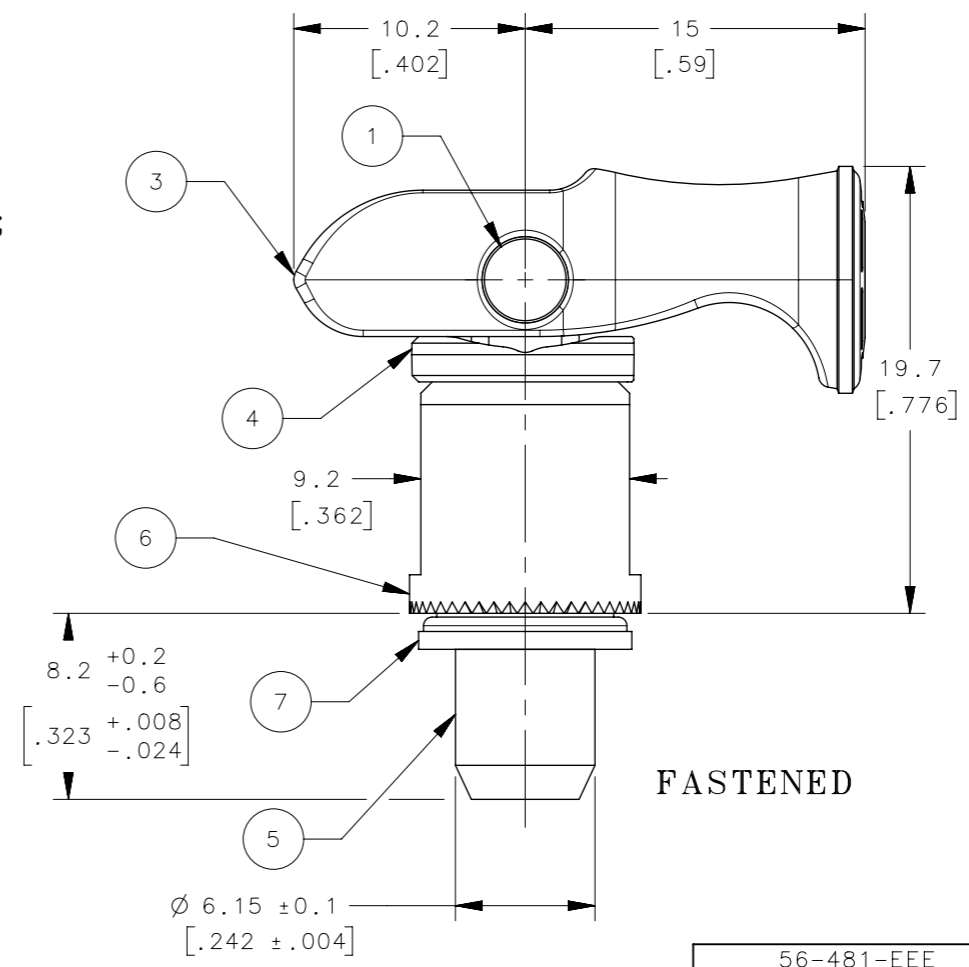
UNFASTENED



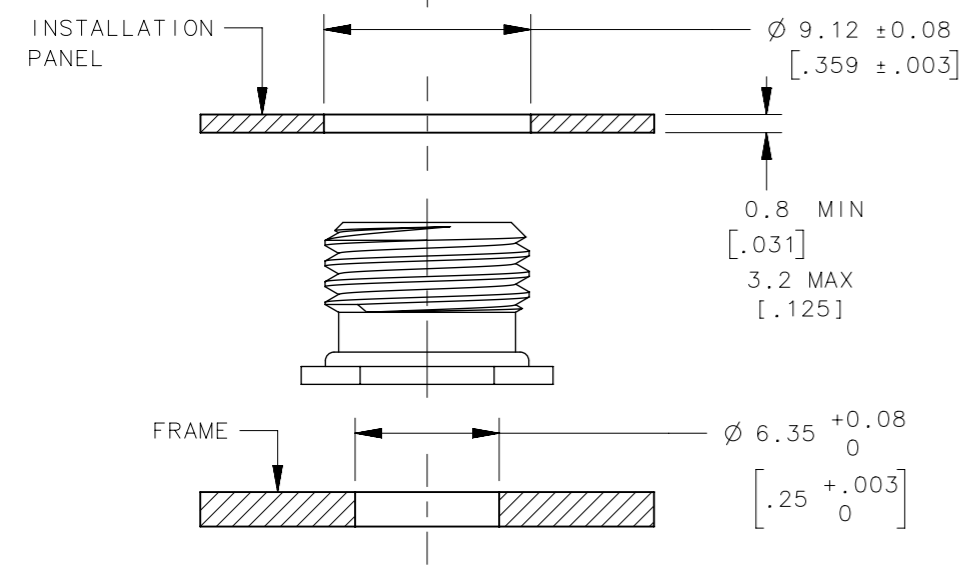
INSTALLED;  
FASTENED



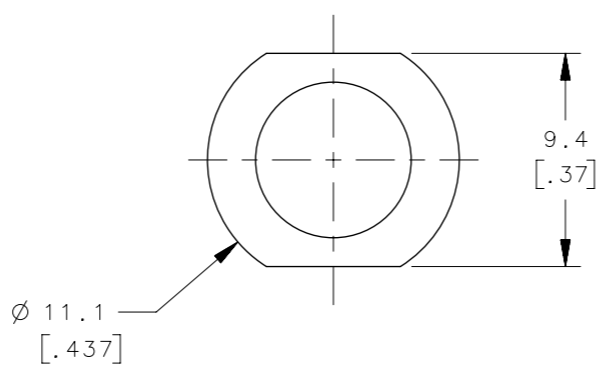
SCALE 1:1



FASTENED



- NOTES:
- A. SURFACES ABOVE PANEL TO MEET CLASS D REQUIREMENTS OF SOUTHCO COSMETIC SPECIFICATION S-121
  - B. EEE IN PART NUMBER DESIGNATES LEVER AND WASHER COLOR, SEE DRAWING J-47-0-3 FOR DETAILS  
EEE = 000 FOR BLACK
  - C. INSTALLATION:  
PREPARE HOLE IN PANEL  
PLACE PLUNGER IN HOLE  
PRESS FIRMLY TO HOLD TEETH OF FERRULE IN PANEL.  
INSTALL NUT IN FERRULE AND TIGHTEN WITH WRENCH SOUTHCO PART NUMBER 56-0-22041-04



56-481-EEE				
PART NUMBER				
7	1	SLEEVE NUT	STEEL	ZINC PLATE
6	1	FERRULE	STEEL	ZINC PLATE
5	1	STUD	STEEL	ZINC PLATE
4	1	WASHER	PC-ABS UL94 V0	SEE NOTE B
3	1	LEVER	NYLON 30% GF UL94 V0	SEE NOTE B
2	1	SPRING	STAINLESS STEEL	PASSIVATE
1	1	RIVET	STAINLESS STEEL	NATURAL
NO.	QTY	TYPE OF COMPONENT	MATERIAL	FINISH

CPB NUMBER 2018-0595	THIRD ANGLE PROJECTION
	MILLIMETERS [IN]
	TOLERANCES UNLESS OTHERWISE NOTED
	ALL DIMENSIONS WITHOUT TOLERANCES ARE FOR REFERENCE ONLY.
PROPRIETARY ITEM EXCEPT FOR USES EXPRESSLY GRANTED IN WRITING, INFORMATION DISCLOSED HEREON IS CONFIDENTIAL AND ALL RIGHTS, PATENT AND OTHERWISE, ARE RESERVED BY SOUTHCO, INC.	PER ASME Y14.5M-1994

**southco**<sup>®</sup>  
CONNECT • CREATE • INNOVATE

DESCRIPTION  
QUICK ACCESS FASTENER  
LEVER OPERATED PUNGER, INTERNAL NUT

SIZE A3	SYSTEM NX	DWG NO. J-56-481
DRAWN BY RES	DATE 18OCT2018	SCALE 3:1
		SHEET 1 OF 1