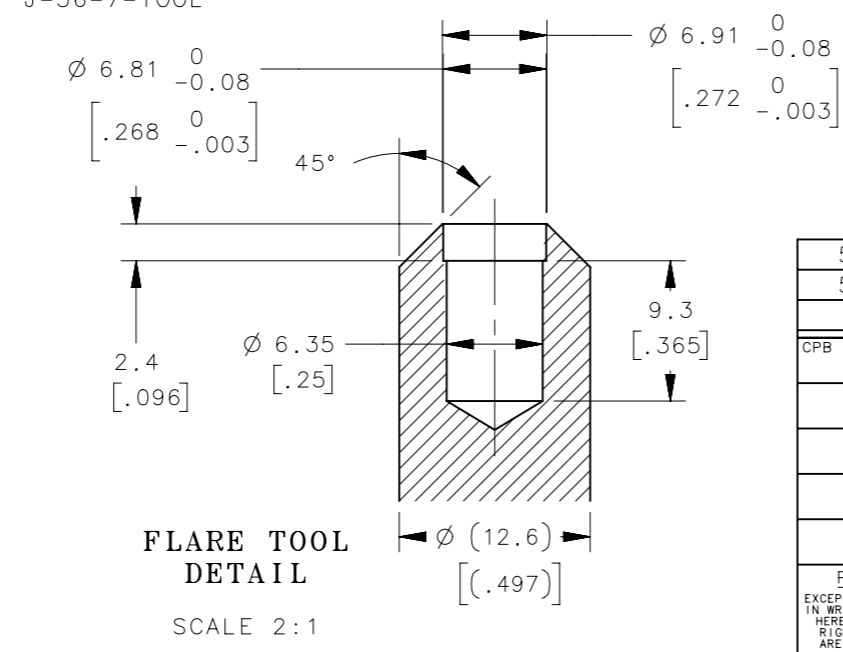
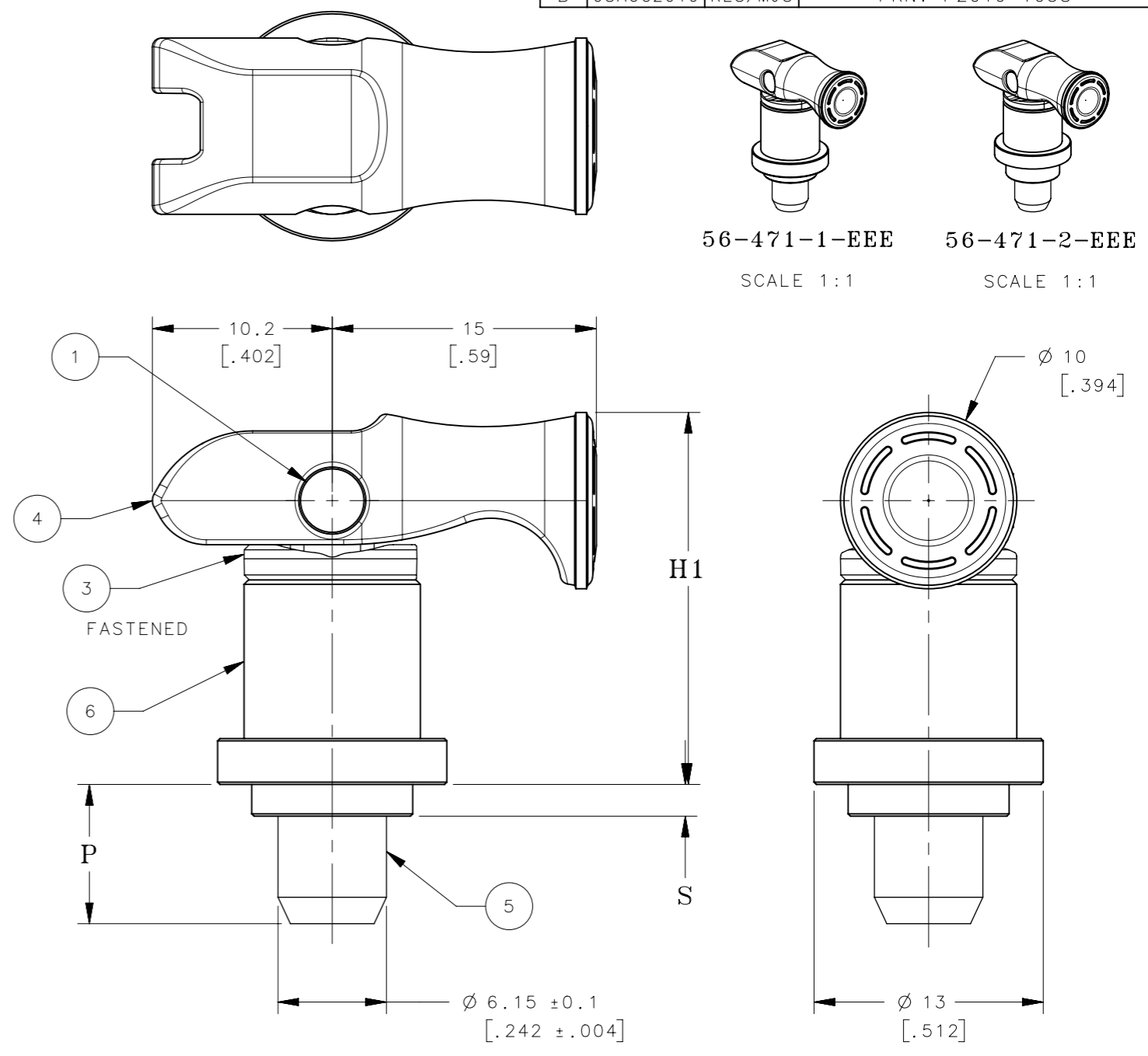
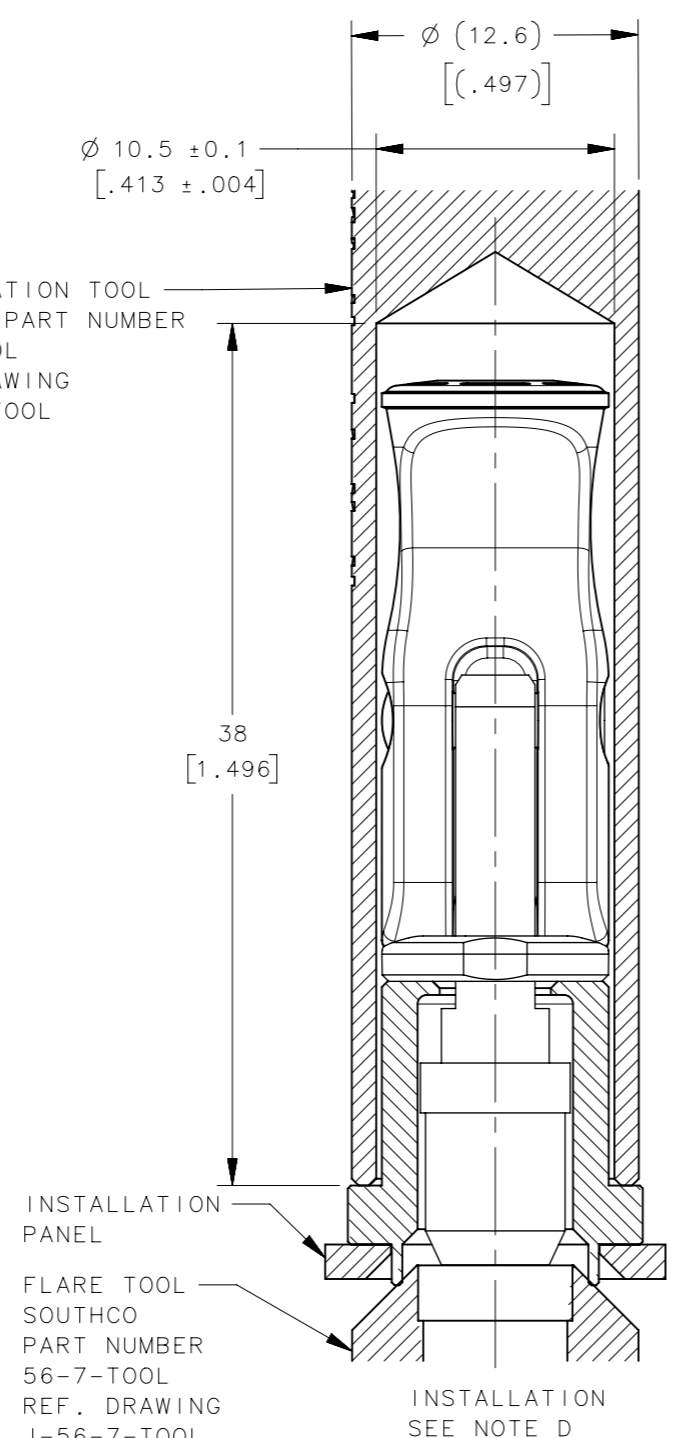
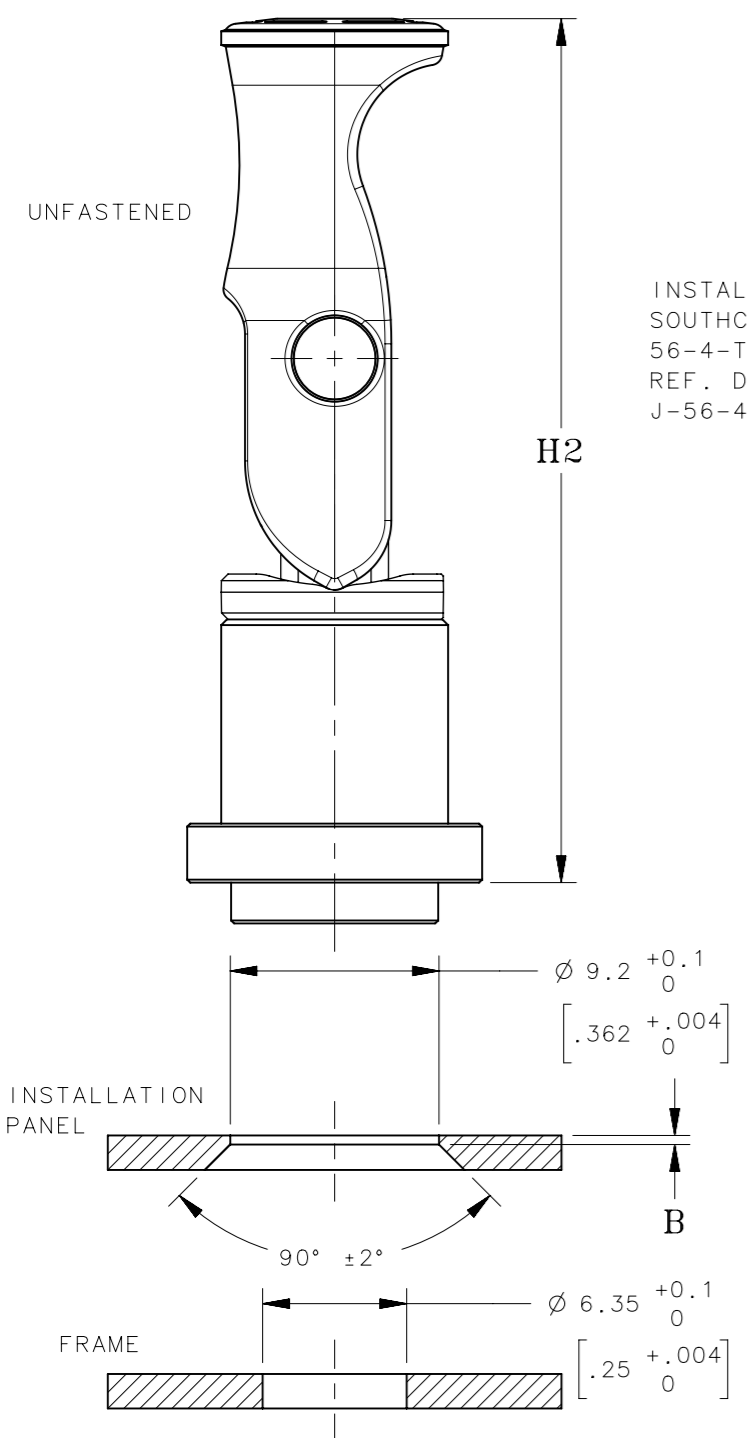


REVISION HISTORY			
REV	DATE	BY	DESCRIPTION
B	08AUG2019	RES/MJS	PRN: P2019-1038



- NOTES:
- A. SURFACES ABOVE PANEL TO MEET CLASS D REQUIREMENTS OF SOUTHCO COSMETIC SPECIFICATION S-121
 - B. EEE IN PART NUMBER DESIGNATES LEVER AND WASHER COLOR, SEE DRAWING J-47-0-3 FOR DETAILS
EEE = 000 FOR BLACK
 - C. L IN PART NUMBER DESIGNATES PANEL THICKNESS/FLARE SKIRT LENGTH
 - D. INSTALLATION:
PREPARE HOLE IN PANEL
PLACE PLUNGER
(IN OPEN ORIENTATION) IN HOLE
UNTIL COLLAR IS FIRMLY AGAINST PANEL
BACK UP COLLAR WITH INSTALLATION TOOL
USING FLARE TOOL FLARE FERRULE INTO PANEL

NO.	QTY	TYPE OF COMPONENT	MATERIAL	FINISH
6	1	FERRULE	STEEL	ZINC PLATE
5	1	STUD	STEEL	ZINC PLATE
4	1	LEVER	NYLON 30% GF UL94 V0	SEE NOTE B
3	1	WASHER	PC-ABS UL94 V0	SEE NOTE B
2	1	SPRING	STAINLESS STEEL	PASSIVATE
1	1	RIVET	STAINLESS STEEL	NATURAL

56-471-2-EEE	56-471-1-EEE	MIN PANEL	MAX PANEL	B ± 0.13 (± 0.005)	S	P ± 0.4 (± 0.016)	H1	H2
3.18 (.125)	4.7 (.185)	1.9 (.076)	3.3 (.130)	9.5 (.37)	19.6 (.77)	36.6 (.90)		
1.52 (.060)	3.18 (.125)	0.4 (.016)	1.8 (.070)	8 (.31)	21.1 (.83)	38.1 (1.5)		

CPB NUMBER 2018-0595

THIRD ANGLE PROJECTION

MILLIMETERS [IN]

TOLERANCES UNLESS OTHERWISE NOTED

ALL DIMENSIONS WITHOUT TOLERANCES ARE FOR REFERENCE ONLY.

PROPRIETARY ITEM
EXCEPT FOR USES EXPRESSLY GRANTED IN WRITING, INFORMATION DISCLOSED HEREON IS CONFIDENTIAL AND ALL RIGHTS, PATENT AND OTHERWISE, ARE RESERVED BY SOUTHCO, INC.

PER ASME Y14.5M-1994

DESCRIPTION: QUICK ACCESS FASTENER LEVER OPERATED PLUNGER, FLARE-IN

SIZE A3 SYSTEM NX DWG NO. J-56-471

DRAWN BY RES DATE 19OCT2018 SCALE 3:1 SHEET 1 OF 1

southco
CONNECT • CREATE • INNOVATE