

Prodlužovací prvky

Popis zboží/obrázky produktu



Popis

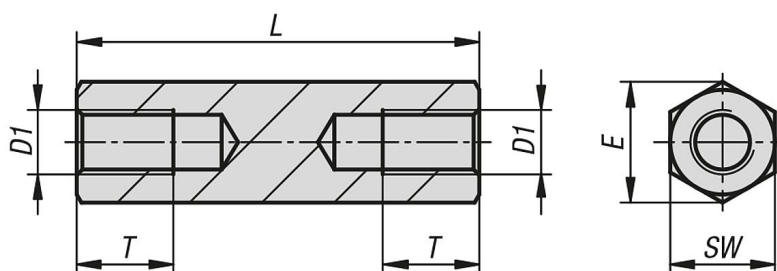
Materiál:

Automatová ocel 1.0718.

Provedení:

Pozinkováno, modře pasivováno.

Výkresy



Přehled zboží

Prodlužovací prvky

| Objednací číslo | D1 | E | L | SW | T |
|-----------------|-----|------|-----|----|----|
| K1302.205025 | M5 | 9,2 | 25 | 8 | 8 |
| K1302.205030 | M5 | 9,2 | 30 | 8 | 8 |
| K1302.205035 | M5 | 9,2 | 35 | 8 | 8 |
| K1302.206030 | M6 | 11,5 | 30 | 10 | 9 |
| K1302.206035 | M6 | 11,5 | 35 | 10 | 9 |
| K1302.206040 | M6 | 11,5 | 40 | 10 | 9 |
| K1302.206050 | M6 | 11,5 | 50 | 10 | 9 |
| K1302.206060 | M6 | 11,5 | 60 | 10 | 9 |
| K1302.208030 | M8 | 15 | 30 | 13 | 12 |
| K1302.208035 | M8 | 15 | 35 | 13 | 12 |
| K1302.208040 | M8 | 15 | 40 | 13 | 12 |
| K1302.208050 | M8 | 15 | 50 | 13 | 12 |
| K1302.208060 | M8 | 15 | 60 | 13 | 12 |
| K1302.208090 | M8 | 15 | 90 | 13 | 12 |
| K1302.210040 | M10 | 18,5 | 40 | 16 | 15 |
| K1302.210045 | M10 | 18,5 | 45 | 16 | 15 |
| K1302.210055 | M10 | 18,5 | 55 | 16 | 15 |
| K1302.210065 | M10 | 18,5 | 65 | 16 | 15 |
| K1302.210095 | M10 | 18,5 | 95 | 16 | 15 |
| K1302.210115 | M10 | 18,5 | 115 | 16 | 15 |
| K1302.212040 | M12 | 20,8 | 40 | 18 | 18 |
| K1302.212045 | M12 | 20,8 | 45 | 18 | 18 |
| K1302.212055 | M12 | 20,8 | 55 | 18 | 18 |
| K1302.212065 | M12 | 20,8 | 65 | 18 | 18 |
| K1302.212095 | M12 | 20,8 | 95 | 18 | 18 |
| K1302.212115 | M12 | 20,8 | 115 | 18 | 18 |