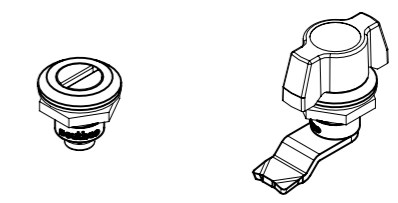


REVISION HISTORY			
REV	DATE	BY	DESCRIPTION
C	15FEB2019	CAB/EI	PRN: P2019-0408

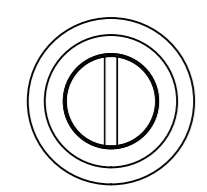
E5-M-H F - YY 1

- | | | |
|---------------------|-------------------------|----------------|
| H HEAD STYLE | F FINISH | YY GRIP |
| 00 - SLOTTED | 2 - BRIGHT CHROME PLATE | SEE GRIP TABLE |
| 14 - SQUARE 6mm | 5 - BLACK POWDER COATED | |
| 17 - TRIANGLE 6mm | | |
| 18 - HEX RECESS 6mm | | |
| 30 - WING KNOB | | |

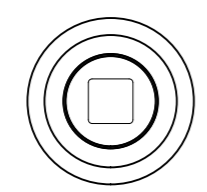


SCALE 1:2

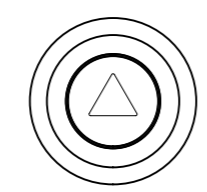
HEAD STYLE **H**



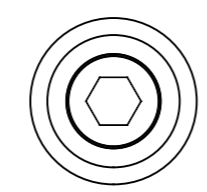
SLOTTED
H=00



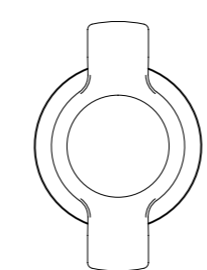
SQUARE 6mm
H=14



TRIANGLE 6mm
H=17



HEX RECESS 6mm
H=18



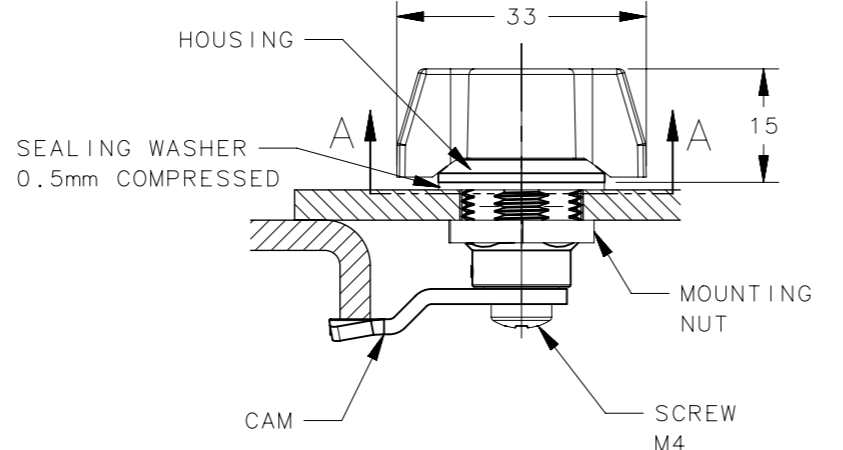
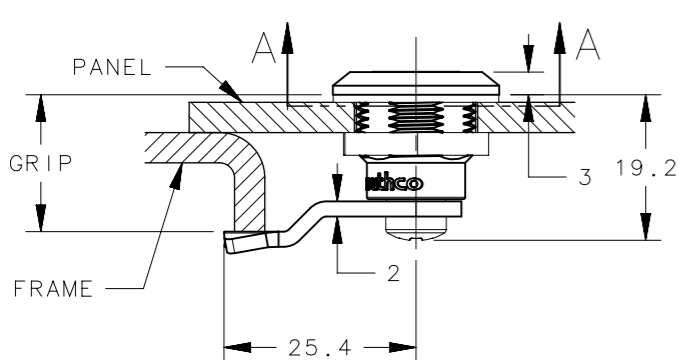
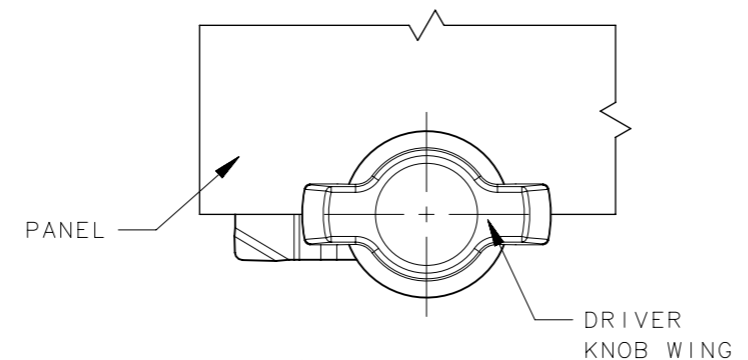
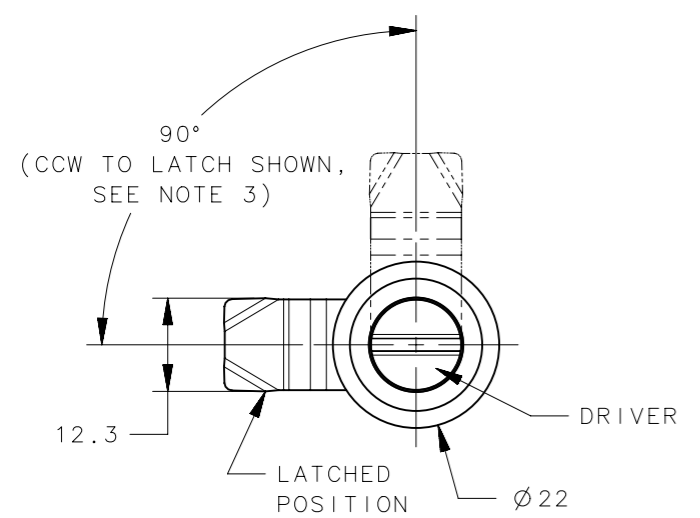
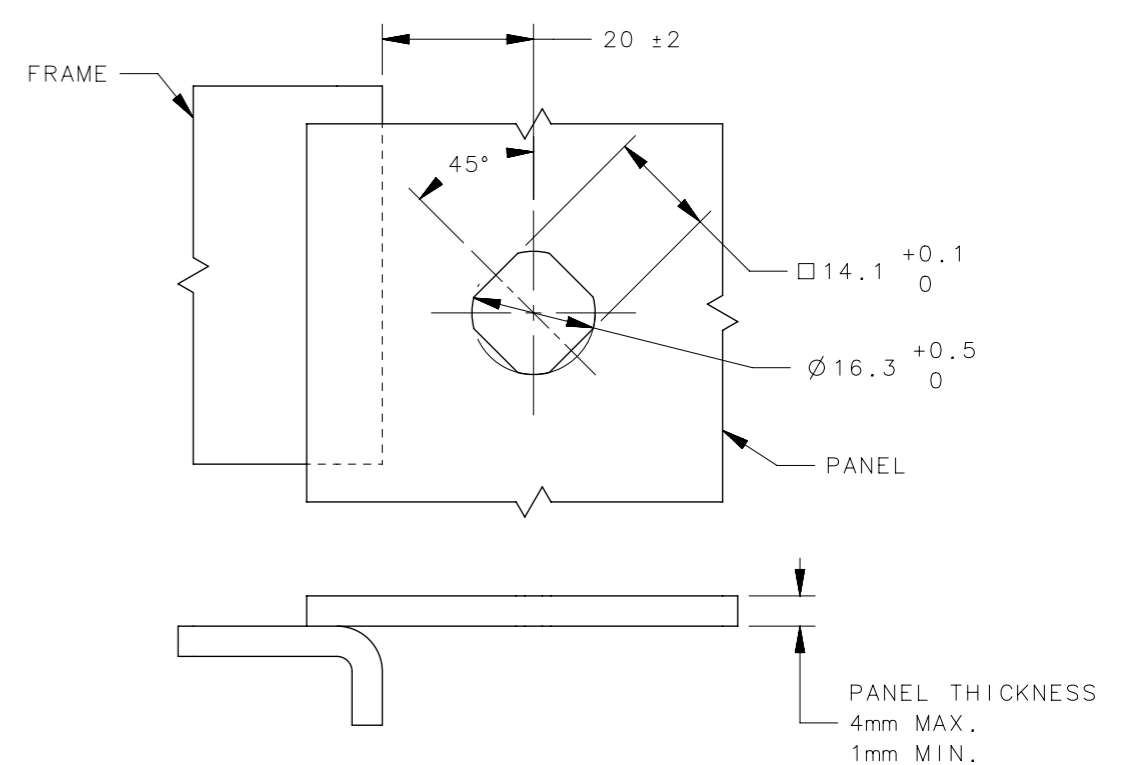
WING KNOB
H=30

USE CAM E5-30 **YY**

		YY GRIP TABLE													
GRIP (mm)	-	4	6	8	10	12	14	16	18	20	22	24	26		
YY	UU	05	06	07	08	09	10	11	12	13	14	15	16		

UU - CAM NOT SUPPLIED, ORDER SEPARATELY

PANEL PREPARATION



NOTES:

- MATERIAL AND FINISH:
HOUSING/DRIVER: DIE CASTING ZINC, BLACK POWDER COATED OR CHROME PLATED;
MOUNTING NUT: DIE CASTING ZINC, ZINC PLATED;
SEALING WASHER/O-RING: NITRILE, BLACK
- COSMETIC SPECIFICATION:
ALL SURFACES ABOVE A-A CONFORM TO CLASS "B" PER SOUTHCO COSMETIC SPECIFICATIONS S-121.
- LATCH CAN BE INSTALLED FOR COUNTER-CLOCKWISE (CCW) OR CLOCKWISE (CW) OPERATION.
- FOR CAM SEE J-E5-30-A AND J-E5-30-B.
- PACKAGING: LATCH, HARDWARE AND SEALING WASHER IS PACKED SEPARATELY, SHIPPED TOGETHER IN BOX. WHEN ORDERING, SPECIFY QUANTITY IN MULTIPLES OF 50 PCS.

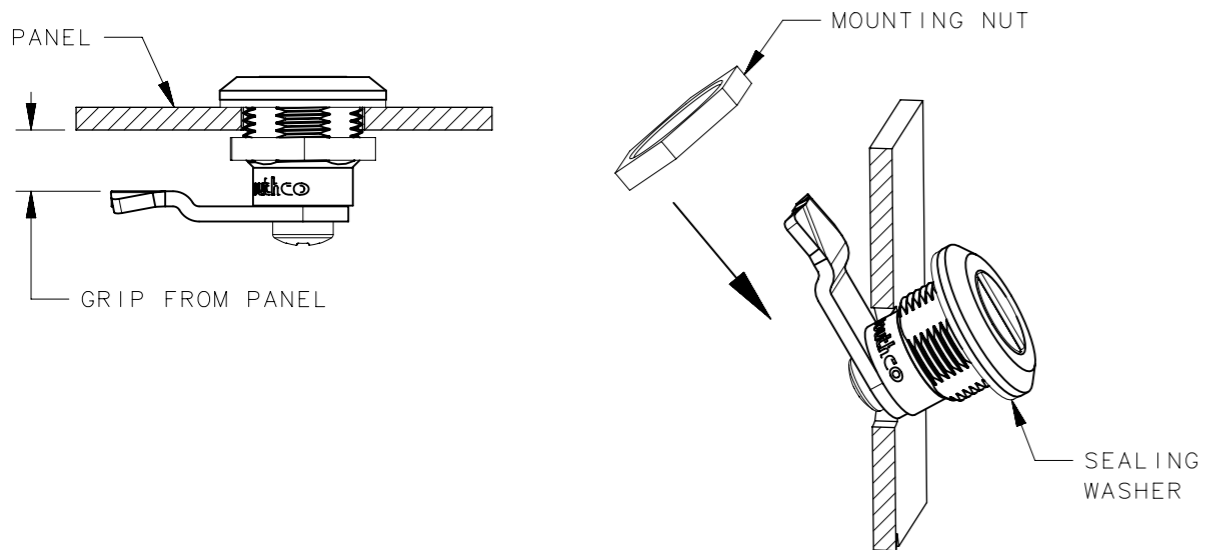
	THIRD ANGLE PROJECTION		
	MILLIMETERS [IN]		
SURFACE AREA	TOLERANCES UNLESS OTHERWISE NOTED	DESCRIPTION CAM LATCH	
VOLUME	ALL DIMENSIONS WITHOUT TOLERANCES ARE FOR REFERENCE ONLY.	SIZE A3	SYSTEM NX
PROPRIETARY ITEM EXCEPT FOR USES EXPRESSLY GRANTED IN WRITING, INFORMATION DISCLOSED HEREON IS CONFIDENTIAL AND ALL RIGHTS, PATENT AND OTHERWISE, ARE RESERVED BY SOUTHCO, INC.	PER ASME Y14.5M-1994	DWG NO. J-E5-M	
		DRAWN BY RM/EC	DATE 26APR2018
		SCALE 1:1	SHEET 1 OF 2

REVISION HISTORY			
REV	DATE	BY	DESCRIPTION
C	15FEB2019	CAB/EI	PRN: P2019-0408

INSTALLATION METHOD 1

ONLY APPLIED WHEN LATCH ASSEMBLY IS SUPPLIED WITH CAM.

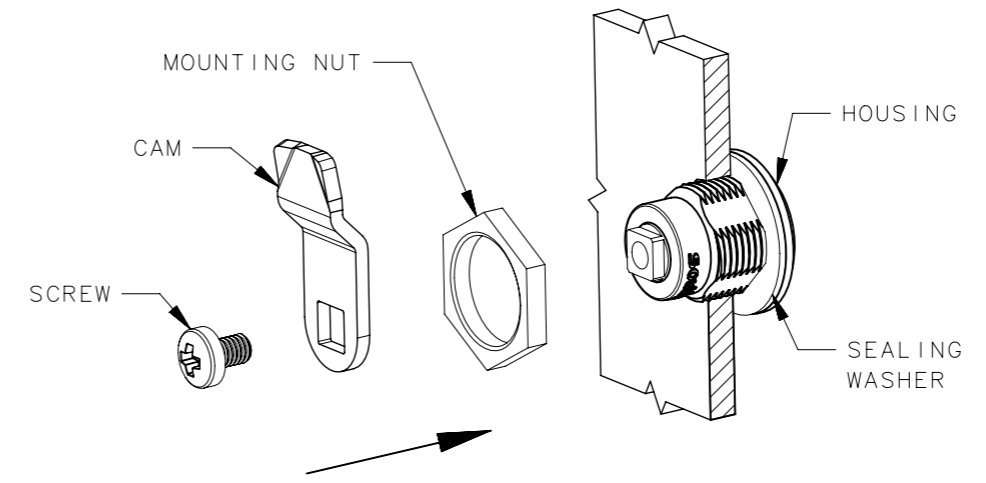
USE WHEN GRIP FROM PANEL IS EQUAL TO OR EXCEEDS BY 8mm.



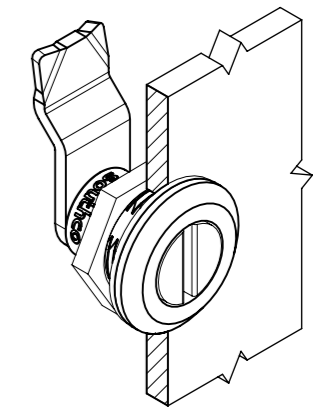
1. PLACE SEALING WASHER ONTO LATCH HOUSING
2. CHECK FOR PROPER ORIENTATION AND OPERATION USING CAM.
3. TILT LATCH THROUGH MOUNTING HOLE.
4. INSTALL MOUNTING NUT AND TIGHTEN TO 5Nm MAX.

INSTALLATION METHOD 2

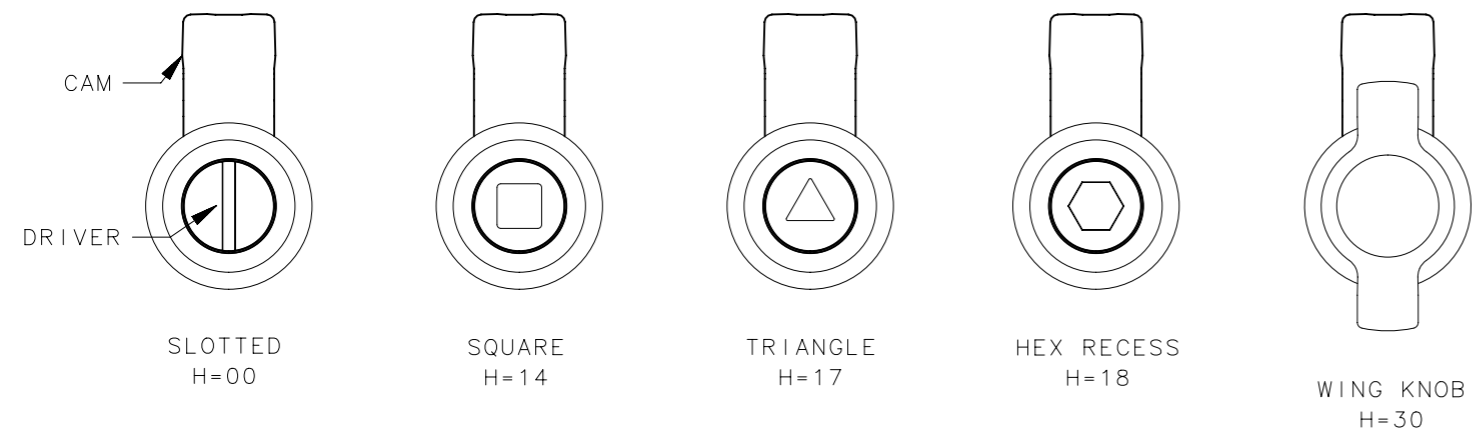
APPLIED WHEN:
 - LATCH ASSEMBLY IS SUPPLIED WITHOUT CAM. CAM IS ORDERED SEPARATELY.
 - LATCH ASSEMBLY SUPPLIED WITH CAM. REQUIRED WHEN GRIP FROM PANEL DOOR DOES NOT EXCEED BY 8mm.



1. REMOVE SCREW AND CAM (IF ORDERED) FROM HOUSING.
2. PLACE SEALING WASHER ONTO LATCH HOUSING AND PLACE THROUGH MOUNTING HOLE.
3. CHECK FOR PROPER ORIENTATION AND OPERATION USING CAM.
4. INSTALL MOUNTING NUT AND TIGHTEN TO 5Nm MAX.
5. ATTACH CAM TO LATCH ASSEMBLY. ASSURE THAT CAM FOLLOW THE ALIGNMENT ACCORDING TO THE POSITION OF DRIVER HEAD.
6. INSTALL SCREW AND TIGHTEN TO 1Nm MAX.



ALIGNMENT OF THE CAM ACCORDING TO DRIVER HEAD



THIRD ANGLE PROJECTION		southco [®] CONNECT • CREATE • INNOVATE	
MILLIMETERS [IN]			
TOLERANCES UNLESS OTHERWISE NOTED		DESCRIPTION CAM LATCH	
ALL DIMENSIONS WITHOUT TOLERANCES ARE FOR REFERENCE ONLY.		SIZE A3	SYSTEM NX
PER ASME Y14.5M-1994		DWG NO. J-E5-M	DATE 26APR2018
DRAWN BY RM/EC		SCALE 1:1	SHEET 2 OF 2

PROPRIETARY ITEM
 EXCEPT FOR USES EXPRESSLY GRANTED IN WRITING, INFORMATION DISCLOSED HEREON IS CONFIDENTIAL AND ALL RIGHTS, PATENT AND OTHERWISE, ARE RESERVED BY SOUTHCO, INC.