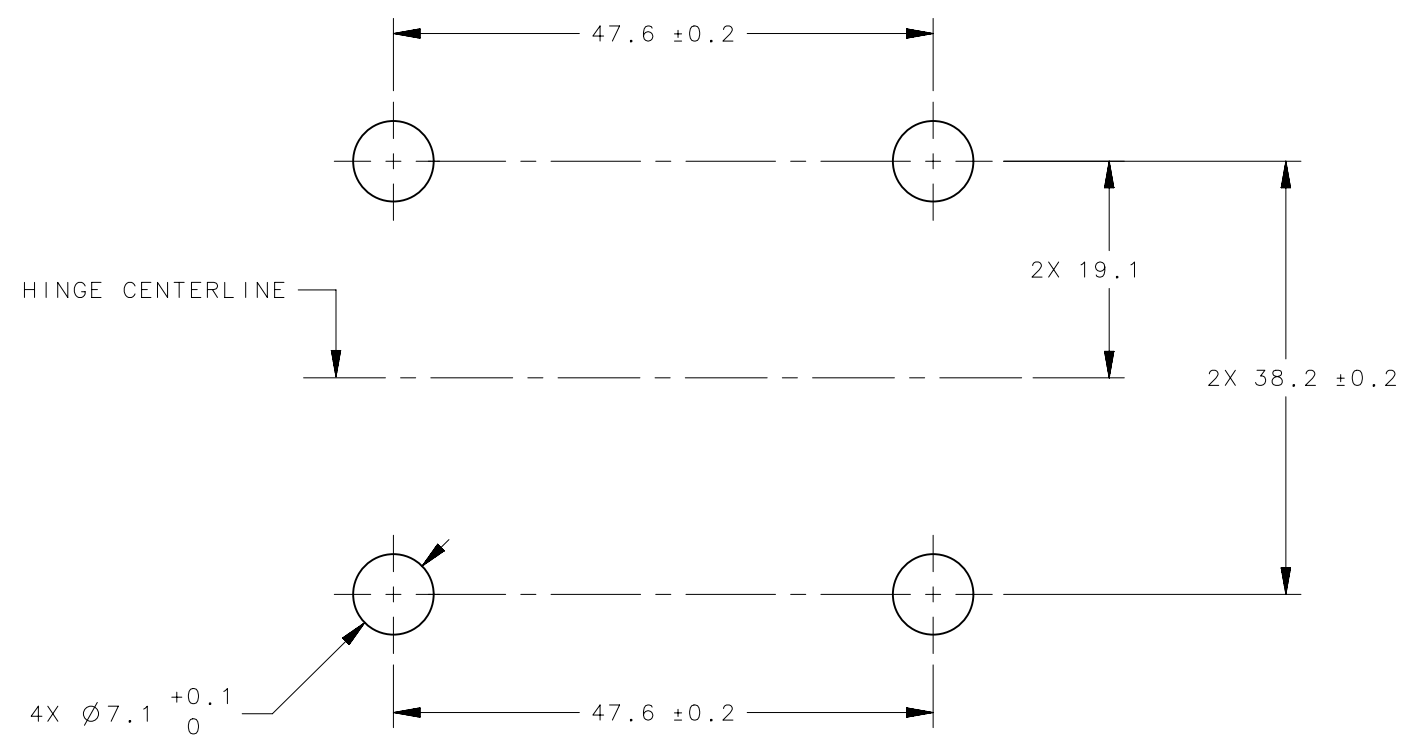
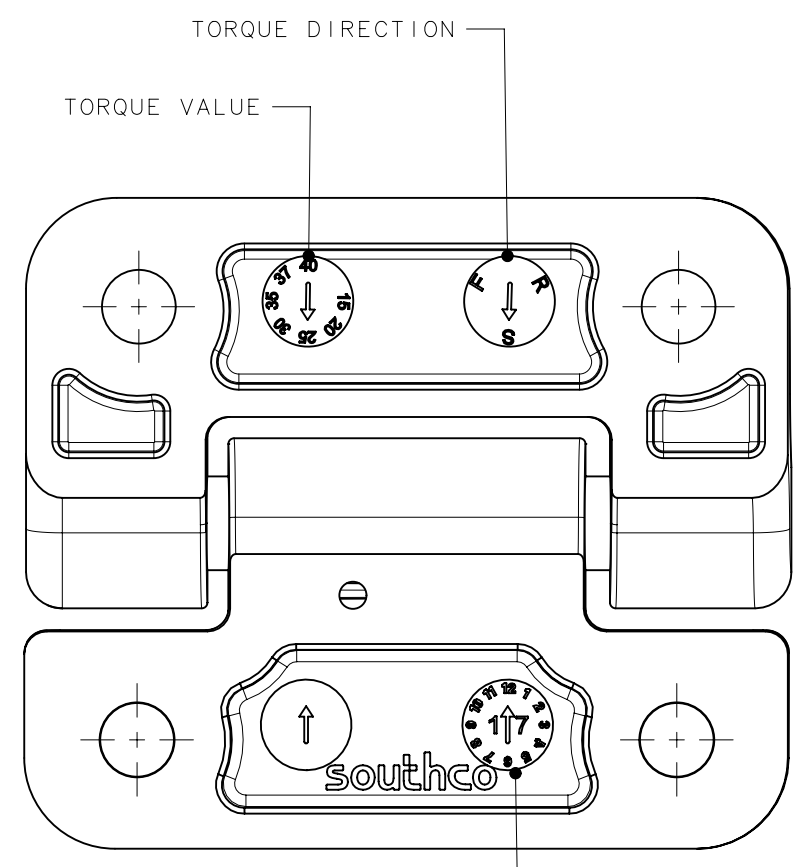
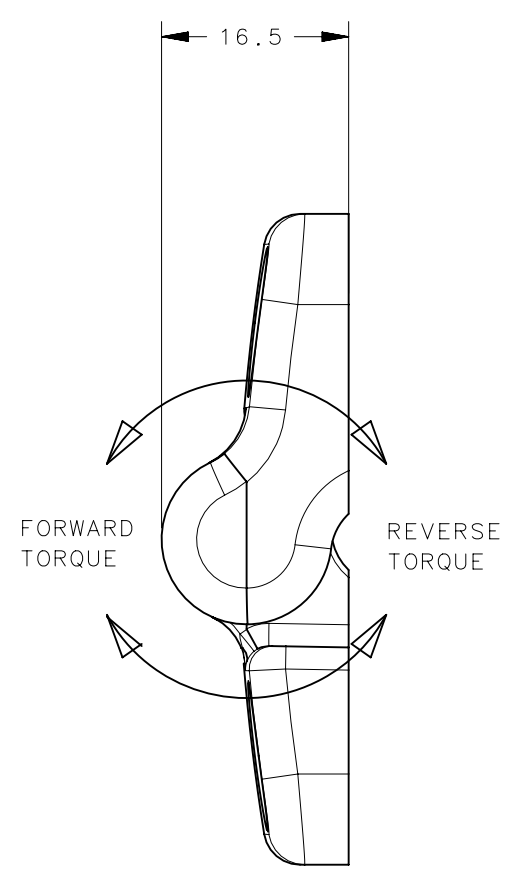
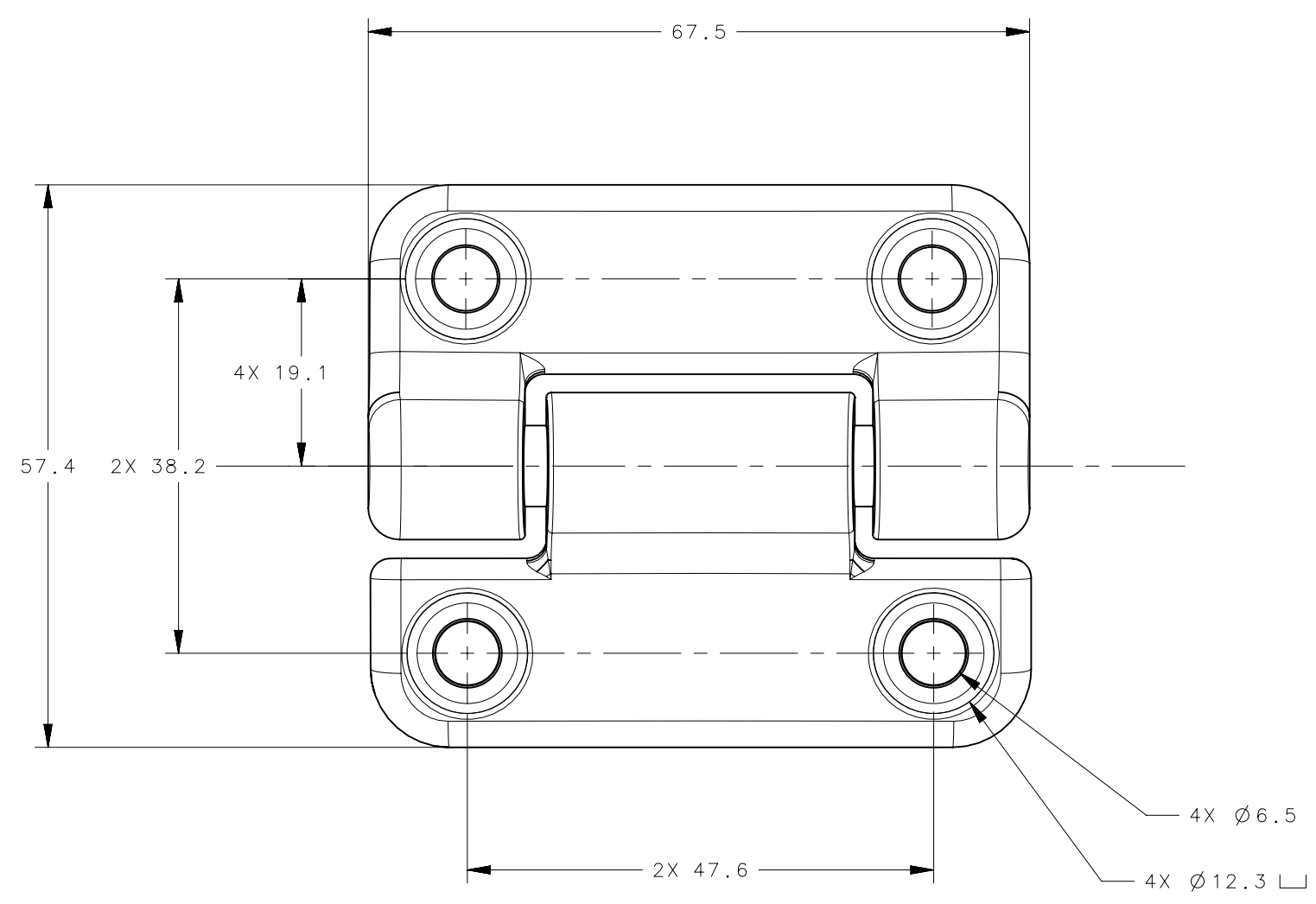
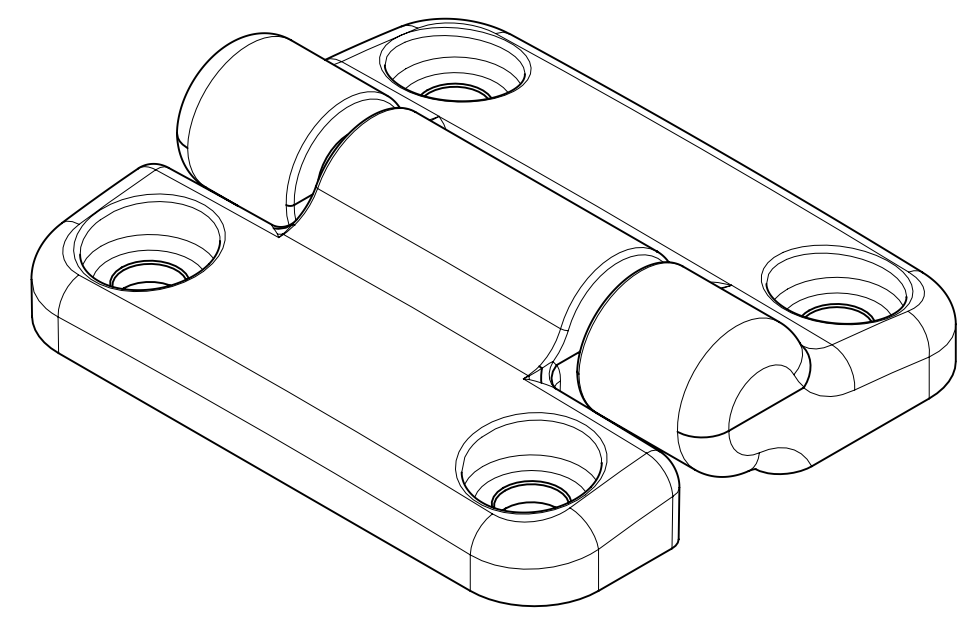


REVISION HISTORY			
REV	DATE	BY	DESCRIPTION
B	05NOV2018	JJT/MJS	PRN: P2018-2556



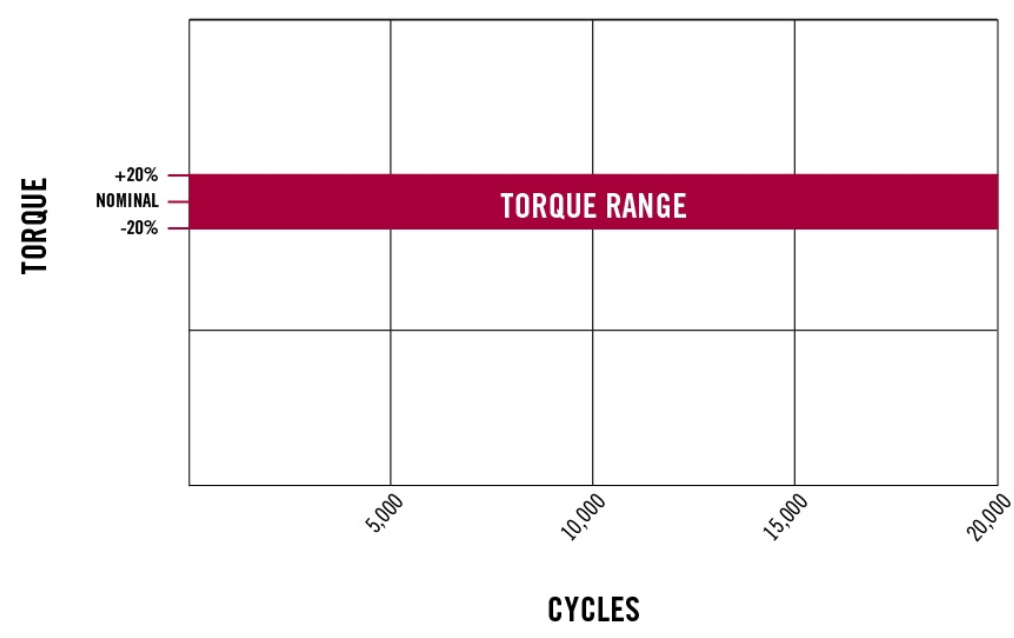
PANEL PREPARATION



FINISH	
-ZZ	MATERIAL, COLOR
E6-50-5XXX-10	NYLON, WHITE
E6-50-5XXX-20	NYLON, BLACK

PART NUMBER	FORWARD TORQUE, Nm (in-lbf)	REVERSE TORQUE, Nm (in-lbf)
E6-50-535S-ZZ	3.95 (35)	
E6-50-530S-ZZ	3.39 (30)	
E6-50-525S-ZZ	2.82 (25)	
E6-50-520S-ZZ	2.26 (20)	
E6-50-515S-ZZ	1.69 (15)	
E6-50-540F-ZZ	4.52 (40)	3.16 (28) REF
E6-50-535F-ZZ	3.95 (35)	2.77 (24.5) REF
E6-50-530F-ZZ	3.39 (30)	2.37 (21) REF
E6-50-525F-ZZ	2.82 (25)	1.98 (17.5) REF
E6-50-520F-ZZ	2.26 (20)	1.58 (14) REF
E6-50-515F-ZZ	1.69 (15)	1.19 (10.5) REF

TYPICAL TORQUE TREND FOR E6-5X-XX-XX (REFERENCE ONLY)



- NOTES:
- PERFORMANCE TORQUE TOLERANCE ±20% OVER 20,000 CYCLES
 - DESIGNED TO ACCEPT M6 SCREW OR EQUIVALENT
 - MATERIAL AND FINISH:
HINGE LEAVES AND HOUSING: NYLON
INTERNAL COMPONENTS: ZINC, HARDENED STEEL, ANODIZED ALUMINUM
 - SHOWN IN SHIPPING POSITION

THIRD ANGLE PROJECTION	 CONNECT · CREATE · INNOVATE
MILLIMETERS [IN]	
SURFACE AREA	TOLERANCES UNLESS OTHERWISE NOTED
VOLUME	UP TO 0.5 ±0.1 OVER 0.5 UP TO 6 ±0.2 OVER 6 UP TO 30 ±0.4 OVER 30 ±0.6 ANGLES ±5°
PROPRIETARY ITEM	DESCRIPTION: HINGE & CONTROLLED MOTION DEVICE E6 OVERMOLDED HINGE
EXCEPT FOR USES EXPRESSLY GRANTED IN WRITING, INFORMATION DISCLOSED HEREIN IS CONFIDENTIAL AND ALL RIGHTS, PATENT AND OTHERWISE, ARE RESERVED BY SOUTHCO, INC.	SIZE SYSTEM: C NX DWG NO.: J-E6-50-500 PER ASME Y14.5M-1994 DRAWN BY: JJT DATE: 01FEB2017 SCALE: 1.5:1 SHEET: 1 OF 1