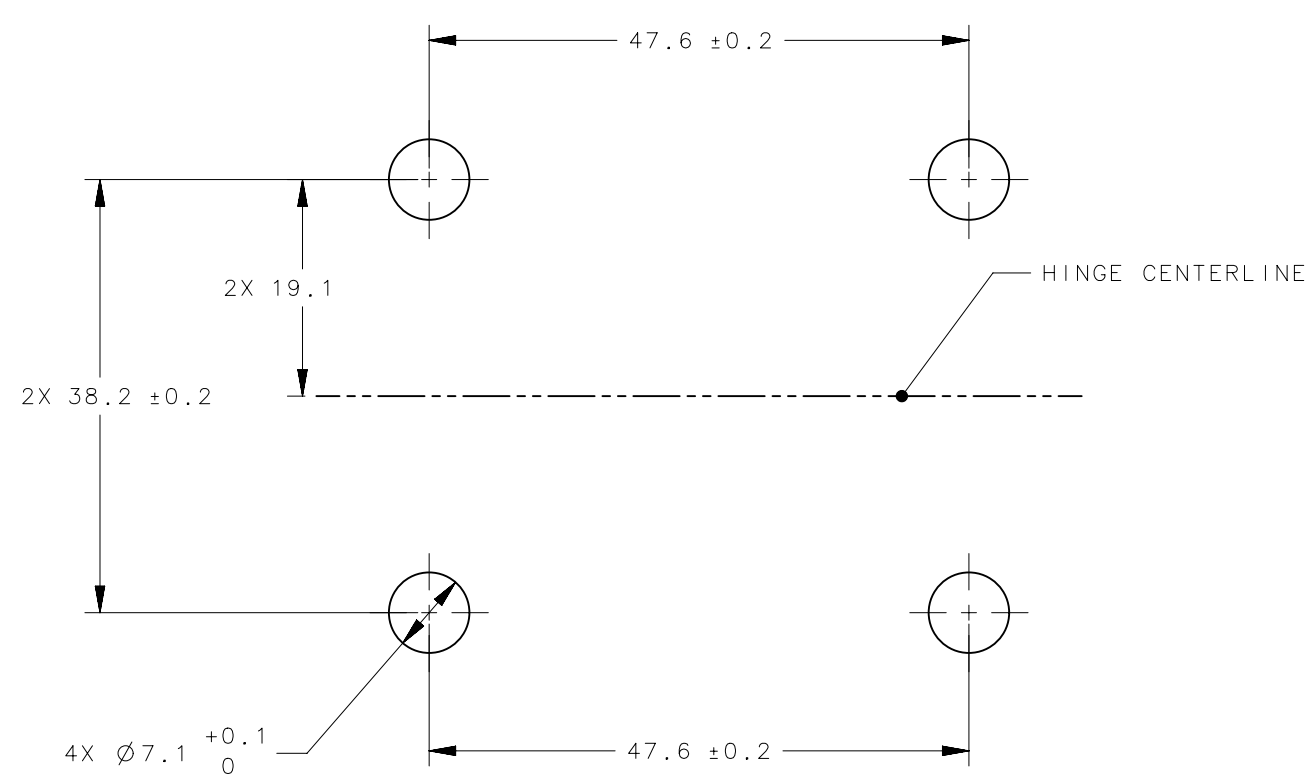
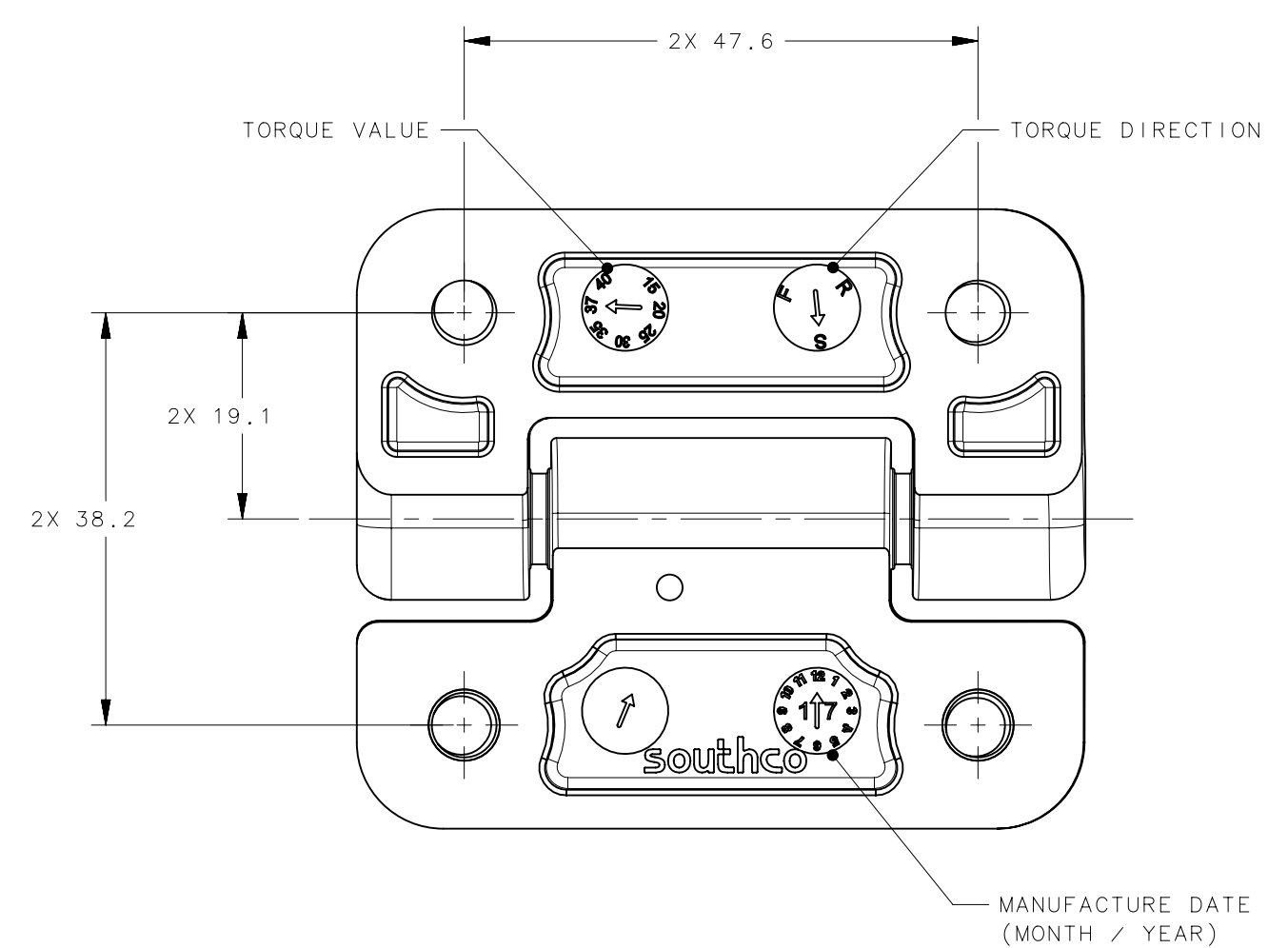
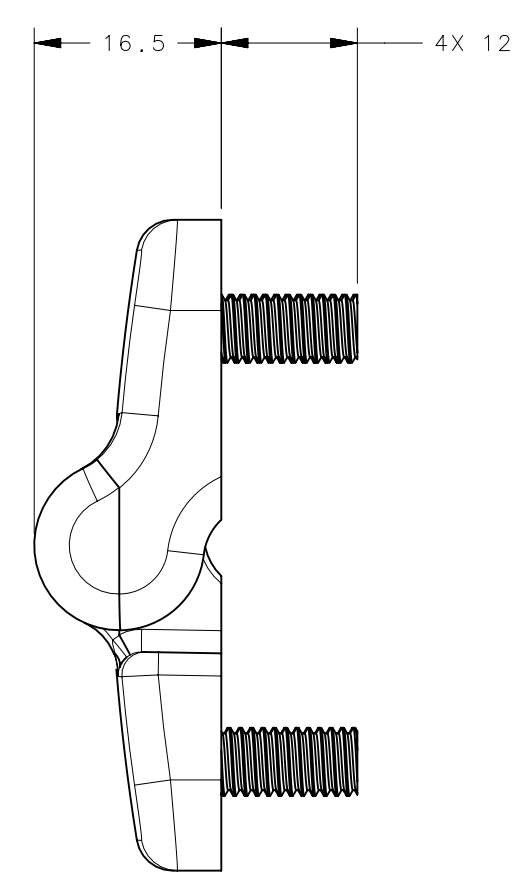
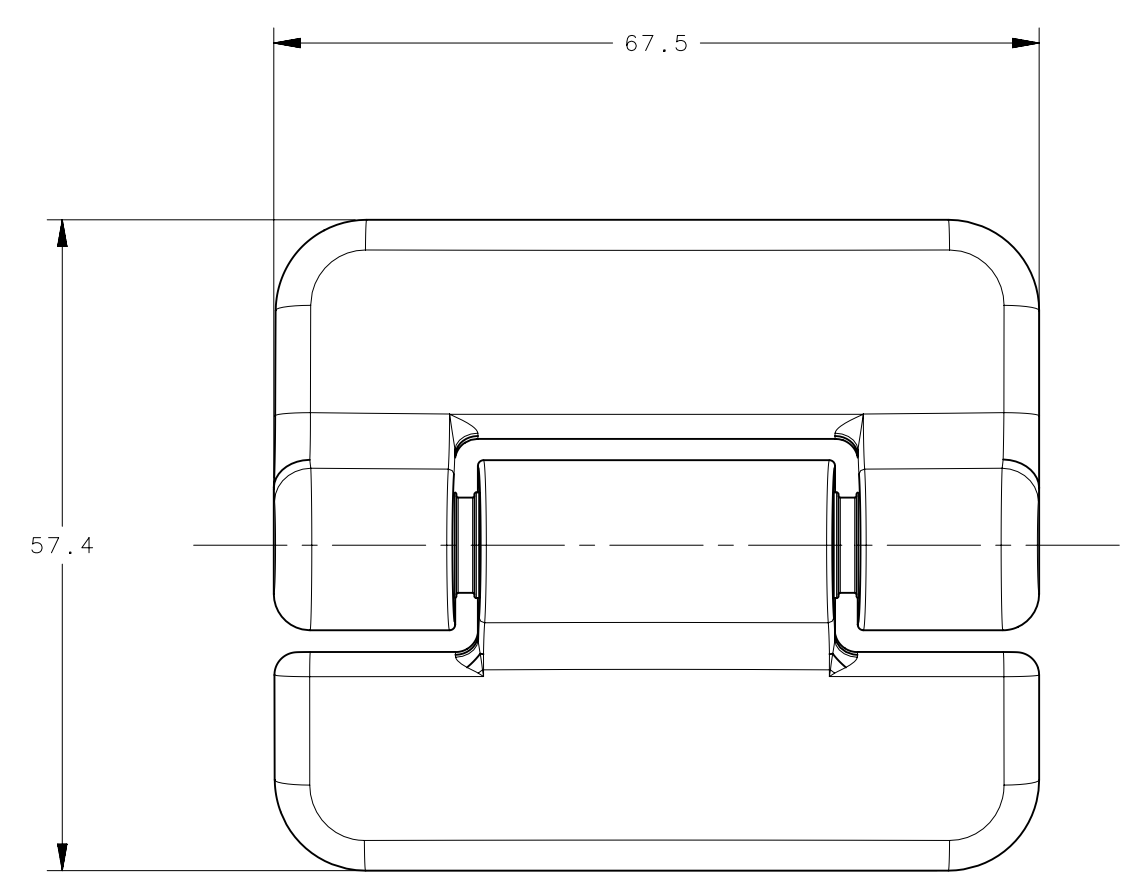
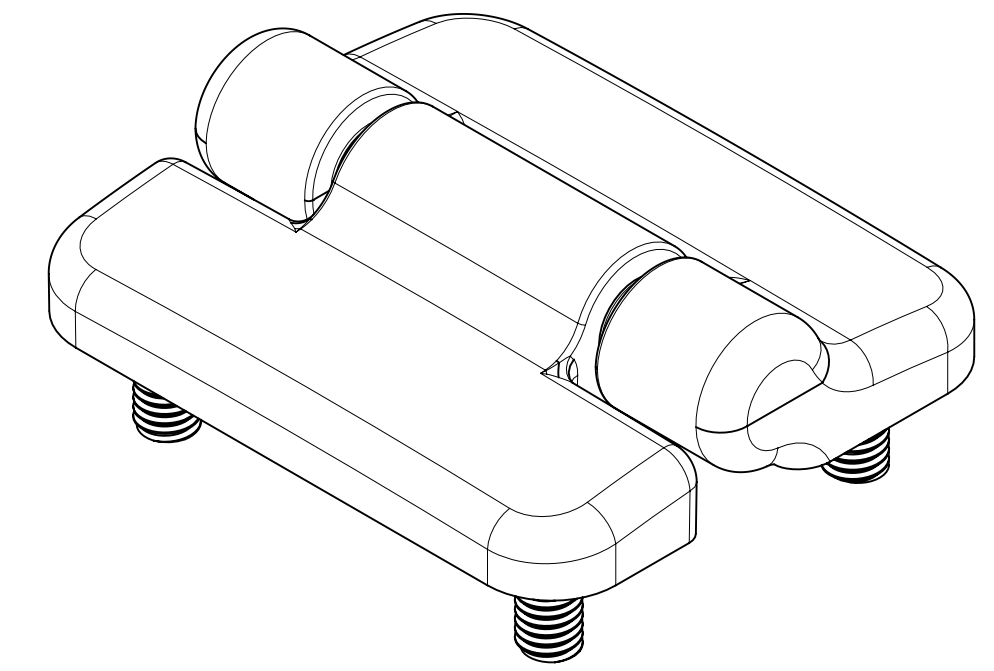


REVISION HISTORY			
REV	DATE	BY	DESCRIPTION
C	23OCT2018	CMS/MMM	PRN: P2018-2464



PANEL PREPARATION



NOTES:

- PERFORMANCE TORQUE TOLERANCE  $\pm 20\%$  OVER 20,000 CYCLES
- MINIMUM: 2.71 N-m (24in-lbf)  
MAXIMUM: 4.75 N-m (42in-lbf)
- THREADED STUDS: M6 X 1.0 THREAD
- MATERIAL AND FINISH:  
HINGE LEAVES AND HOUSING: GLASS FILLED NYLON, BLACK  
SHAFT AND THREADED STUDS: STAINLESS STEEL
- SHOWN IN SHIPPING POSITION
- WHEN ORDERING, USE E6-45-537S-20.

NO.	PART NUMBER	QTY	TYPE OF COMPONENT	MATERIAL	finish
5	E6-45-537S-20	1	HINGE	-	-
4	-	4	STUD	-	-
3	-	1	SHAFT	-	-
2	-	1	HOUSING	SEE NOTE 4	SEE NOTE 4
1	-	1	ADAPTER	-	-

THIRD ANGLE PROJECTION		 CONNECT · CREATE · INNOVATE	
MILLIMETERS [IN]			
TOLERANCES UNLESS OTHERWISE NOTED		DESCRIPTION E6-500 OVERMOLDED HINGE	
ALL DIMENSIONS WITHOUT TOLERANCES ARE FOR REFERENCE ONLY.		SIZE C NX	DWG. NO. J-E6-45-537S-20
PER ASME Y14.5M-1994		DRAWN BY JJT	DATE 12OCT2016
		SCALE 1:1	SHEET 1 OF 1