

REVISION HISTORY			
REV	DATE	BY	DESCRIPTION
C	19MAR2018	ELA/DJK	PRN: P2018-0690

NOTES:

- A. MATERIALS: ALL COMPONENTS ARE RoHS COMPLIANT
 HOUSING AND BASE: PC/ABS
 BUTTON: SILICONE
 CONTROLLER PCB: FR4, LEAD FREE HASL
 WIRE: 24 AWG, STRANDED, TC, STYLE UL 1571 OR UL 1007
 SCREWS: STEEL, ZINC PLATED, CLEAR PASSIVATION
 INTERCONNECT PCB: FR4, COPPER CLAD
- B. FOR SPECIFICATIONS AND OPERATING INSTRUCTIONS SEE SOUTHCO BLUETOOTH CONTROLLER OPERATING INSTRUCTIONS J-EA-BT-2-1-M.
- C. SHIPPED INDIVIDUALLY PROTECTED IN ESD BAG.
- D. INSTALLATION INSTRUCTIONS: (DO NOT OVER TIGHTEN MOUNTING HARDWARE)
 (1) REMOVE THE TWO SCREWS (#1 PHILLIPS DRIVE) THAT SECURE THE HOUSING TO THE BASE (SEE SHEET 2 OF 2).
 (2) MOUNT THE BASE TO THE MOUNTING SURFACE. RECOMMEND HARDWARE: M4 OR #8 SCREWS. DO NOT EXCEED 17 N-cm [1.5 lbf-in] OF TORQUE. (MOUNTING HARDWARE NOT PROVIDED).
 (3) SECURE THE HOUSING TO THE BASE BY SLIDING THE TAB IN THE HOUSING UNDER THE NOTCH IN THE BASE (SEE VIEW B ON SHEET 2 OF 2), CLOSE THE HOUSING AND SECURE IT TO THE BASE WITH THE TWO SCREWS FROM STEP (1). DO NOT EXCEED 17 N-cm [1.5 lbf-in] OF TORQUE.

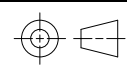
OPERATING REQUIREMENTS:

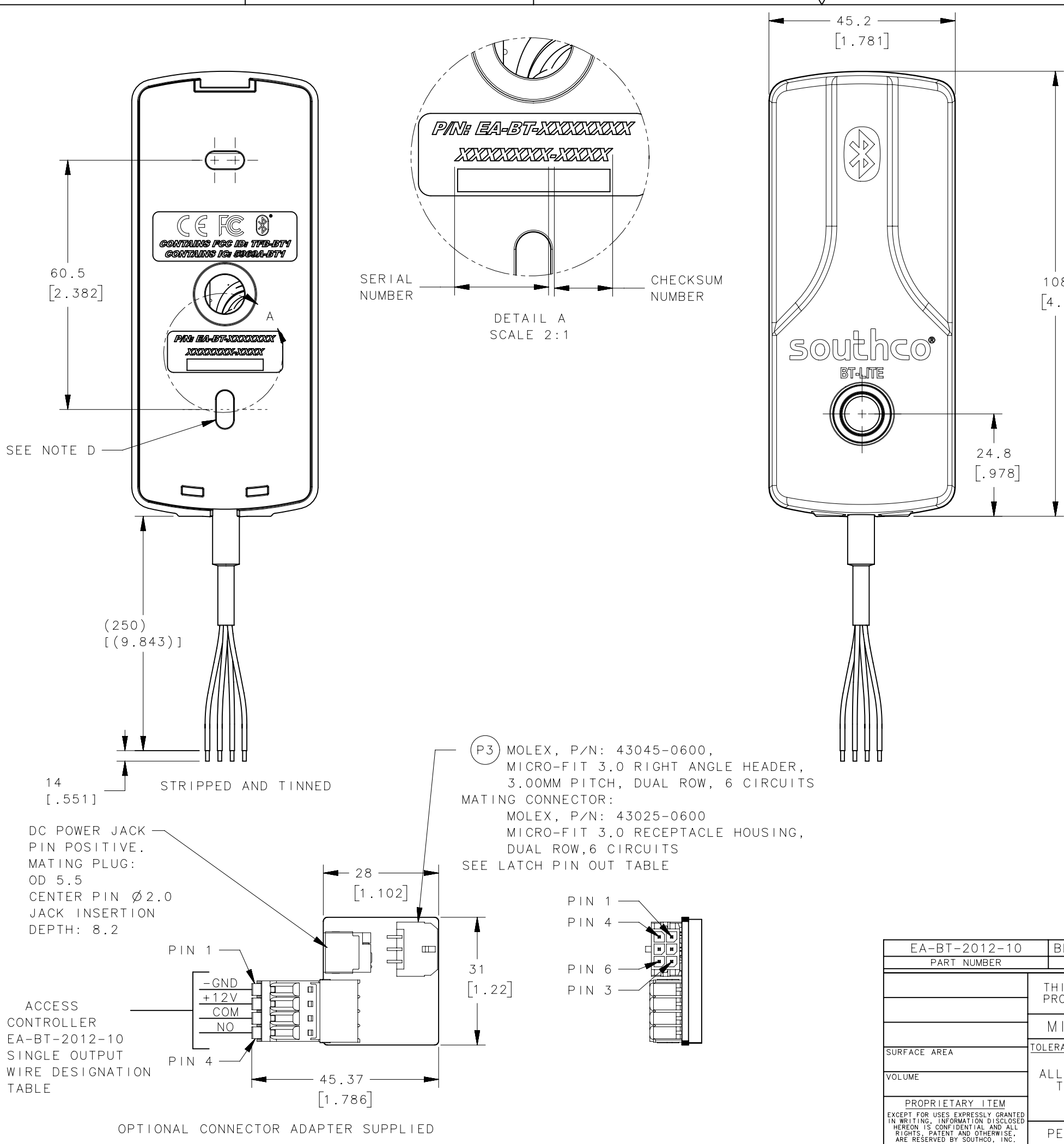
VOLTAGE (INPUT):	12VDC
CURRENT (INPUT):	20mA AVG, 50mA PEAK
OPERATING TEMP:	-40°F TO 185°F
RELAY OUTPUT:	750mA @ 12VDC/24VAC

SEE OPERATION INSTRUCTIONS BEFORE INSTALLING

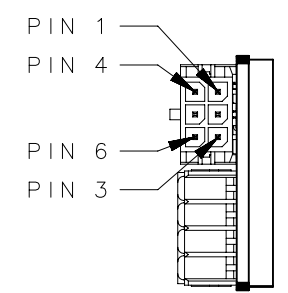
WIRE COLOR	FUNCTION
BLACK	GROUND (-)
RED	12VDC (+)
YELLOW	RELAY OUTPUT COMMON
BLUE	RELAY OUTPUT NORMALLY OPEN

P3: 6 PIN CONNECTOR		CONNECTION
PIN 1		GND
PIN 2		12 VDC, PWR
PIN 3		CONTROL SIGNAL
PIN 4		NOT USED
PIN 5		NOT USED
PIN 6		NOT USED

EA-BT-2012-10		BLUETOOTH® CONTROLLER SINGLE OUTPUT, BOTTOM WIRE ROUTING		SEE NOTES
PART NUMBER		TYPE OF COMPONENT		MATERIAL
THIRD ANGLE PROJECTION				
MILLIMETERS [IN]				
SURFACE AREA		TOLERANCES UNLESS OTHERWISE NOTED		
VOLUME		ALL DIMENSIONS WITHOUT TOLERANCES ARE FOR REFERENCE ONLY.		
PROPRIETARY ITEM		SIZE	SYSTEM	DWG NO.
EXCEPT FOR USES EXPRESSLY GRANTED IN WRITING, INFORMATION DISCLOSED HEREON IS CONFIDENTIAL AND ALL RIGHTS, PATENT AND OTHERWISE, ARE RESERVED BY SOUTHCO, INC.		A3	NX	J-EA-BT-2-1
PER ASME Y14.5M-1994		DRAWN BY	DATE	SCALE
		SDS	21JUL2017	1:1
				SHEET 1 OF 2



(P3) MOLEX, P/N: 43045-0600, MICRO-FIT 3.0 RIGHT ANGLE HEADER, 3.00MM PITCH, DUAL ROW, 6 CIRCUITS
 MATING CONNECTOR:
 MOLEX, P/N: 43025-0600 MICRO-FIT 3.0 RECEPTACLE HOUSING, DUAL ROW, 6 CIRCUITS
 SEE LATCH PIN OUT TABLE

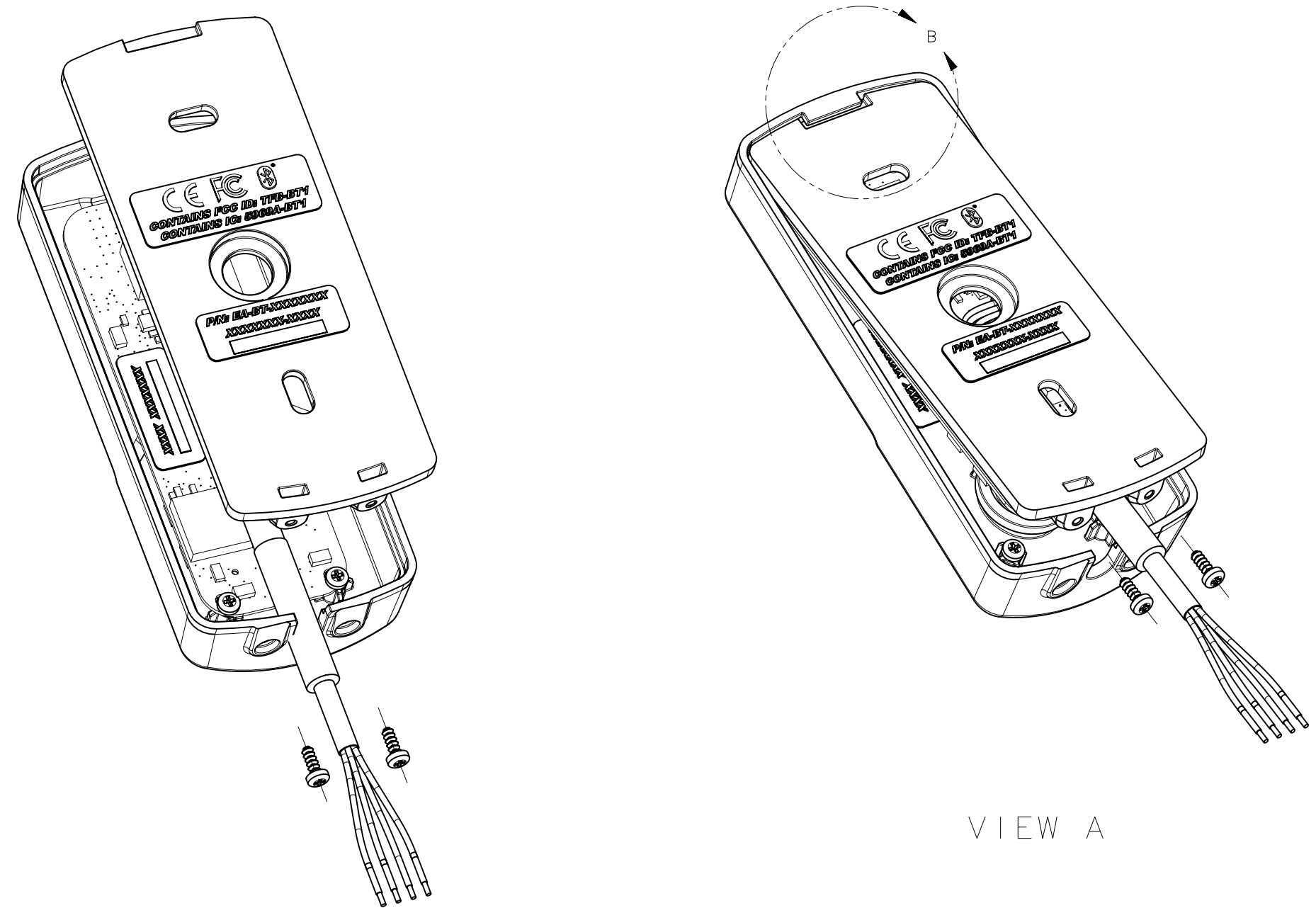


DC POWER JACK
 PIN POSITIVE.
 MATING PLUG:
 OD 5.5
 CENTER PIN Ø2.0
 JACK INSERTION DEPTH: 8.2

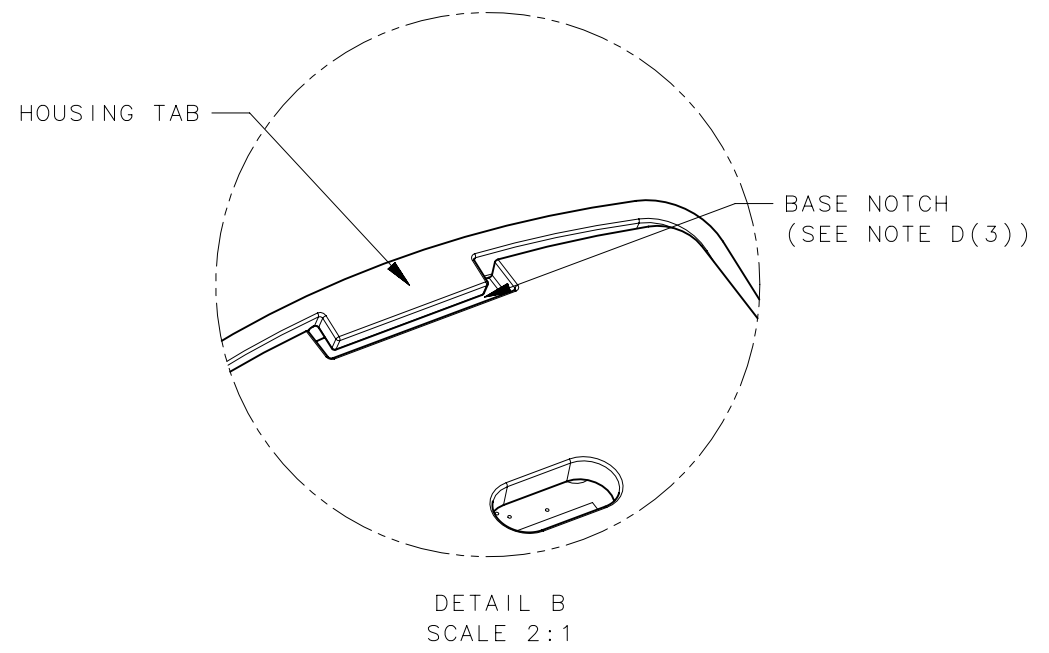
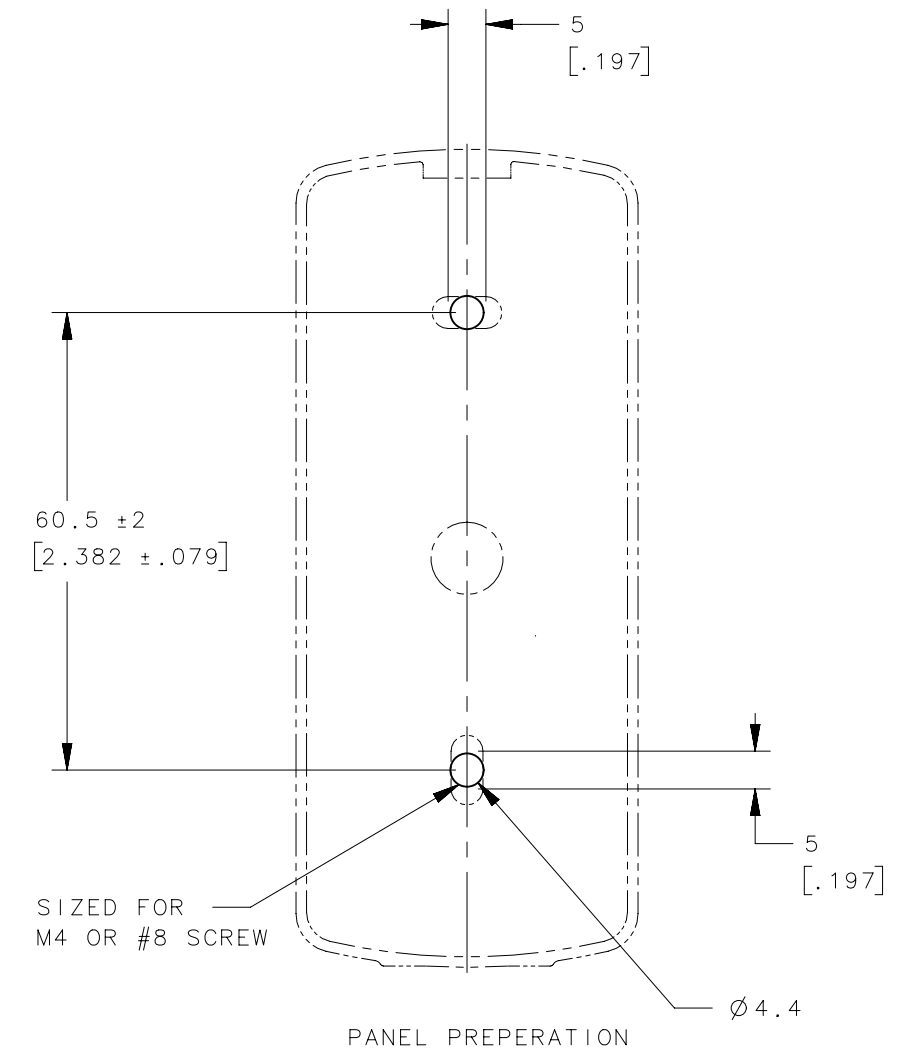
ACCESS CONTROLLER
 EA-BT-2012-10
 SINGLE OUTPUT
 WIRE DESIGNATION TABLE

OPTIONAL CONNECTOR ADAPTER SUPPLIED

REVISION HISTORY			
REV	DATE	BY	DESCRIPTION
C	19MAR2018	ELA/DJK	PRN: P2018-0690



VIEW A



THIRD ANGLE PROJECTION		southco [®] CONNECT • CREATE • INNOVATE	
MILLIMETERS [IN]			
TOLERANCES UNLESS OTHERWISE NOTED		DESCRIPTION BLUETOOTH [®] CONTROLLER SINGLE OUTPUT	
ALL DIMENSIONS WITHOUT TOLERANCES ARE FOR REFERENCE ONLY.		SIZE A3	SYSTEM NX
PROPRIETARY ITEM <small>EXCEPT FOR USES EXPRESSLY GRANTED IN WRITING, INFORMATION DISCLOSED HEREON IS CONFIDENTIAL AND ALL RIGHTS, PATENT AND OTHERWISE, ARE RESERVED BY SOUTHCO, INC.</small>		DWG NO. J-EA-BT-2-1	
PER ASME Y14.5M-1994		DRAWN BY SDS	DATE 21JUL2017
		SCALE 1:1	SHEET 2 OF 2

EA-BT Series Access Controller Quick Install Guide

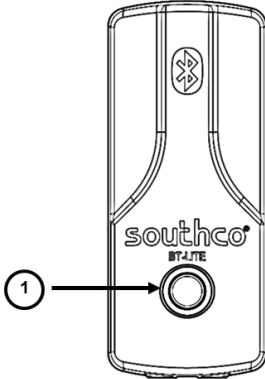
Package Contents

- EA-BT Series Access Controller
- Serial Number and Checksum Label
- Adapter Board (with terminal block plug installed)
- Quick Install Guide

Specifications

Power Connector: positive-on-center
2.1mm ID, 5.5mm OD, 8.2mm mating length
Current Rating: 2.5A maximum
Overall Dimensions: 45.4 x 31 x 13.5 mm (incl. terminal block plug)

EA-BT Series Access Controller



1. Admin Button

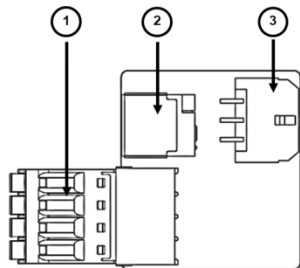
Features

- Single-door output
- Back-lit admin button for controller status
- For indoor use only

Specifications

Supply Voltage: 12VDC
Standby Current: 20mA typical at 12VDC
Operating Current: 50mA maximum at 12VDC
Relay Output (x1): 750mA @ 12/24VDC/AC
Read Distance: up to 30 feet
Overall Dimensions: 108.95 x 45 x 19.5 mm

Adapter Board



1. Controller Connector (shown with terminal block plug installed)
2. DC Power Jack
3. Latch Connector

Features

- simplifies wire harness management
- double-sided tape for mounting
- for indoor use only

Step 1 - Mounting and Installation

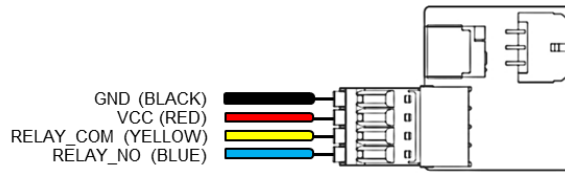
Please refer to Southco trade drawing J-EA-BT-2-1 for detailed mounting and installation instructions.

⚠ NOTE: Record the 7-digit serial number and 4 character checksum (41xxxx-xxxx) and store the label included with the EA-BT controller in a safe location. The serial number and checksum are also on the rear of the controller and the box it is shipped in.

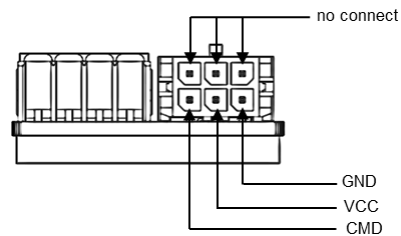
The EA-BT has a 4-wire stripped and tinned harness, as described below:

Color	Description
Red	12VDC
Black	GND
Yellow	Relay – Common
Blue	Relay – Normally Open

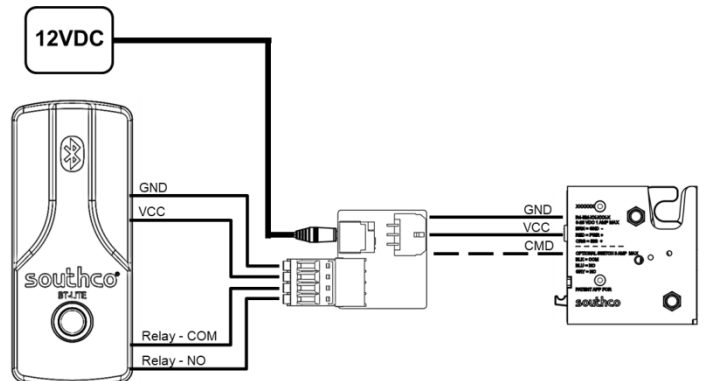
The adapter board is not required to operate the EA-BT controller, but can be used to simplify wire harness connections between the controller and a latch. If using the adapter board, insert the stripped and tinned EA-BT wires into the terminal block plug, as shown below. If wires need to be removed, then press the orange release tab in while pulling the wire out of the terminal.



The adaptor board's latch connector pinout is shown below. **NOTE:** The adaptor board **does not** support status signals from a connected latch

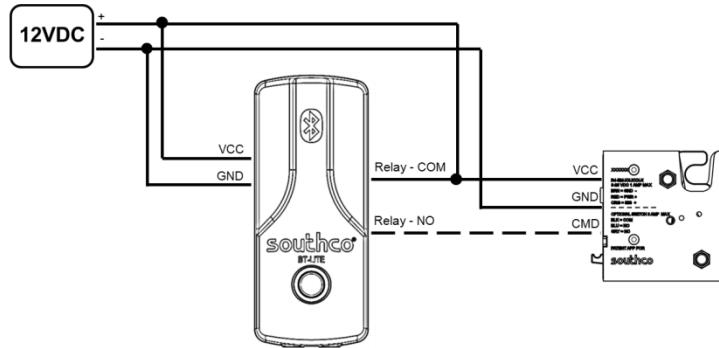


An example connection diagram with the adapter board is shown below.



EA-BT Series Access Controller Quick Install Guide

An example connection diagram without the adapter board is shown below. **To get started:**



1. Ensure EA-BT installation is complete.
2. Download the *VIZpin*® smart mobile application and **REGISTER** your mobile phone using the QR code below or search “VIZpin Smart” on the App Store or Google Play store.



iOS 8 or above



ANDROID OS 5.0 or above

NOTE: *BLUETOOTH*® LE or *BLUETOOTH*® Smart phone only. (ver 4.2, or higher)

You must register before signing up for the *VIZpin*® Lite Manager Portal

3. Visit www.southco-btlite.com to sign up for *VIZpin*® Lite Manager Portal, and issue *VIZpin*® Electronic Keys to begin using the EA-BT controller.

Step 2 – Download the Mobile App and Sign Up for *VIZpin*® Lite Manager Portal

The EA-BT is configured to be used with the *VIZpin*® cloud-based access control system.

FCC Compliance Statement

This device complies with Part 15 of the FCC Rules. Operation is subject to the following two conditions: (1) This device may not cause harmful interference, and (2) this device must accept any interference received, including interference that may cause undesired operation.

Note: This equipment has been tested and found to comply with the limits for a Class B digital device, pursuant to Part 15 of the FCC Rules. These limits are designed to provide reasonable protection against harmful interference in a residential installation. This equipment generates, uses and can radiate radio frequency energy and, if not installed and used in accordance with the instructions, may cause harmful interference to radio communications. However, there is no guarantee that interference will not occur in a particular installation. If this equipment does cause harmful interference to radio or television reception, which can be determined by turning the equipment off and on, the user is encouraged to try to correct the interference by one or more of the following measures:

- Reorient or relocate the receiving antenna.
- Increase the separation between the equipment and receiver.
- Connect the equipment into an outlet on a circuit different from that to which the receiver is connected.
- Consult the dealer or an experienced radio/television technician for help.

Changes and modifications not expressly approved by the manufacturer or registrant of this equipment can void your authority to operate this equipment under Federal Communications Commission rules.

Industry Canada Compliance Statement

CAN ICES-3(B)/NMB-3(B)

This device complies with Industry Canada licence-exempt RSS standard(s). Operation is subject to the following two conditions: (1) this device may not cause interference, and (2) this device must accept any interference, including interference that may cause undesired operation of the device.

Le présent appareil est conforme aux CNR d'Industrie Canada applicables aux appareils radio exempts de licence. L'exploitation est autorisée aux deux conditions suivantes: (1) l'appareil ne doit pas produire de brouillage, et (2) l'utilisateur de l'appareil doit accepter tout brouillage radioélectrique subi, même si le brouillage est susceptible d'en compromettre le fonctionnement.

Trademark Statements

ANDROID is a trademark of Google Inc.

iOS is a trademark of Apple Inc.

VIZpin is a registered trademark of ECKey® Corporation.

The *BLUETOOTH*® word mark and logos are registered trademarks owned by Bluetooth SIG, Inc. and use is under license.



For technical support of this product contact: info@southco.com