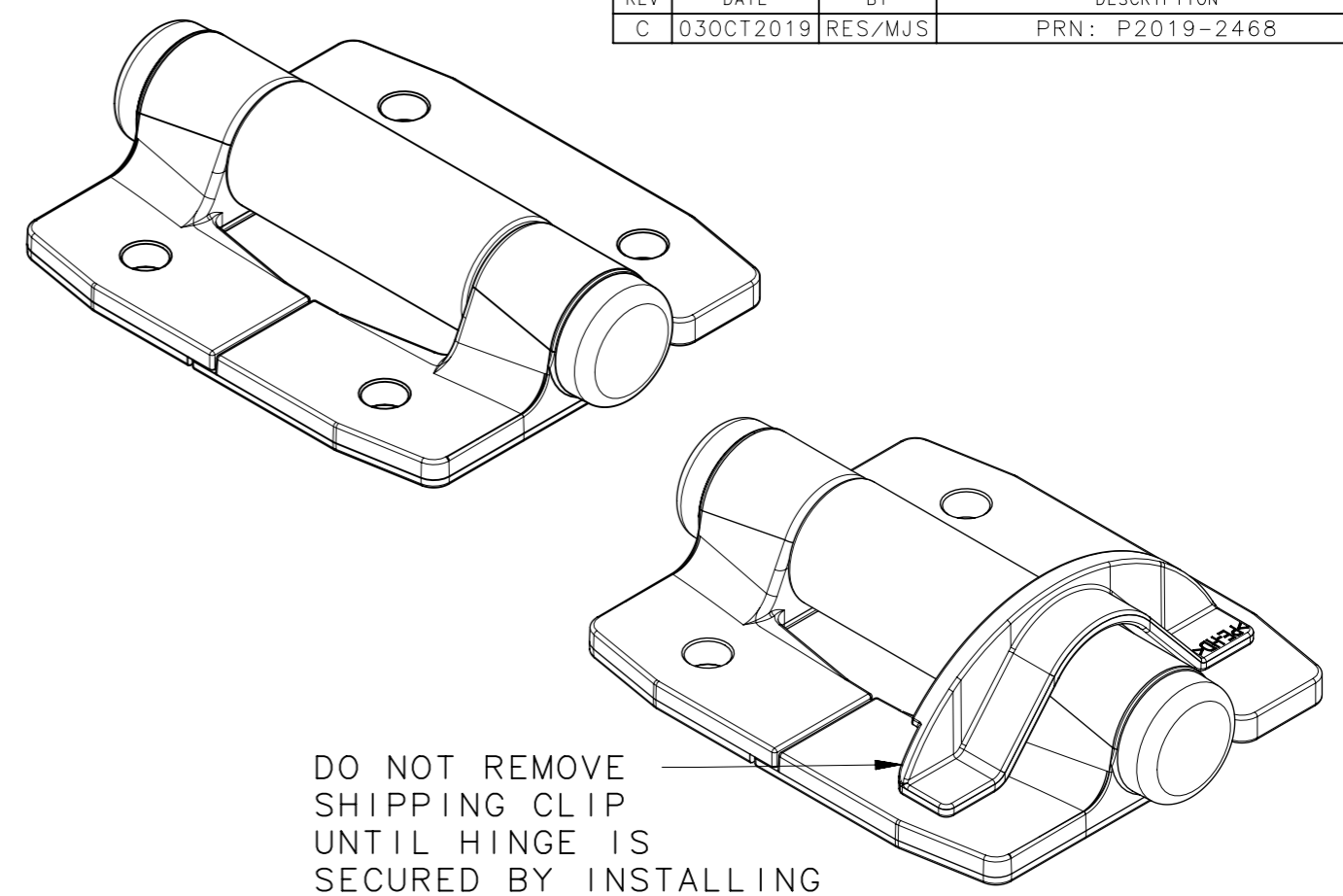
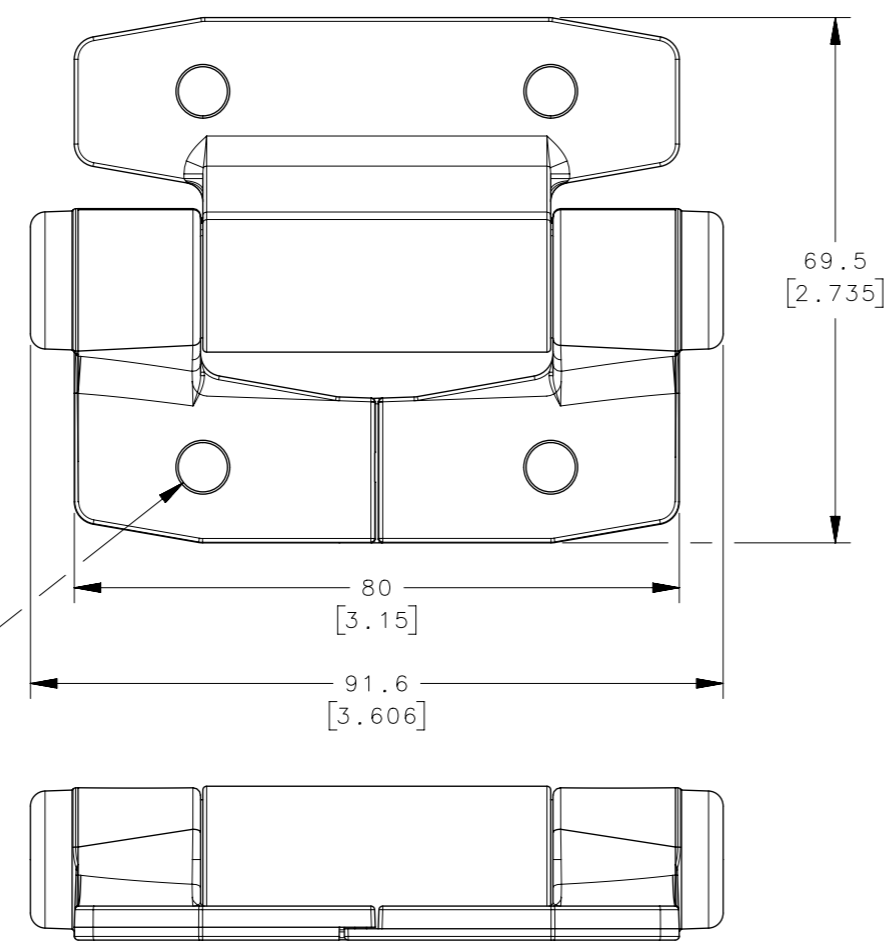
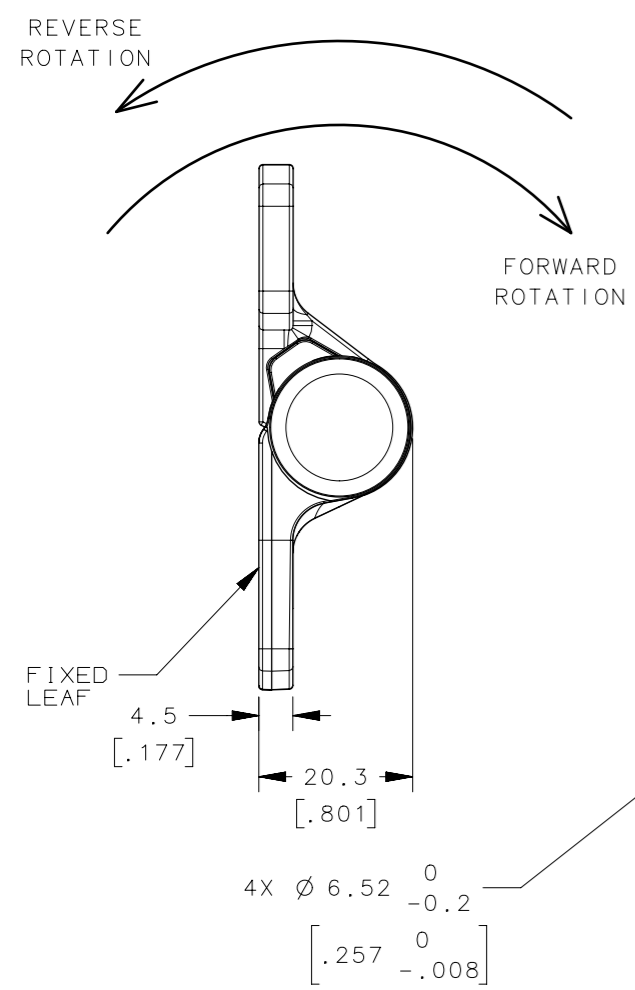
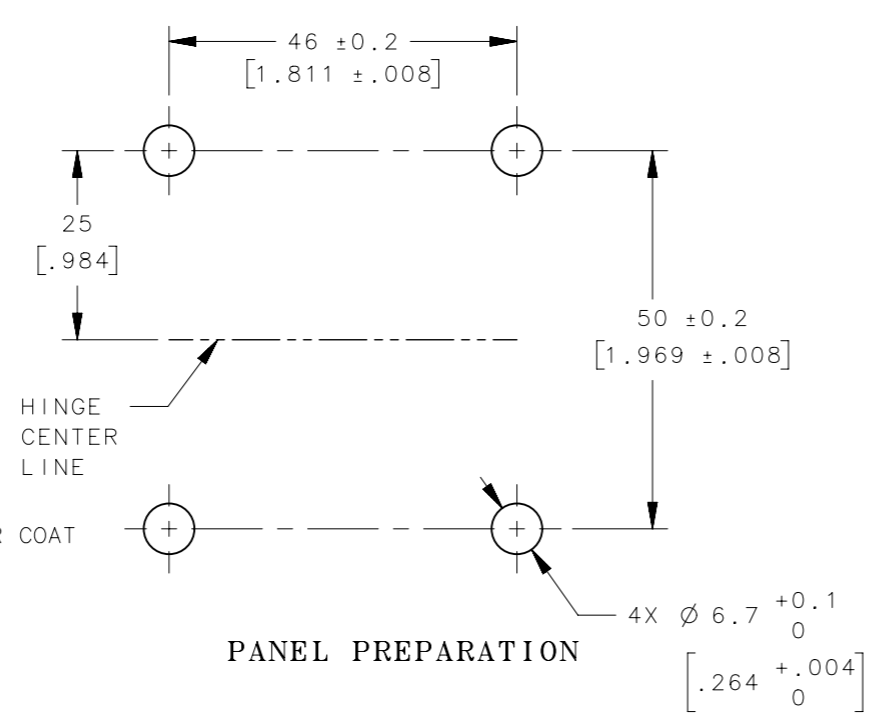


REVISION HISTORY			
REV	DATE	BY	DESCRIPTION
C	03OCT2019	RES/MJS	PRN: P2019-2468



DO NOT REMOVE SHIPPING CLIP UNTIL HINGE IS SECURED BY INSTALLING FIRST PAIR OF SCREWS; DISCARD CLIP WHEN REMOVED



- NOTES:
- A. USE M6 MOUNTING HARDWARE
  - B. VISIBLE SURFACES WHEN INSTALLED TO MEET CLASS B REQUIREMENTS OF SOUTHCO COSMETIC STANDARD S-121
  - C. MATERIAL AND FINISH:  
 HOUSING AND LEAVES: ALUMINUM ALLOY, POWDER COAT  
 SHAFT, TORQUE ELEMENTS, COILED SPRING PIN, CLUTCH HOUSING, ROLLERS - STEEL  
 WASHERS, CLUTCH SPRINGS - STAINLESS STEEL  
 O-RINGS - BUNA-N RUBBER  
 BEARINGS - BRASS  
 BUSHINGS - DIE CAST ZINC, POWDER COAT  
 SHIPPING CLIP - UHMW POLYETHYLENE  
 THIS PRODUCT IS RoHS COMPLIANT
  - D. TORQUE IN FREE DIRECTION IS 0.5 Nm MAXIMUM

SOUTHCO PART NUMBER	FORWARD TORQUE	REVERSE TORQUE
E6-10-620F0-Z	2.3±0.46 Nm (20±4 in-lb)	FREE
E6-10-635F0-Z	3.9±0.78 Nm (35±7 in-lb)	FREE
E6-10-650F0-Z	5.7±1.1 Nm (50±10 in-lb)	FREE
E6-10-665F0-Z	7.3±1.4 Nm (65±13 in-lb)	FREE
E6-10-680F0-Z	9±1.8 Nm (80±16 in-lb)	FREE
E6-10-695F0-Z	10.7±2.1 Nm (95±19 in-lb)	FREE
E6-10-6110F0-Z	12.4±2.5 Nm (110±22 in-lb)	FREE

E6-10-620R0-Z	FREE	2.3±0.46 Nm (20±4 in-lb)
E6-10-635R0-Z	FREE	3.9±0.78 Nm (35±7 in-lb)
E6-10-650R0-Z	FREE	5.7±1.1 Nm (50±10 in-lb)
E6-10-665R0-Z	FREE	7.3±1.4 Nm (65±13 in-lb)
E6-10-680R0-Z	FREE	9±1.8 Nm (80±16 in-lb)
E6-10-695R0-Z	FREE	10.7±2.1 Nm (95±19 in-lb)
E6-10-6110R0-Z	FREE	12.4±2.5 Nm (110±22 in-lb)

Z DESIGNATES FINISH:  
 Z = 50: BLACK POWDER COAT  
 Z = 76; WHITE POWDER COAT

CPB NUMBER 2017-1180	THIRD ANGLE PROJECTION	
	MILLIMETERS [IN]	
	TOLERANCES UNLESS OTHERWISE NOTED	DESCRIPTION HINGE & CONTROLLED MOTION DEVICE ONE WAY FRICTION HINGE
PROPRIETARY ITEM EXCEPT FOR USES EXPRESSLY GRANTED IN WRITING, INFORMATION DISCLOSED HEREON IS CONFIDENTIAL AND ALL RIGHTS, PATENT AND OTHERWISE, ARE RESERVED BY SOUTHCO, INC.	ALL DIMENSIONS WITHOUT TOLERANCES ARE FOR REFERENCE ONLY.	SIZE A3
PER ASME Y14.5M-1994	DRAWN BY RES	SYSTEM NX
	DATE 31JAN2019	DWG NO. J-E6-10-6-0
	SCALE 1:1	SHEET 1 OF 1