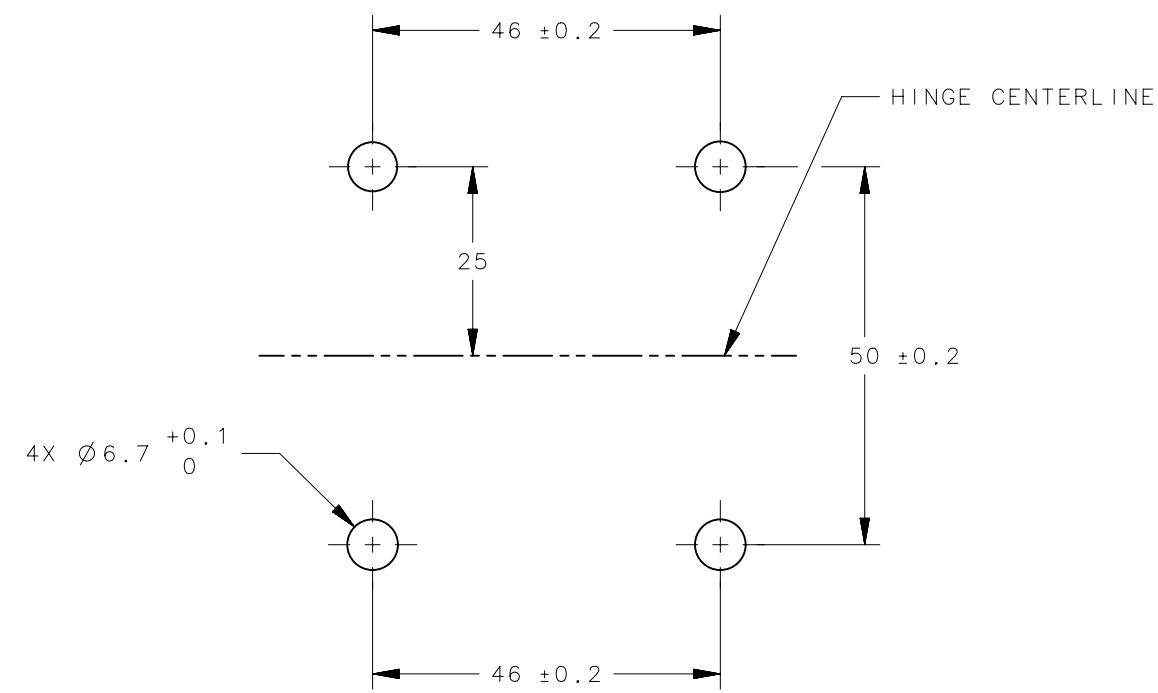
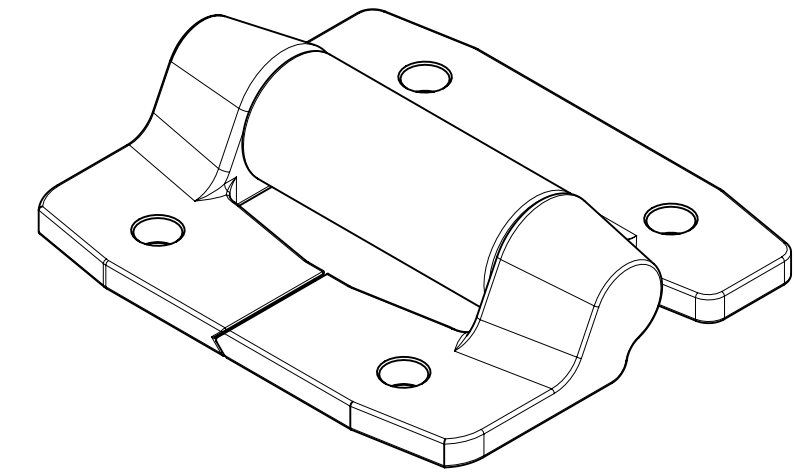


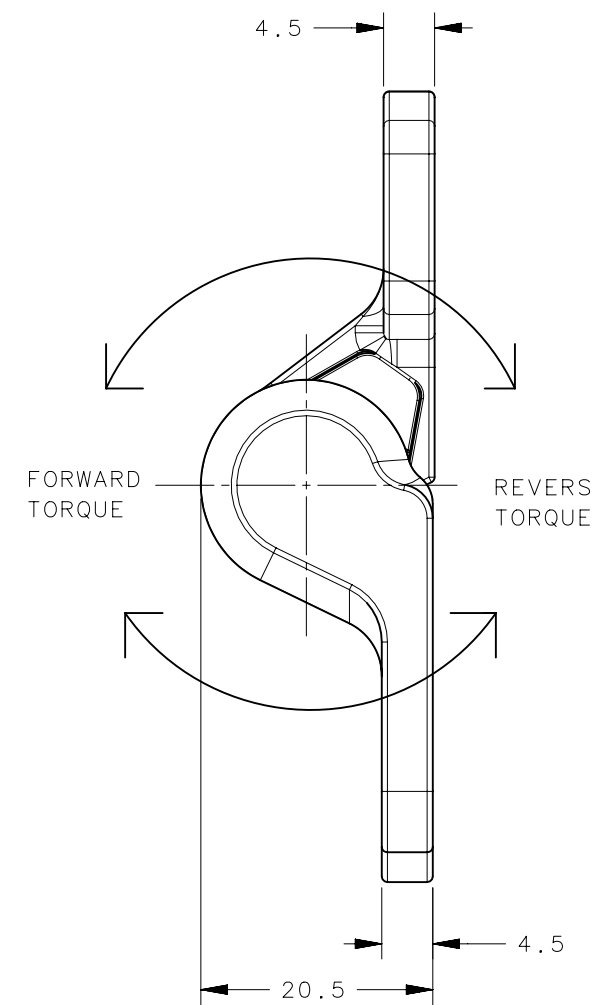
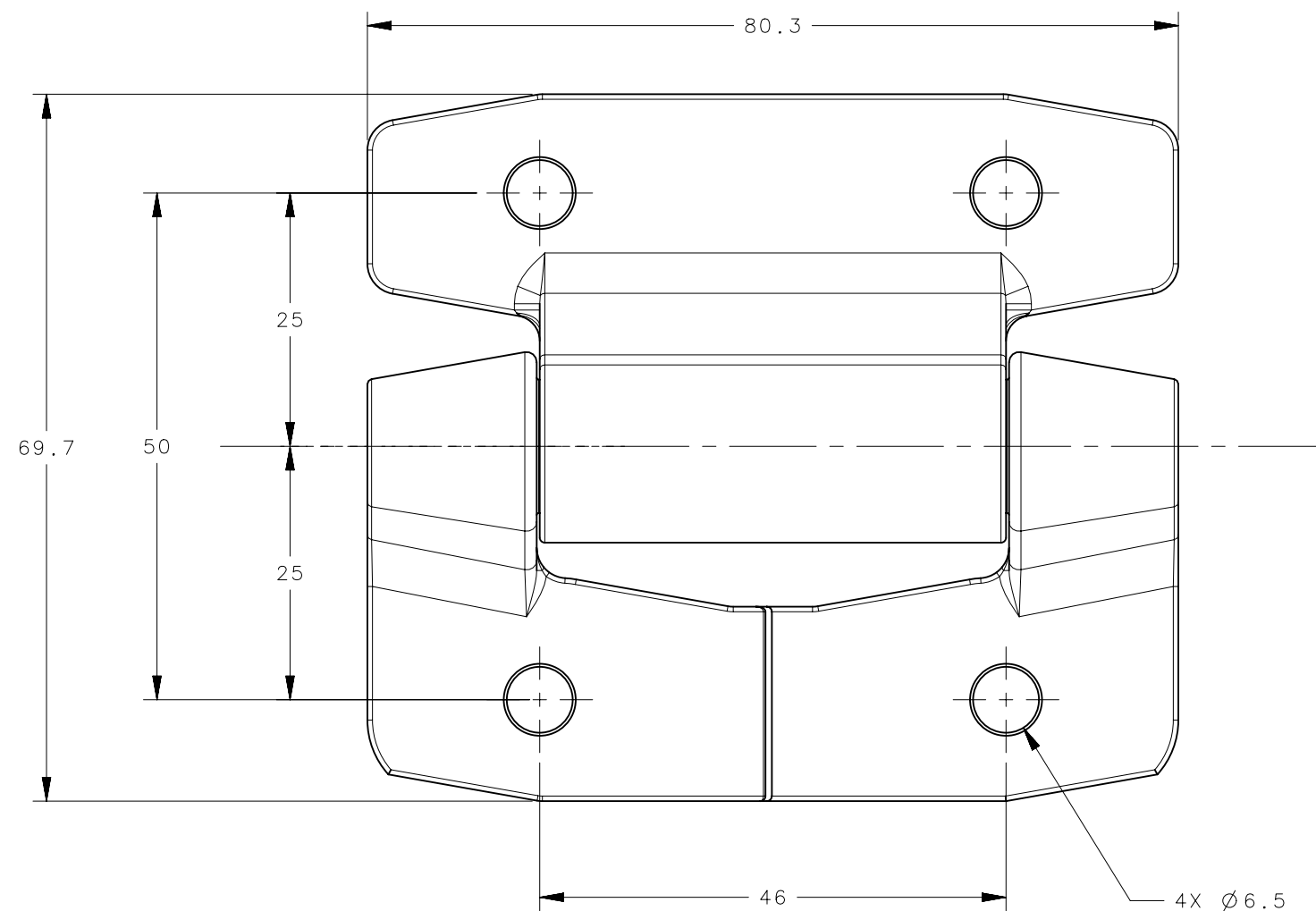
| REVISION HISTORY | | | |
|------------------|-----------|---------|-----------------|
| REV | DATE | BY | DESCRIPTION |
| G | 17OCT2014 | CMS/BGL | PRN: P2014-2091 |



PANEL PREPARATION



SCALE 1:1



NOTES:

- PERFORMANCE TORQUE TOLERANCE $\pm 20\%$ OVER 20,000 CYCLES
- DESIGNED TO ACCEPT M6 SCREW OR EQUIVALENT
- MATERIAL AND FINISH:
HINGE LEAVES AND HOUSING: ALUMINUM ALLOY, BLACK POWDER COAT
SHAFT, PIN & TORQUE ELEMENTS: STEEL
O-RINGS: BUNA-N RUBBER
BEARINGS: BRASS
BUSHINGS: ZINC ALLOY

| PART NUMBER | FORWARD TORQUE | REVERSE TORQUE |
|----------------|----------------------------------|----------------------------------|
| E6-10-600-50 | FREE OPERATING | |
| E6-10-620S-50 | 2.3 N-m (20.0 in-lbf) $\pm 20\%$ | |
| E6-10-635S-50 | 3.9 N-m (35.0 in-lbf) $\pm 15\%$ | |
| E6-10-650S-50 | 5.7 N-m (50.0 in-lbf) | |
| E6-10-665S-50 | 7.3 N-m (65.0 in-lbf) | |
| E6-10-680S-50 | 9.0 N-m (80.0 in-lbf) | |
| E6-10-620F-50 | 2.3 N-m (20.0 in-lbf) $\pm 20\%$ | 1.7 N-m (14.9 in-lbf) REF |
| E6-10-635F-50 | 3.9 N-m (35.0 in-lbf) $\pm 15\%$ | 3.0 N-m (26.7 in-lbf) REF |
| E6-10-650F-50 | 5.7 N-m (50.0 in-lbf) | 4.0 N-m (35.7 in-lbf) REF |
| E6-10-665F-50 | 7.3 N-m (65.0 in-lbf) | 5.4 N-m (47.5 in-lbf) REF |
| E6-10-680F-50 | 9.0 N-m (80.0 in-lbf) | 6.7 N-m (59.4 in-lbf) REF |
| E6-10-695F-50 | 10.7 N-m (95.0 in-lbf) | 7.8 N-m (68.9 in-lbf) REF |
| E6-10-6110F-50 | 12.4 N-m (110.0 in-lbf) | 9.0 N-m (79.8 in-lbf) REF |
| E6-10-620R-50 | 1.7 N-m (14.9 in-lbf) REF | 2.3 N-m (20.0 in-lbf) $\pm 20\%$ |
| E6-10-635R-50 | 3.0 N-m (26.7 in-lbf) REF | 3.9 N-m (35.0 in-lbf) $\pm 15\%$ |
| E6-10-650R-50 | 4.0 N-m (35.7 in-lbf) REF | 5.7 N-m (50.0 in-lbf) |
| E6-10-665R-50 | 5.4 N-m (47.5 in-lbf) REF | 7.3 N-m (65.0 in-lbf) |
| E6-10-680R-50 | 6.7 N-m (59.4 in-lbf) REF | 9.0 N-m (80.0 in-lbf) |
| E6-10-695R-50 | 7.8 N-m (68.9 in-lbf) REF | 10.7 N-m (95.0 in-lbf) |
| E6-10-6110R-50 | 9.0 N-m (79.8 in-lbf) REF | 12.4 N-m (110.0 in-lbf) |

| | | |
|---|--|--|
| THIRD ANGLE PROJECTION | | CONNECT • CREATE • INNOVATE |
| MILLIMETERS [IN] | | |
| TOLERANCES UNLESS OTHERWISE NOTED | | DESCRIPTION HINGE - CONSTANT TORQUE |
| ALL DIMENSIONS WITHOUT TOLERANCES ARE FOR REFERENCE ONLY. | | SIZE SYSTEM C NX |
| DWG NO. J-E6-10-680 | | SCALE 1.5:1 |
| PER ASME Y14.5M-1994 | | SHEET 1 OF 1 |