

Starter kit VEE STARTERSET

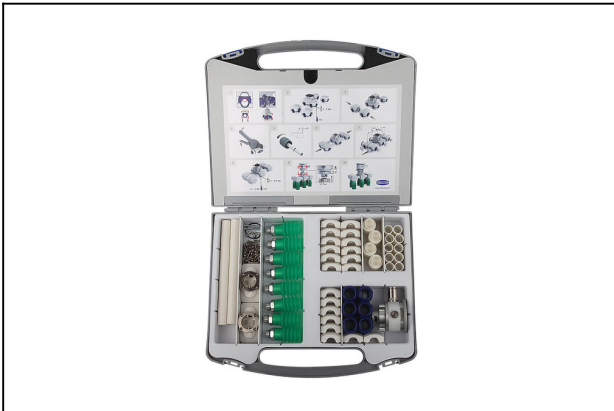
Part no.:10.01.36.00030

<https://www.schmalz.com/10.01.36.00030>

Homepage > Vacuum Technology for Automation > Vacuum Components > Area Gripping Systems and End Effectors > Vacuum End Effectors

VEE > Starter Set VEE > VEE STARTERSET

120 piece starter set for setup of up to two VEE vacuum end effectors



with: Assembly instructions

Spare Parts



FLAN-PL 63x11.5-UNI

Part no.10.01.30.00017

Flange plate (round)

External diameter D: 63 mm

Length L: 11.5 mm

Size: UNI

Starter kit VEE STARTERSET

Part no.:10.01.36.00030

<https://www.schmalz.com/10.01.36.00030>



SC 080 G3/8-AG

Part no.10.01.06.02593

Connection element for suction cup "SchmalzConnector"

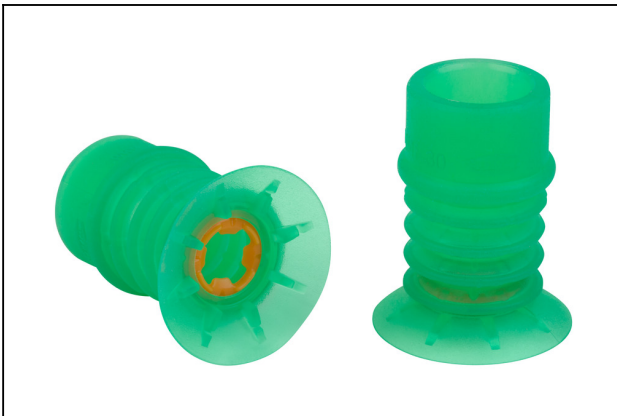
Connection geometry: 080

Vacuum connection: G3/8"-M

Overall length: 32 mm

Fitting length: 7.5 mm

Nominal diameter dn: 10.3 mm



SPB4f 30 SI-55 SC080

Part no.10.01.06.03264

Bellows suction cup (round) for wear-resistant Handling

Size: 30

Suction cup material: Silicone SI

Material hardness: 55 °Sh

Material characteristics:

FDA-compatible

Number of folds: 4.5



VEE-QCF2

Part no.10.01.36.00113

VEE basic module with quick-change adapter and integrated vacuum line

Type: 2

Accessories

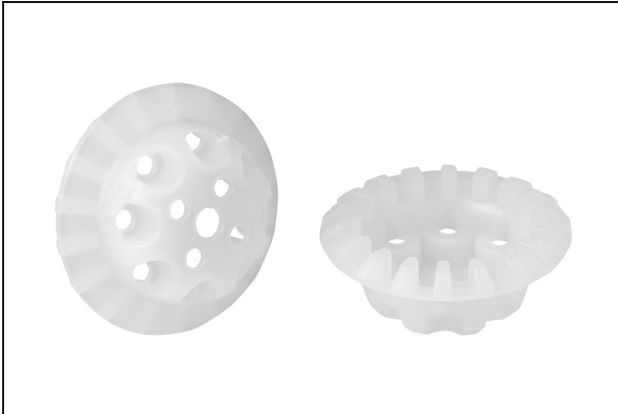
Contact to Schmalz

J. Schmalz GmbH | Johannes-Schmalz-Straße, 72293 Glatten, Deutschland | +49 7443 2403-102 | customercenter@schmalz.de

Starter kit VEE STARTERSET

Part no.:10.01.36.00030

<https://www.schmalz.com/10.01.36.00030>



SPI 24 PE SPB4-30

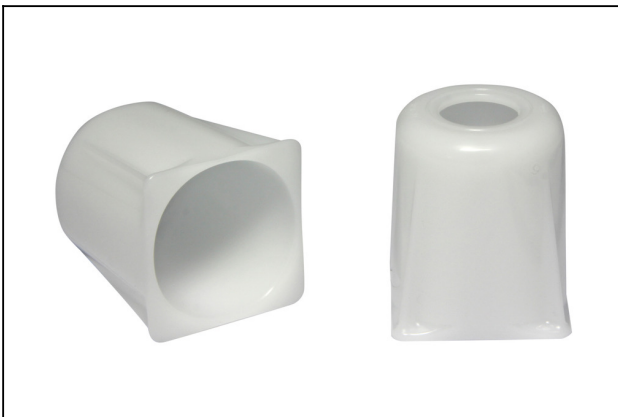
Part no.10.01.06.02855

Suction cup insert for reinforcing and anti-rotation of suction cups

Size: 24

Material: Polyethylene

Application: SPB4-30



SPSE 30

Part no.10.01.06.02953

Stabilization element for bellows suction cups SPB4

Size: 30