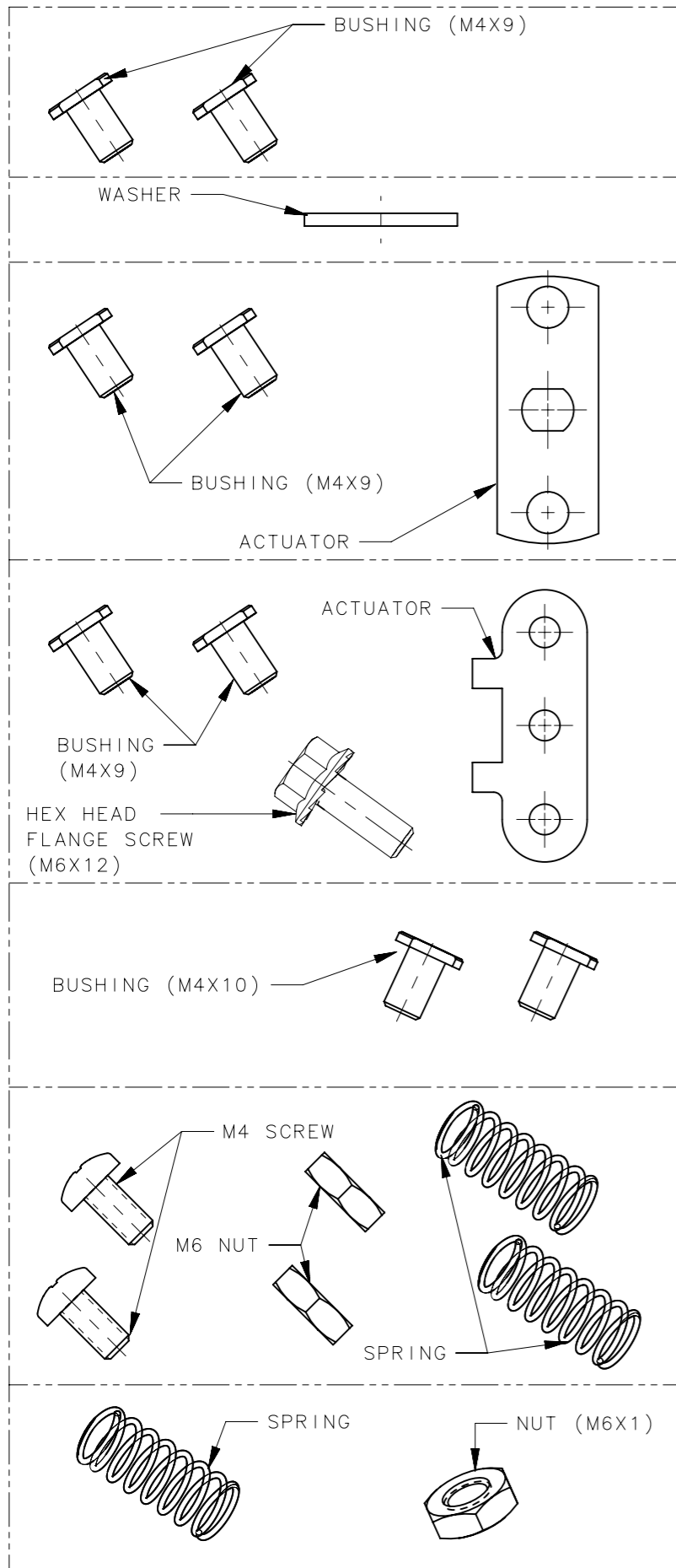


HARDWARE PACKAGE CONTENTS

PART NUMBER

MATERIAL AND FINISH

REVISION HISTORY			
REV	DATE	BY	DESCRIPTION
C	17APR2018	NSB/DMS	PRN: P2018-0944



- A8-20 BUSHING: BRASS, NATURAL
- A8-21 WASHER: STEEL, ZINC PLATED BRIGHT
- A8-22 BUSHING: BRASS, NATURAL
ACTUATOR: 1010 STEEL,
ZINC ALLOY PLATED,
BRIGHT CHROMATE PLUS SEALER
- A8-24 BUSHING: BRASS, NATURAL
ACTUATOR: 1010 STEEL, ZINC
ALLOY PLATED, BRIGHT
CHROMATE PLUS SEALER
SCREW: STEEL, ZINC ALLOY
PLATED, BRIGHT CHROMATE
PLUS SEALER
- A8-25 BUSHING: BRASS, NATURAL
- A8-30 SCREW: STEEL, ZINC ALLOY
PLATED
NUT: LOW CARBON STEEL,
ZINC PLATED YELLOW
SPRING: 302 STAINLESS
STEEL, PASSIVATED
- A8-30-1 SCREW, NUT AND SPRING:
STAINLESS STEEL, PASSIVATED
- A8-31 SPRING: 302 STAINLESS
STEEL, PASSIVATED
NUT: LOW CARBON STEEL,
ZINC PLATED YELLOW

LATCH FAMILY-HARDWARE PACKAGE CROSS REFERENCE			
SOUTHCO LATCH PRODUCT CLASS	SIZE/STYLE	HARDWARE PACKAGE PART NUMBER	THROW
E3	INTERNATIONAL HEX DRIVE AND T-HANDLE	A8-25	27.4
E5	ALL	A8-24	23
01	MID-SIZE	A8-31	19
24	ALL	A8-25	17.5
62	MEDIUM (FLUSH)	A8-22	16.1
	MEDIUM		
	LARGE	A8-20	22.2
	LARGE (FLUSH)		
68	EXTRA LARGE	A8-25	31.8
	BAIL HANDLE		
	LARGE T-HANDLE		
92	LARGE T-HANDLE	A8-20	22.2
	MEDIUM T-HANDLE	A8-25	17.5
92	ALL	A8-21	19

ORDERING INFORMATION OF A COMPLETE ASSEMBLY EXAMPLE

ONCE THE ROD LENGTH AND LATCH FAMILY HAVE BEEN DETERMINED, ORDER THE ROD ROLLER COMPRESSION SYSTEM AS FOLLOWS USING THIS AS AN EXAMPLE: A SOUTHCO PRODUCT CLASS NUMBER 68 LARGE T-HANDLE LATCH ASSEMBLY; CENTERED IN A 2000 MILLIMETER CABINET FRAME, MEASURED FROM INSIDE EDGE TO INSIDE EDGE. CALCULATE THE ROD LENGTH AND ORDER THE FOLLOWING PARTS.

TWO ROD ASSEMBLIES, PART NUMBER A8-10-0985
 ONE HARDWARE PACKAGE, PART NUMBER A8-20 (DETERMINED BY LATCH FAMILY)
 TWO KEEPERS, PART NUMBER A8-60 (OPTIONAL)

ANOTHER EXAMPLE WOULD BE UNEQUAL LENGTH RODS. USING THE SAME LATCH ASSEMBLY FROM ABOVE, LOCATED 50 MILLIMETERS OFF CENTER OF THE CABINET FRAME. CALCULATE THE ROD LENGTH FOR EACH SIDE OF THE LATCH ACTUATOR AND ORDER THE FOLLOWING PARTS:

ONE ROD ASSEMBLY OF EACH LENGTH, PART NUMBER A8-10-1035 AND A8-10-0935
 ONE HARDWARE PACKAGE, PART NUMBER A8-20 (DETERMINED BY LATCH FAMILY)
 TWO KEEPERS, PART NUMBER A8-60 (OPTIONAL)

SURFACE AREA	THIRD ANGLE PROJECTION		
	VOLUME		
PROPRIETARY ITEM	TOLERANCES UNLESS OTHERWISE NOTED	DESCRIPTION	
EXCEPT FOR USES EXPRESSLY GRANTED IN WRITING, INFORMATION DISCLOSED HEREON IS CONFIDENTIAL AND ALL RIGHTS, PATENT AND OTHERWISE, ARE RESERVED BY SOUTHCO, INC.	ALL DIMENSIONS WITHOUT TOLERANCES ARE FOR REFERENCE ONLY.	No. A8 ROD ROLLER SYSTEM ASSEMBLY HARDWARE PACKAGES	
PER ASME Y14.5M-1994	SIZE A3	SYSTEM NX	DWG NO. J-A8-3
	DRAWN BY JSS/GEA	DATE 22SEP1995	SCALE 1:0.75 SHEET 1 OF 1