

southco

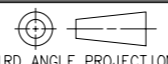
PROPRIETARY ITEM - EXCEPT FOR USES EXPRESSLY GRANTED IN WRITING, INFORMATION DISCLOSED HEREON IS CONFIDENTIAL AND ALL RIGHTS, PATENT AND OTHERWISE ARE RESERVED BY SOUTHCO, INC.

NYLATCH™ STANDOFF
LOW-PROFILE 1/4-TURN


DATE	DRAWN	CHKD	SCALE	DRAWING NUMBER
24FEB2005	MDY	MLG	2:1	J-NY-S6-1

REV	DATE	DRAWN/CHKD	DESCRIPTION
A	05AUG2005	AAB/MJS	PRN: P2005-1011

INCHES
ALL DIMENSIONS WITHOUT TOLERANCES ARE FOR REFERENCE ONLY.

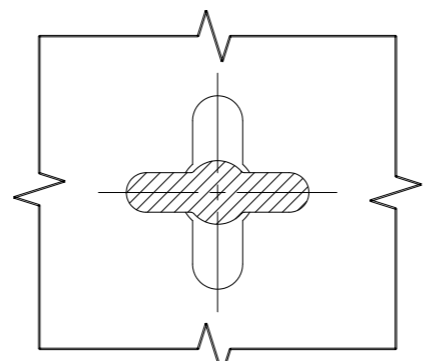
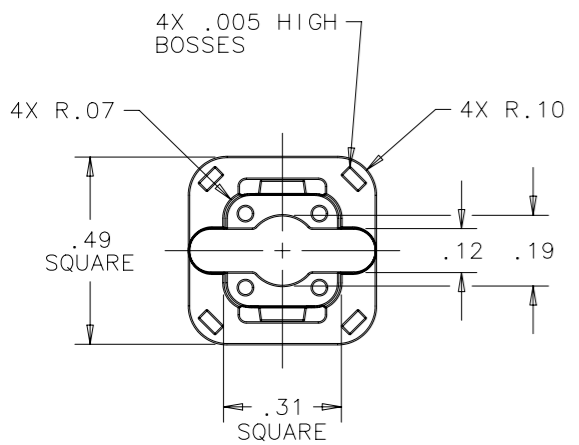


THIRD ANGLE PROJECTION

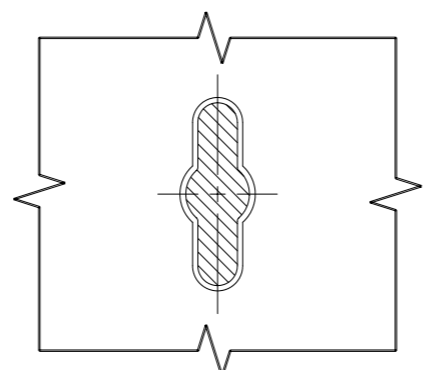


B PAPER SIZE

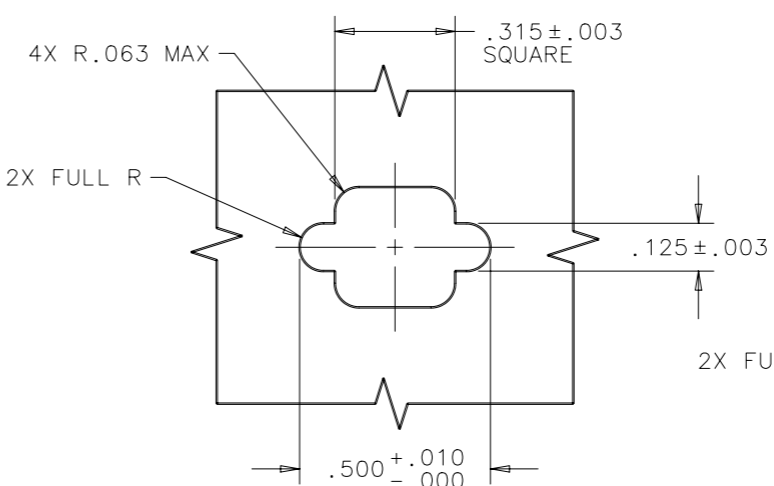
PART NUMBER	P	B	C	D	E	F	MATERIAL	COLOR
NY-S6-1	.392	.700	.063	.150	.063	.030	POLYCARBONATE	BLACK
NY-S6-2	.519	.827	.063	.150	.063	.030	POLYCARBONATE	BLACK
NY-S6-3	.397	.716	.070	.150	.070	.030	POLYCARBONATE	WHITE
NY-S6-4	.392	.700	.063	.150	.063	.030	POLYCARBONATE	WHITE
NY-S6-5	.519	.827	.063	.150	.063	.030	POLYCARBONATE	WHITE
NY-S6-6	.397	.716	.070	.150	.070	.030	POLYCARBONATE	BLACK
NY-S6-7	.118	.408	.067	.108	.062	.025	POLYCARBONATE	BLACK
NY-S6-8	.118	.408	.067	.108	.062	.025	POLYCARBONATE	WHITE
NY-S6-9	.462	.762	.067	.108	.062	.031	POLYCARBONATE	BLACK
NY-S6-10	.462	.762	.067	.108	.062	.031	POLYCARBONATE	WHITE
NY-S6-11	.499	.833	.067	.150	.062	.031	POLYCARBONATE	BLACK
NY-S6-12	.499	.833	.067	.150	.062	.031	POLYCARBONATE	WHITE
NY-S6-13	.157	.530	.093	.150	.072	.027	POLYCARBONATE	BLACK
NY-S6-14	.157	.530	.093	.150	.072	.027	POLYCARBONATE	WHITE
NY-S6-15	.466	.833	.100	.150	.062	.031	POLYCARBONATE	BLACK
NY-S6-16	.466	.833	.100	.150	.062	.031	POLYCARBONATE	WHITE
NY-S6-17	.512	.841	.077	.150	.062	.030	POLYCARBONATE	BLACK
NY-S6-18	.512	.841	.077	.150	.062	.030	POLYCARBONATE	WHITE
NY-S6-19	.313	.669	.062	.150	.099	.030	POLYCARBONATE	BLACK
NY-S6-20	.313	.669	.062	.150	.099	.030	POLYCARBONATE	WHITE
NY-S6-21	.200	.513	.093	.108	.062	.030	POLYCARBONATE	BLACK
NY-S6-22	.200	.513	.093	.108	.062	.030	POLYCARBONATE	WHITE
NY-S6-23	.394	.744	.066	.150	.084	.035	POLYCARBONATE	BLACK
NY-S6-24	.394	.744	.066	.150	.084	.035	POLYCARBONATE	WHITE
NY-S6-25	.511	.884	.066	.150	.092	.035	POLYCARBONATE	BLACK
NY-S6-26	.511	.884	.066	.150	.092	.035	POLYCARBONATE	WHITE
NY-S6-27	.512	.895	.090	.150	.093	.030	POLYCARBONATE	BLACK
NY-S6-28	.512	.895	.090	.150	.093	.030	POLYCARBONATE	WHITE
NY-S6-29	.209	.544	.067	.150	.062	.025	POLYCARBONATE	BLACK
NY-S6-30	.209	.544	.067	.150	.062	.025	POLYCARBONATE	WHITE
NY-S6-31	.438	.770	.062	.150	.070	.030	POLYCARBONATE	BLACK
NY-S6-32	.438	.770	.062	.150	.070	.030	POLYCARBONATE	WHITE



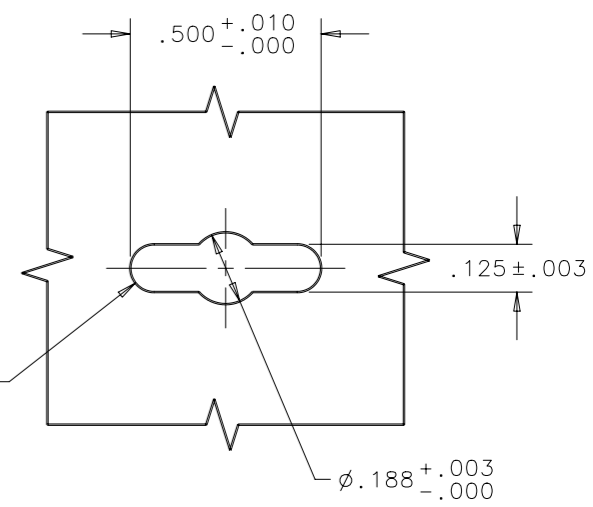
LOCKED POSITION



UNLOCKED POSITION



FIXED PANEL HOLE PREPARATION



REMOVABLE PANEL HOLE PREPARATION

