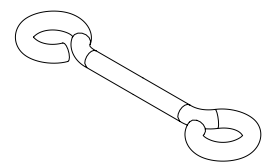
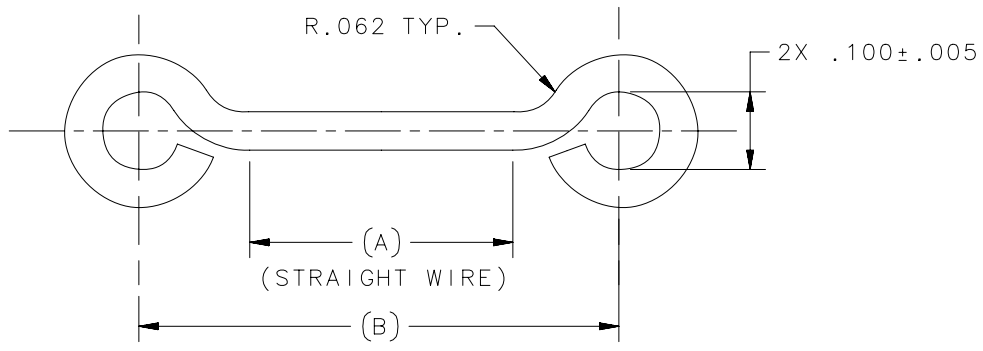
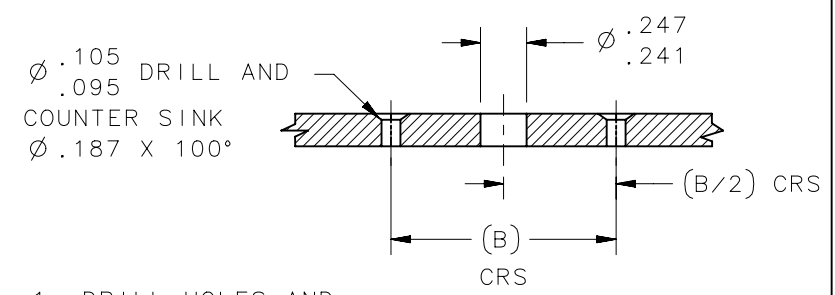


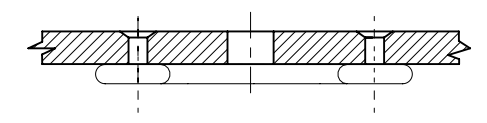
REVISION HISTORY			
REV	DATE	BY	DESCRIPTION
B	27JUL2015	CMS/NJF	PRN: P2015-1522



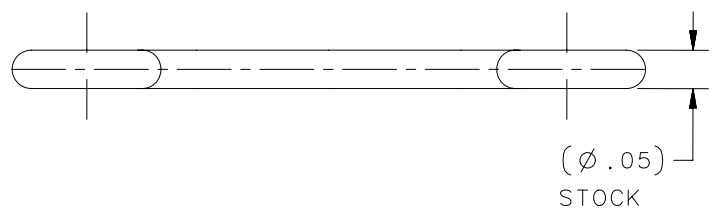
SCALE 2:1



1. DRILL HOLES AND COUNTERSINK RIVET HOLES



2. RIVET WIRE TO SUPPORT



WIRE RECEPTACLE INSTALLATION

- NOTES:
1. REMOVE ALL BURRS AND BREAK SHARP CORNERS.
 2. AFTER HEAT TREATING, PARTS MUST BE CLEAN WITH MINERAL SPIRIT AND THEN POLISH.
 3. FINISH NICKEL FLASH PER QQ-N-290, CL, I AND CADMIUM PLATE PER QQ-P-416, TYPE I, CLASS 2, CLEAR CHROMATE.
 4. BAKE FOR HYDROGEN EMBRITTLEMENT WITHIN 4 HOURS AFTER PLATING PER QQ-P-416.
 5. MATERIAL:
17-7 PH COND C. SS PER AMS-5678 THEN HARDENED TO ROCKWELL C39-43 OR
17-7 PH COND A. SS PER AMS-5678, THEN HARDENED TO TH1050 C38 MIN.

D5-PB35-2SSNA	3502-2-SS	BA2-002-2990	.719	1.000	SEE NOTE 5	SEE NOTE 2
D5-PB35-1SSCNCNA	3502-1-SS-C3NC	BA2-922-2480	.344	.625	SEE NOTE 5	SEE NOTES 2,3 & 4
D5-PB35SSNA	3502-SS	BA2-000-2990	.344	.625	SEE NOTE 5	SEE NOTE 2
SOUTHCO PART NUMBER	DFCI PART NUMBER	C.O.C #	A	B	MATERIAL	FINISH

THIRD ANGLE PROJECTION		 CONNECT • CREATE • INNOVATE					
INCHES [MM]							
TOLERANCES UNLESS OTHERWISE NOTED		DESCRIPTION PA-3500 WIRE RECEPTACLE, 3502-SS					
SURFACE AREA		SIZE A		SYSTEM NX		DWG NO. J-D5-PB35NA	
VOLUME		DRAWN BY GKW/YGC		DATE 09APR2015		SHEET 1 OF 1	
PROPRIETARY ITEM <small>EXCEPT FOR USES EXPRESSLY GRANTED IN WRITING, INFORMATION DISCLOSED HEREON IS CONFIDENTIAL AND ALL RIGHTS, PATENT AND OTHERWISE, ARE RESERVED BY SOUTHCO, INC.</small>		PER ASME Y14.5M-1994		SCALE 4:1		SHEET 1 OF 1	