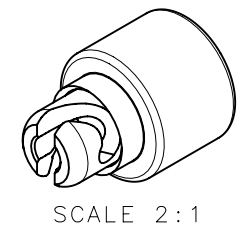
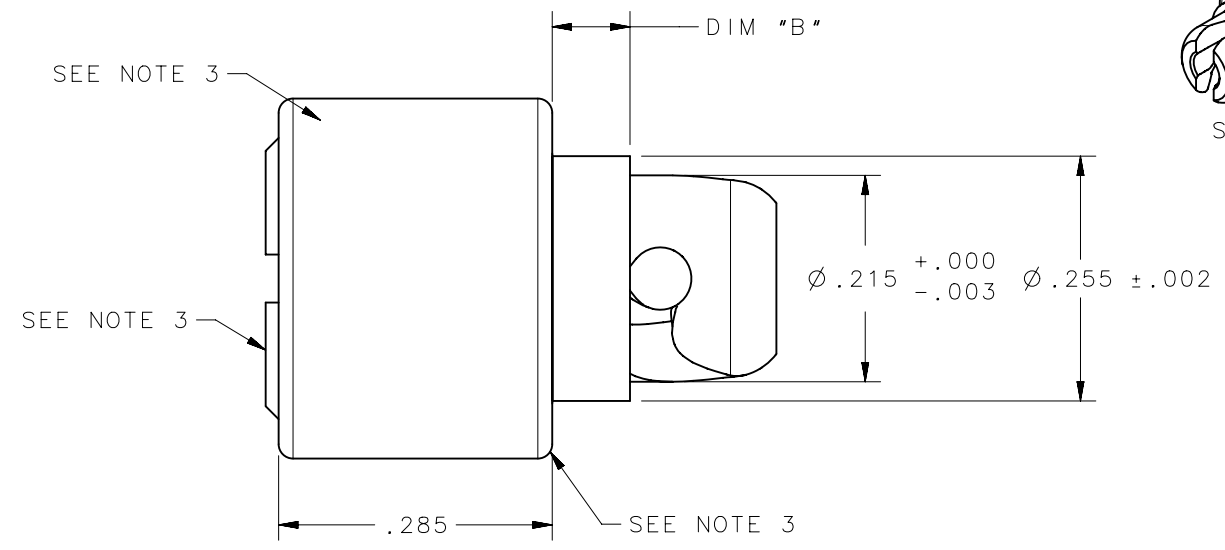
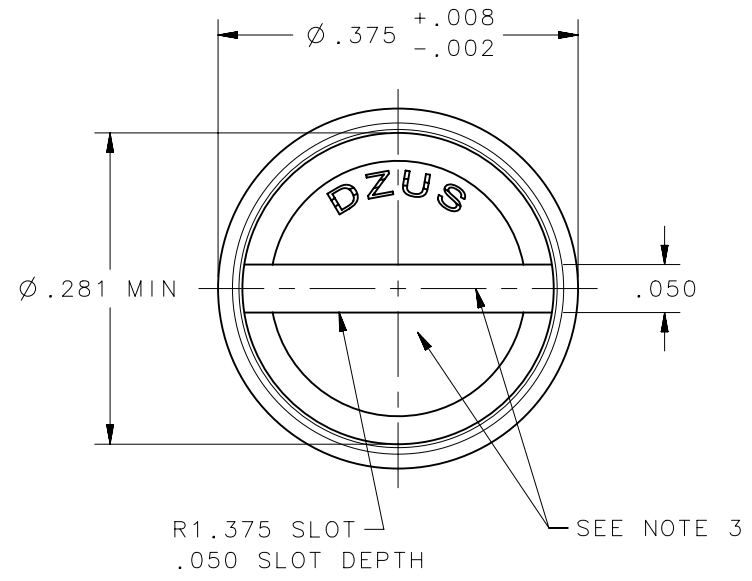
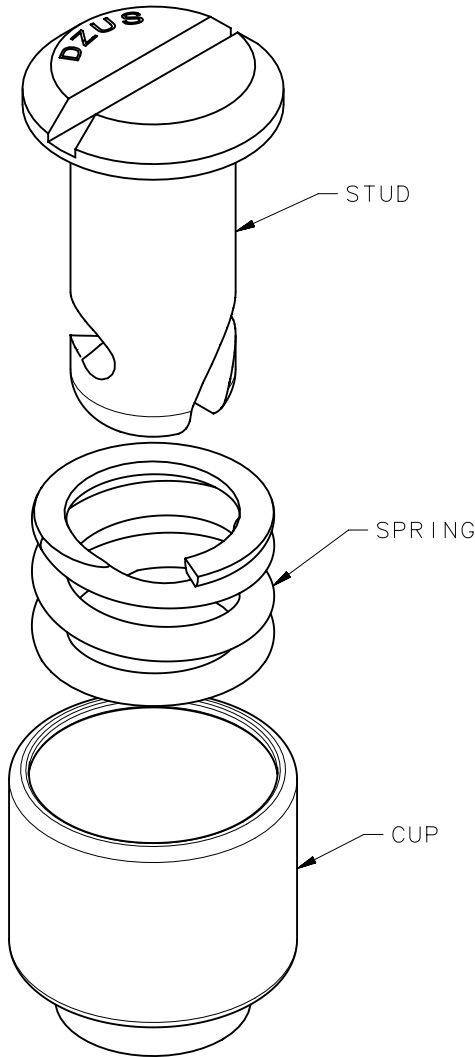
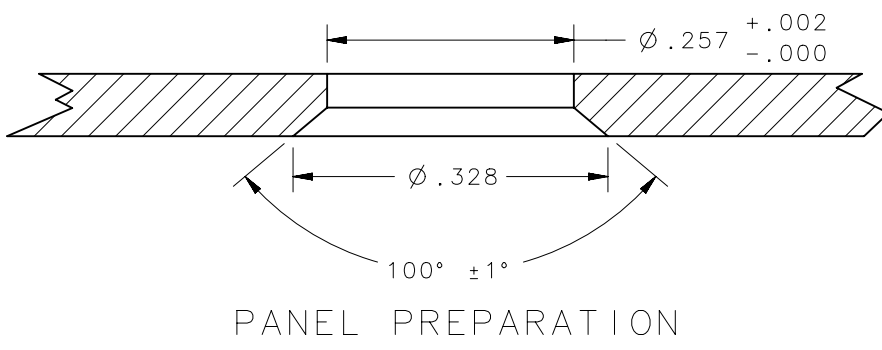


REVISION HISTORY			
REV	DATE	BY	DESCRIPTION
H	23JAN2017	DKM/YGC	PRN: P2017-0187



INSTALLATION:
 1. FLARE THE END OF THE CUP NECK INTO A COUNTERSUNK PANEL HOLE AS SHOWN.
 2. TURN STUD TO LOCK INTO RECEPTCLE.



SEE SHEET 2 FOR ADDITIONAL PART NUMBERS

DFCI PART NUMBER	SOUTHCO PART NUMBER	DIM "B"	PANEL THICKNESS
3501-44-241659-4EEGX	D5PA3544X16594GXNA	0.140	.120 - .129
3501-38-241659-1ETB	D5PA3538X16591TBNA	0.080	
3501-38-241659-1SGMX	D5PA3538X16591SXNA	0.080	
3501-40-241659-2SGMX	D5PA3540X16592SXNA	0.080	
3501-40-241659-3SGMX	D5PA3540X16593SXNA	0.080	
3501-40-241659-4SGMX	D5PA3540X16594SXNA	0.080	
3501-38-241659-1BGE1	D5PA3538X16591E1NA	0.080	
3501-38-241659-2BGE1	D5PA3538X16592E1NA	0.080	
3501-38-241659-3BGE1	D5PA3538X16593E1NA	0.080	
3501-38-241659-4BGE1	D5PA3538X16594E1NA	0.080	
3501-38-241659-1EEMBX	D5PA3538X16591BXNA	0.080	
3501-38-241659-2EEMBX	D5PA3538X16592BXNA	0.080	
3501-38-241659-3EEMBX	D5PA3538X16593BXNA	0.080	
3501-38-241659-4EEMBX	D5PA3538X16594BXNA	0.080	
3501-38-241426-EEBT	D5-PA3538X1426EBT	0.080	
3501-38-241426-EEG	D5PA3538X1426SEGNA	0.080	
3501-38-241426-EEGT	D5PA3538X1426EGTNA	0.080	
3501-38-241426-EEMBT	D5-PA3538X1426BTNA	0.080	
3501-38-241426-GBL	D5PA3538X1426GBLNA	0.080	
3501-38-241426-SGMT	D5-PA3538X1426MTNA	0.080	
3501-38-241659-1BBG1	D5PA3538X16591G1NA	0.080	
3501-38-241659-1EEBX	D5PA3538X16591SEBX	0.080	
3501-38-241659-1EEGX	D5PA3538X16591GXNA	0.080	
3501-38-241659-1EEMBX	D5-PA3538X16591MBX	0.080	
3501-38-241659-1FGE	D5PA3538X16591GENA	0.080	
3501-38-241659-1GBL	D5-PA3538X16591GBL	0.080	
3501-38-241659-1ETG	D5-PA3538X16591GNA	0.080	
3501-43-241659-5EEGX	D5PA3543X16595GXNA	0.080	
DFCI PART NUMBER	SOUTHCO PART NUMBER	DIM "B"	PANEL THICKNESS

NOTES:
 1. SEE J-D5-0-3 FOR FINISH INFORMATION.
 2. MATERIAL:
 STUD: AISI 4037 OR 8620 STEEL, HARDENED TO ROCKWELL C30-38.
 4037 (HEADED)
 8620 (TURNED)
 CUP: AISI 1008, 1010, 1215 OR 8620 STEEL.
 1008/1010/1215 (STAMPED)
 8620 (TURNED)
 SPRING: MUSIC WIRE PER ASTM A228
 3. COATING ARE APPLIED TO THESE SURFACES AND ARE VISIBLE AFTER INSTALLATION.

CAGE CODE	72794	THIRD ANGLE PROJECTION		
INCHES [MM]		DESCRIPTION		
TOLERANCES UNLESS OTHERWISE NOTED		LINE STUD ASSEMBLY		
X° ±2°		SIZE	SYSTEM	DWG NO.
X/X ±1/32		B	NX	J-D5-PA35XNA
.XX ±.015		DRAWN BY		
.XXX ±.010		CMS/NJF		
PER ASME Y14.5M-1994		DATE	SCALE	SHEET
		10JUN2015	5:1	1 OF 2

6

5

4

3

2

1

6

5

4

3

2

1

6

5

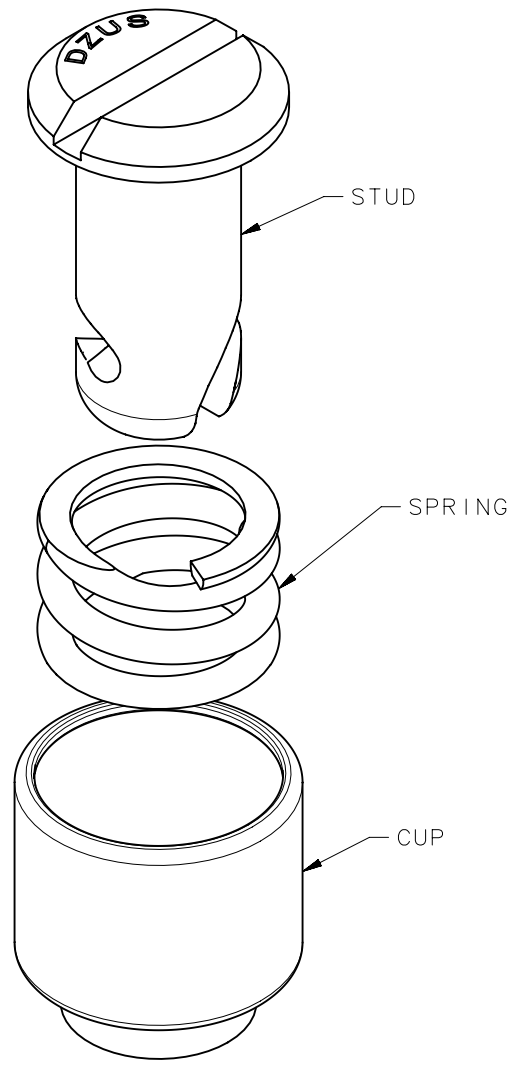
4

3

2

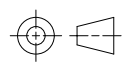
1

REVISION HISTORY			
REV	DATE	BY	DESCRIPTION
H	27JAN2017	DKM/YGC	PRN: P2017-0187



SCALE 4:1

3501-44-241659-4ETG	D5-PA3544X16594GNA	.140	.120 - .129
3501-40-241659-2EEBX	D5PA3540X16592SEBX	.100	.080 - .089
3501-40-241659-2EEGX	D5PA3540X16592GXNA		
3501-40-241659-6EEBX	D5PA3540X16596SEBX	0.08	.060 - .069
3501-40-241659-6EEGX	D5PA3540X16596GXNA		
3501-42-241659-3EEBX	D5PA3542X16593SEBX	.120	.120 - .129
3501-42-241659-3EEGX	D5PA3542X16593GXNA		
3501-43-241659-5EEBX	D5PA3543X16595SEBX	0.08	.060 - .069
3501-44-241659-4EEBX	D5PA3544X16594SEBX		
3501-44-241659-7EEBX	D5PA3544X16597SEBX	.140	.120 - .129
DFCI PART NUMBER	SOUTHCO PART NUMBER	DIM "B"	PANEL THICKNESS

CAGE CODE	72794	THIRD ANGLE PROJECTION	 southco [®] CONNECT • CREATE • INNOVATE	
		INCHES [MM]		
		TOLERANCES UNLESS OTHERWISE NOTED	DESCRIPTION	
		X° ±2°	LINE STUD ASSEMBLY	
		X/X ±1/32	SIZE	SYSTEM
		.XX ±.015	B	NX
		.XXX ±.010	DWG NO.	J-D5-PA35XNA
<small>PROPRIETARY ITEM EXCEPT FOR USES EXPRESSLY GRANTED IN WRITING, INFORMATION DISCLOSED HEREON IS CONFIDENTIAL AND ALL RIGHTS, PATENT AND OTHERWISE, ARE RESERVED BY SOUTHCO, INC.</small>		PER ASME Y14.5M-1994	DRAWN BY	DATE
			CMS/NJF	10JUN2015
			SCALE	SHEET
			1:1	2 OF 2

6

5

4

3

2

1