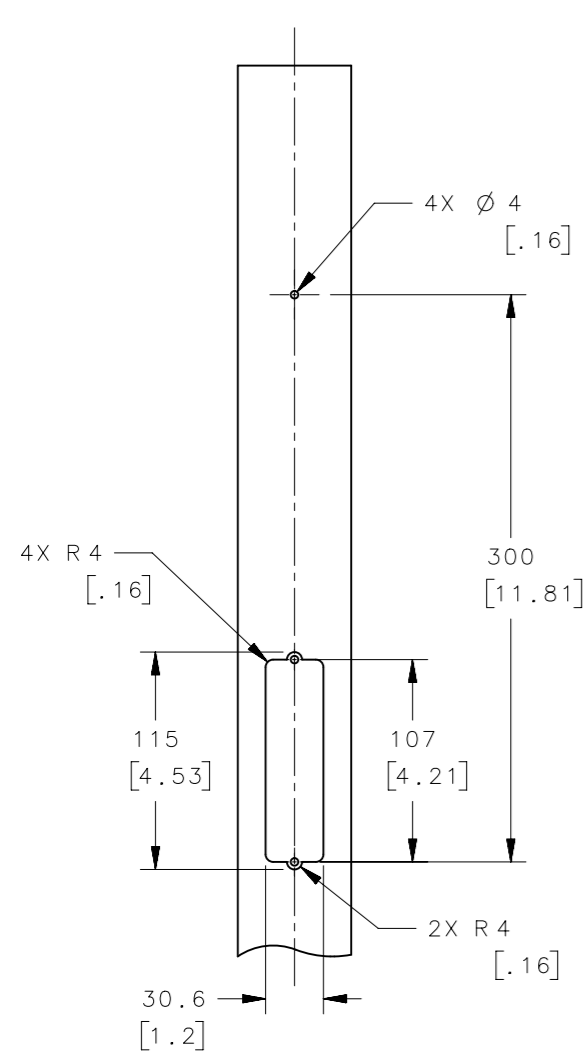
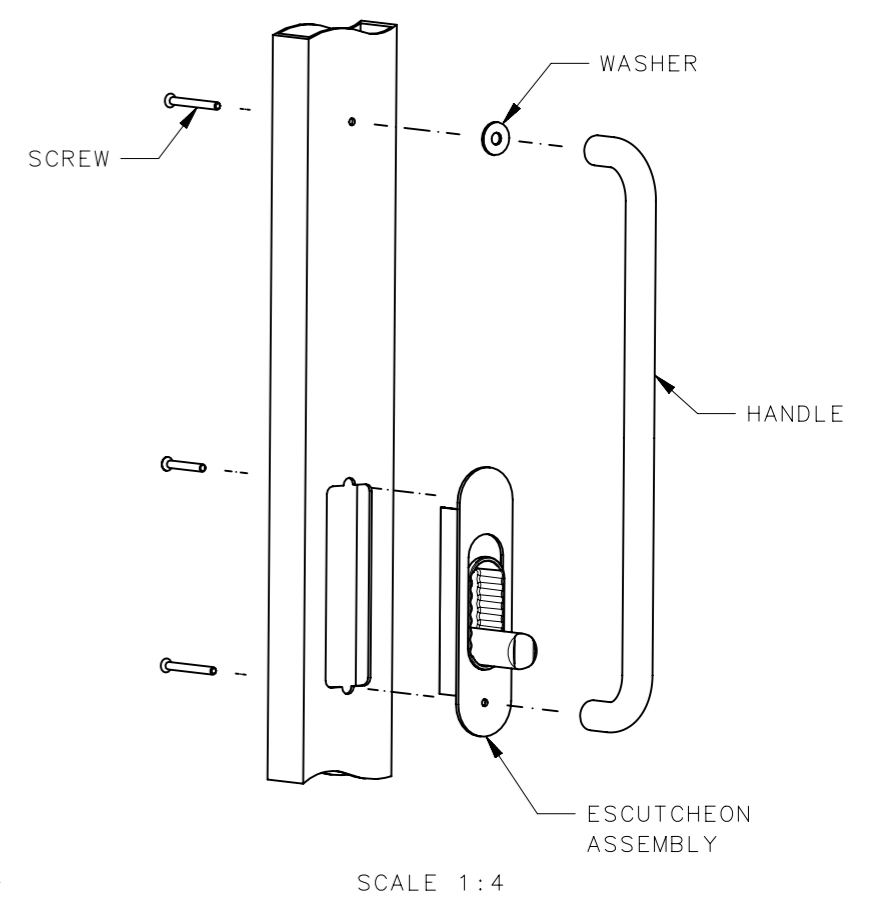
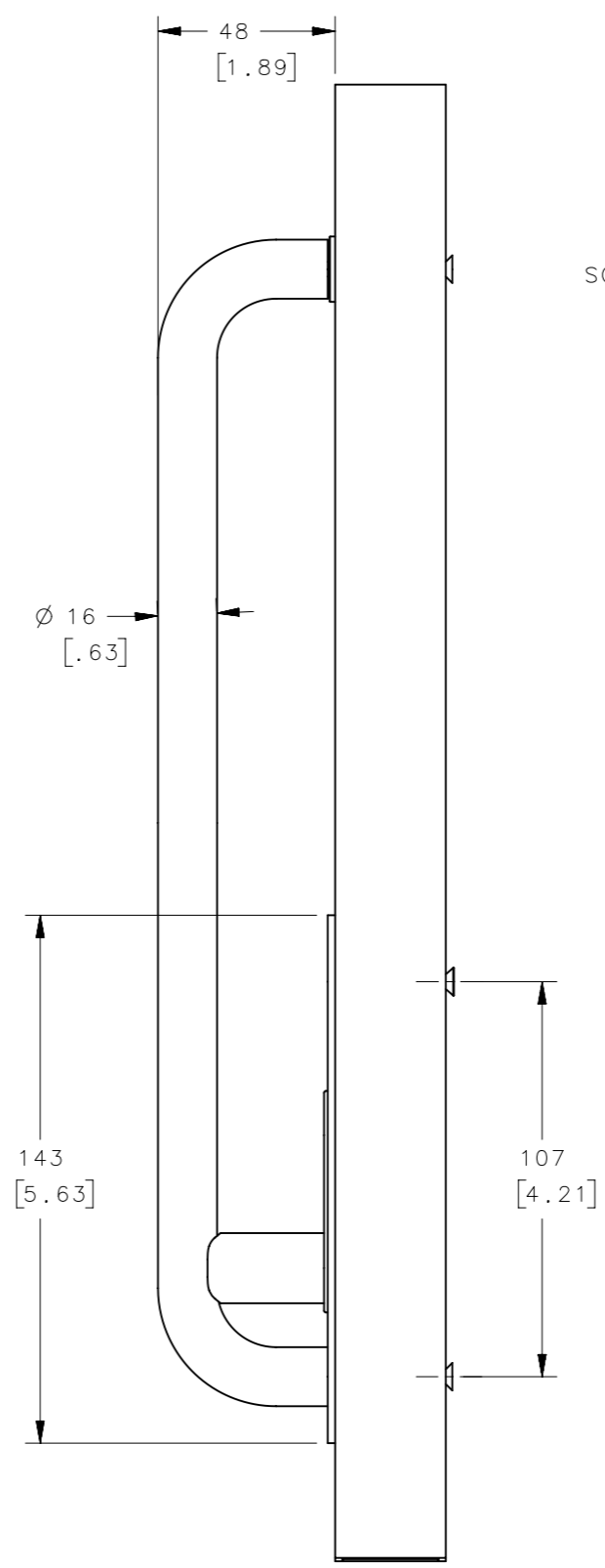
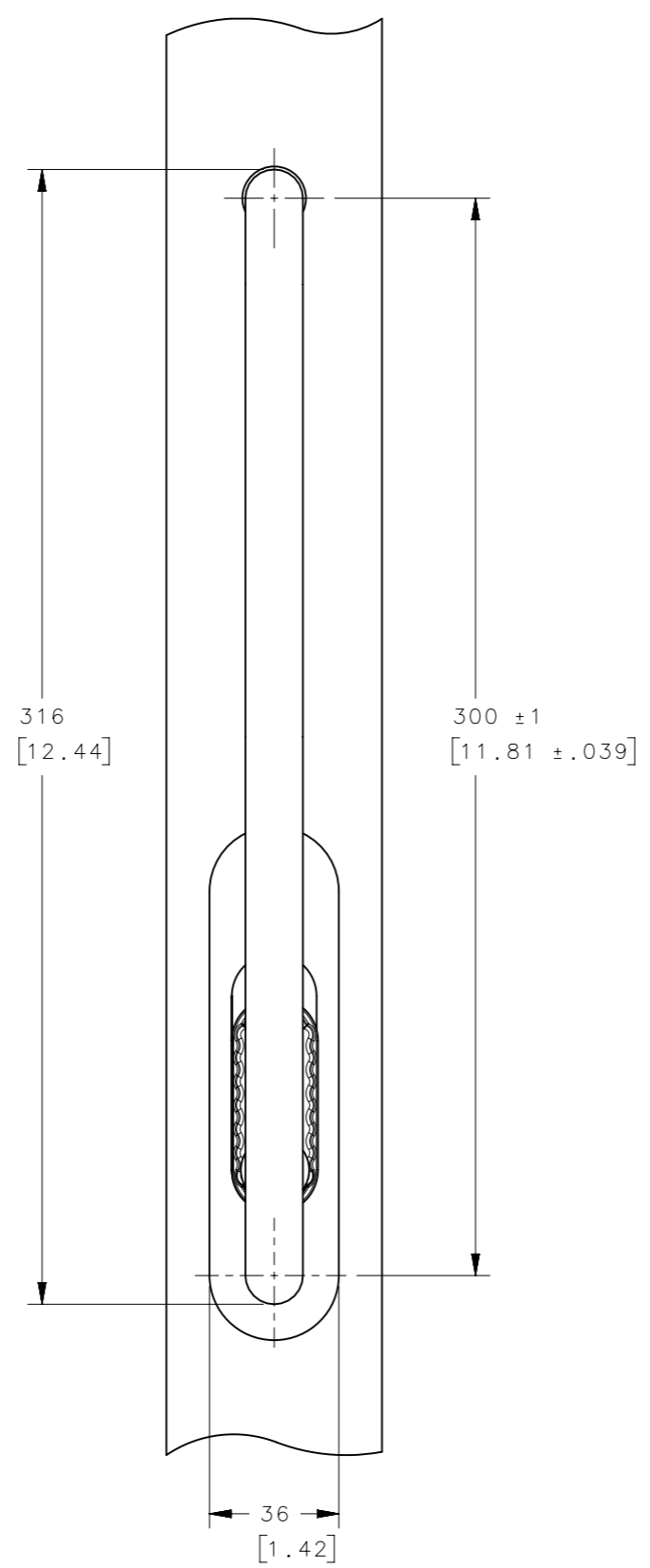


REVISION HISTORY			
REV	DATE	BY	DESCRIPTION
B	19MAR2018	ANT/MGG	PRN: P2018-0694



PANEL PREPERATION
SCALE 1:4



- NOTES:
- SEE SOUTHCO MARINE HANDBOOK FOR MORE DETAILED INSTRUCTIONS.
 - MATERIALS AND FINISH
HANDLE: STAINLESS STEEL, CHROME
ESCUTCHEON ASSEMBLY:
ESCUTCHEON: ALUMINIUM, BLACK.
HANDLE KNOB: ACETAL, BLACK.
HANDLE: PA6.6 OR EQUIVALENT, BLACK.
WASHER AND SCREWS: STAINLESS STEEL.
 - SELECT SCREWS APPROPRIATE FOR DOOR THICKNESS AND DISCARD REMAINING SCREWS.

MM-7683	HANDLE KIT FOR BLACK TALON	SEE NOTE 2	SEE NOTE 2
PART NUMBER	TYPE OF COMPONENT	MATERIAL	FINISH
THIRD ANGLE PROJECTION		 CONNECT • CREATE • INNOVATE	
MILLIMETERS [IN]			
TOLERANCES UNLESS OTHERWISE NOTED		DESCRIPTION	
ALL DIMENSIONS WITHOUT TOLERANCES ARE FOR REFERENCE ONLY.		HANDLE KIT HIGH SEAS HANDLE FOR BLACK TALON	
PROPRIETARY ITEM	PER ASME Y14.5M-1994	SIZE A3	SYSTEM NX
EXCEPT FOR USES EXPRESSLY GRANTED IN WRITING, INFORMATION DISCLOSED HEREON IS CONFIDENTIAL AND ALL RIGHTS, PATENT AND OTHERWISE, ARE RESERVED BY SOUTHCO, INC.		DWG NO. J-MM-7683	DATE 17JUN2014
DRAWN BY DMS/YGC		SCALE 1:2	SHEET 1 OF 1