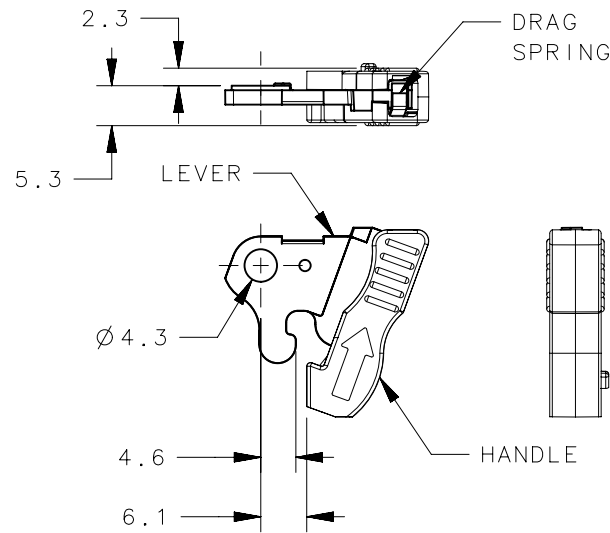
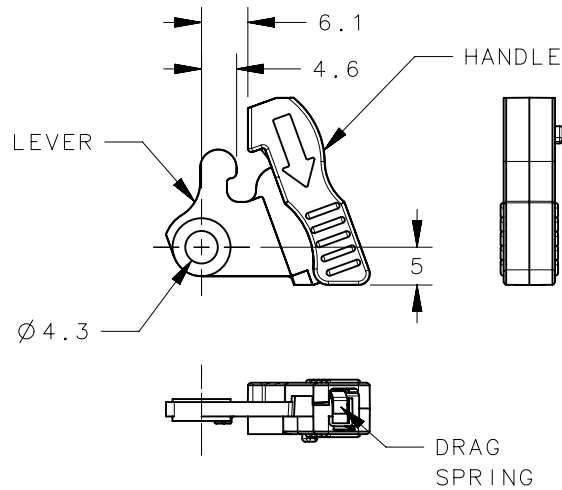
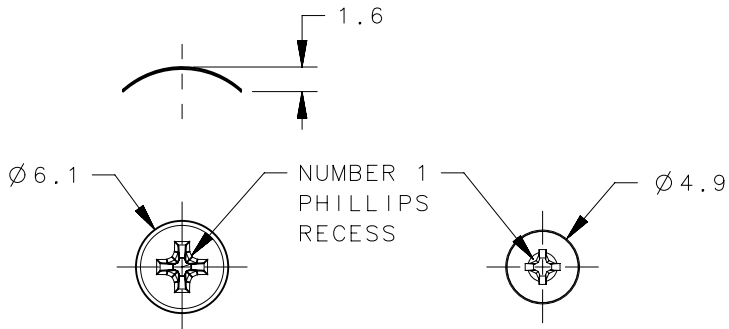
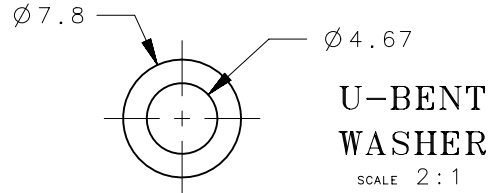


UPPER HANDLE ASSEMBLY



LOWER HANDLE ASSEMBLY



PIVOT SCREW

SCALE 2:1

SHOULDER SCREW

SCALE 2:1

NOTES:

- A. THIS ASSEMBLY IS RoHS COMPLIANT.
- B. HANDLE MEETS SOUTHCO POWDER COATING COSMETIC SPECIFICATION S-121-03 CLASS B.

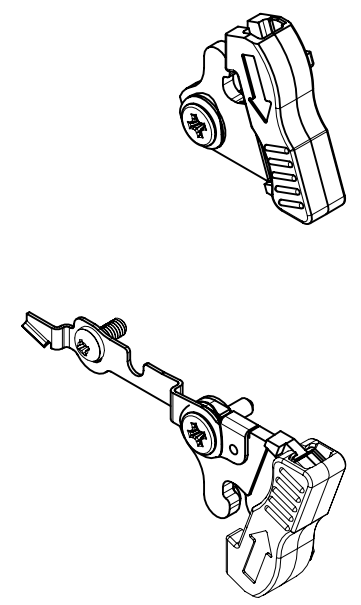
NO.	PART NUMBER	QTY	TYPE OF COMPONENT	MATERIAL	FINISH
12	P7-C-701	1	HANDLE ASSEMBLY	-	-
11	P7-2-701	1	UPPER HANDLE ASSEMBLY	-	-
10	-	1	LEVER	DIE CAST ZINC	TRIVALENT CHROMATE COATING
9	-	1	HANDLE	DIE CAST ZINC	BLACK EPOXY E-COAT
8	P7-2-702	1	LOWER HANDLE ASSEMBLY	-	-
7	-	1	HANDLE	DIE CAST ZINC	BLACK EPOXY E-COAT
6	-	1	LEVER	DIE CAST ZINC	TRIVALENT CHROMATE COATING
5	-	2	DRAG SPRING	SPRING STEEL	ZINC PLATE, BRIGHT CHROMATE COATING
4	-	2	PIVOT SCREW	LOW CARBON STEEL	ZINC PLATE, BRIGHT CHROMATE COATING
3	-	2	U-BENT WASHER	301 STAINLESS STEEL	NATURAL
2	-	1	ARM	304 STAINLESS STEEL	PASSIVATED
1	-	1	SHOULDER SCREW	430 STAINLESS STEEL	PASSIVATED

THIRD ANGLE PROJECTION		
MILLIMETERS [IN]		
TOLERANCES UNLESS OTHERWISE NOTED		
SURFACE AREA	mm ²	UP TO 0.5 ±0.1 OVER 0.5 UP TO 6 ±0.2 OVER 6 UP TO 30 ±0.4 OVER 30 ±0.6
VOLUME	mm ³	ANGLES ±5°
PROPRIETARY ITEM EXCEPT FOR USES EXPRESSLY GRANTED IN WRITING, INFORMATION DISCLOSED HEREON IS CONFIDENTIAL AND ALL RIGHTS, PATENT AND OTHERWISE, ARE RESERVED BY SOUTHCO, INC.		
PER ASME Y14.5M-1994		

CONNECT • CREATE • INNOVATE

DESCRIPTION			
INJECT/EJECT MECHANISM AMC CARRIER EJECTOR			
SIZE	SYSTEM	DWG NO.	
A4	NX	J-P7-C-701	
DRAWN BY	DATE	SCALE	SHEET
RES	21NOV2005	1:1	1 OF 4

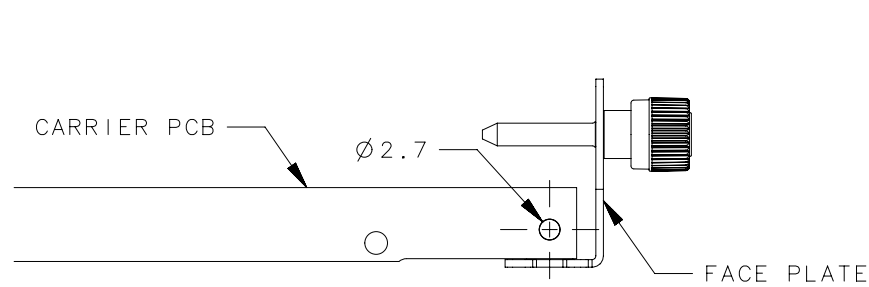
REVISION HISTORY			
REV	DATE	BY	DESCRIPTION
D	23JAN2018	MJS/RES	PRN: P2018-0203



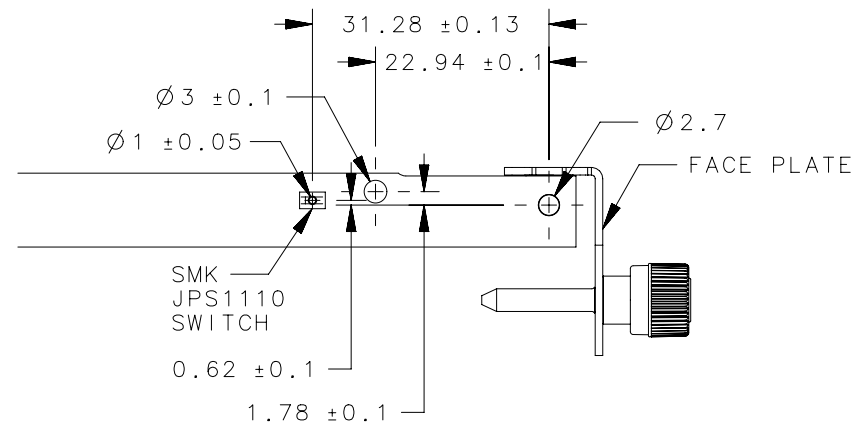
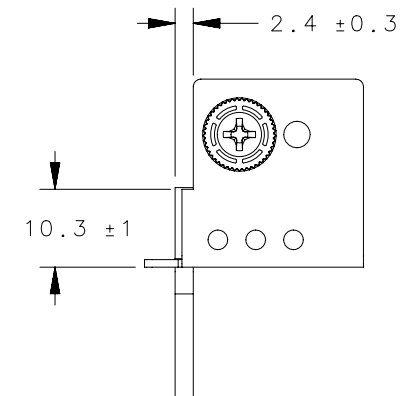
REVISION HISTORY			
REV	DATE	BY	DESCRIPTION
D	23JAN2018	MJS/RES	PRN: P2018-0203

PANEL PREPARATION

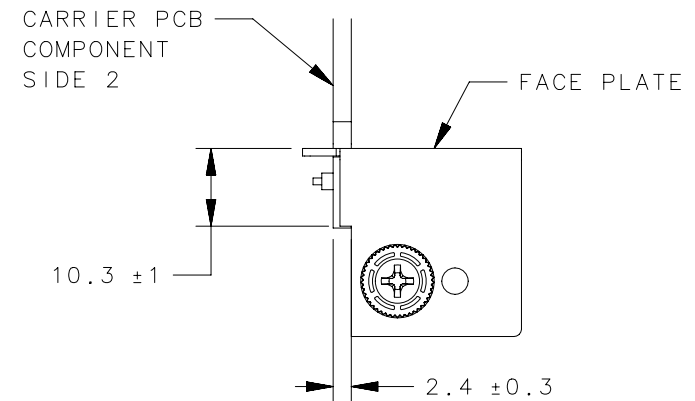
FOR USE WITH CARRIERS SUPPORTING
4 FULL-SIZE AMC MODULES



UPPER LATCH LOCATION



LOWER LATCH LOCATION

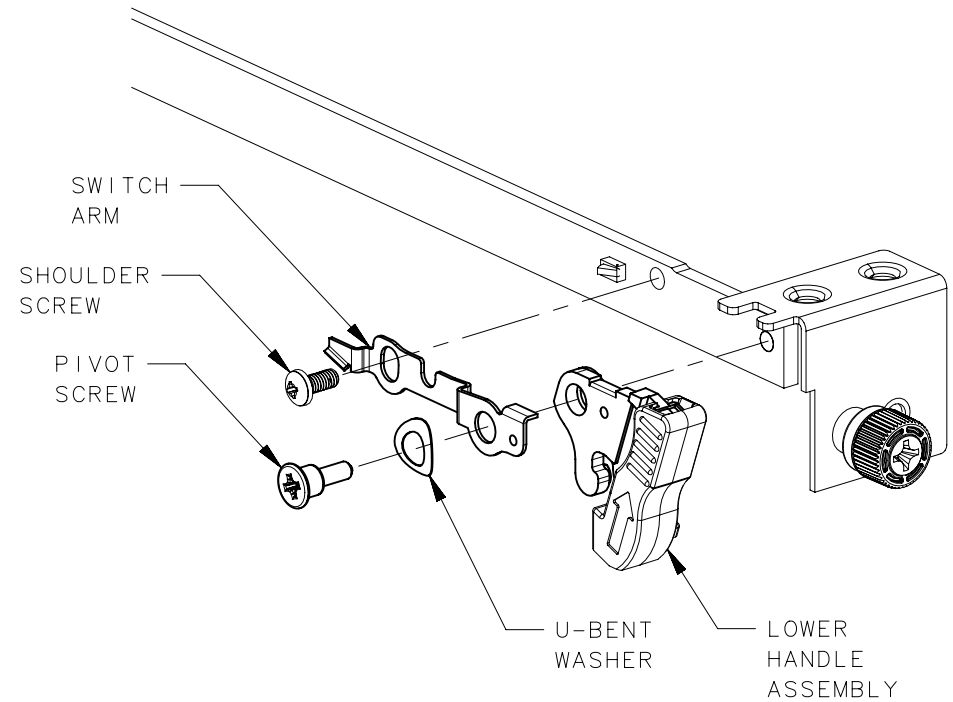
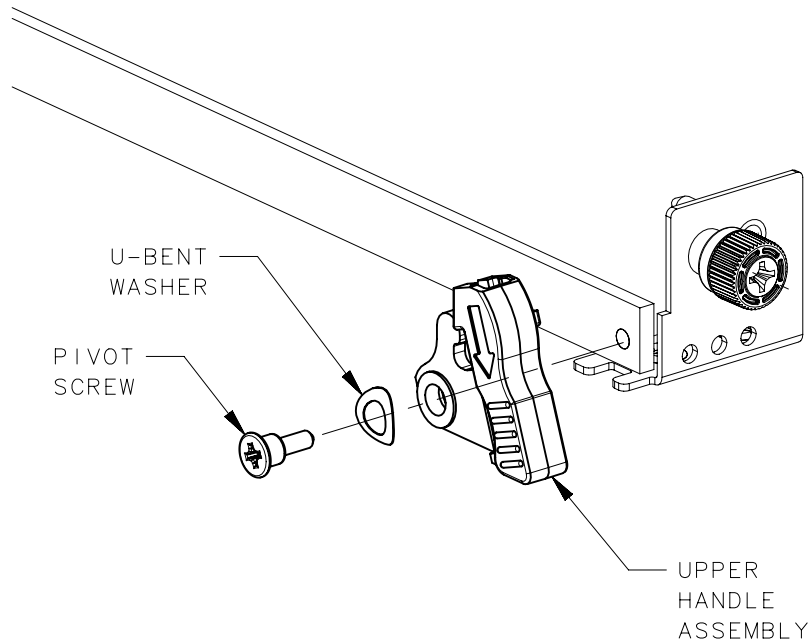


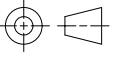
	THIRD ANGLE PROJECTION					 CONNECT • CREATE • INNOVATE			
	MILLIMETERS [IN]								
	TOLERANCES UNLESS OTHERWISE NOTED	DESCRIPTION							
SURFACE AREA	mm ²	UP TO 0.5	± 0.1	INJECT/EJECT MECHANISM					
VOLUME	mm ³	OVER 0.5 UP TO 6	± 0.2	AMC CARRIER EJECTOR					
		OVER 6 UP TO 30	± 0.4	SIZE	SYSTEM	DWG NO.			
		OVER 30	± 0.6	A4	NX	J-P7-C-701			
		ANGLES	± 5°	PER ASME Y14.5M-1994	DRAWN BY	DATE	SCALE	SHEET	
					RES	21NOV2005	1:1	2 OF 4	

PROPRIETARY ITEM
EXCEPT FOR USES EXPRESSLY GRANTED
IN WRITING, INFORMATION DISCLOSED
HEREON IS CONFIDENTIAL AND ALL
RIGHTS, PATENT AND OTHERWISE,
ARE RESERVED BY SOUTHCO, INC.

REVISION HISTORY			
REV	DATE	BY	DESCRIPTION
D	23JAN2018	MJS/RES	PRN: P2018-0203

INSTALLATION

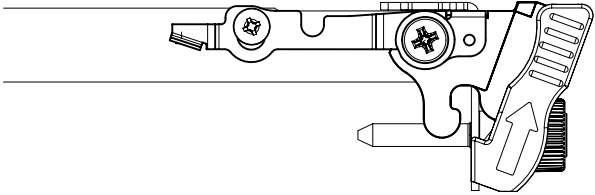


		THIRD ANGLE PROJECTION			<p style="text-align: center;">southco[®]</p> <p style="text-align: center;">CONNECT • CREATE • INNOVATE</p>						
		MILLIMETERS [IN]									
SURFACE AREA		<small>TOLERANCES UNLESS OTHERWISE NOTED</small> UP TO 0.5 ±0.1 OVER 0.5 UP TO 6 ±0.2 OVER 6 UP TO 30 ±0.4 OVER 30 ±0.6 ANGLES ±5°	DESCRIPTION		INJECT/EJECT MECHANISM						
VOLUME			AMC CARRIER EJECTOR								
PROPRIETARY ITEM			SIZE	SYSTEM	DWG NO.						
EXCEPT FOR USES EXPRESSLY GRANTED IN WRITING, INFORMATION DISCLOSED HEREON IS CONFIDENTIAL AND ALL RIGHTS, PATENT AND OTHERWISE, ARE RESERVED BY SOUTHCO, INC.			A4	NX	J-P7-C-701						
TIGHTEN SCREWS TO 45 - 60 Ncm.		PER ASME Y14.5M-1994		DRAWN BY	RES	DATE	21NOV2005	SCALE	1:1	SHEET	3 OF 4

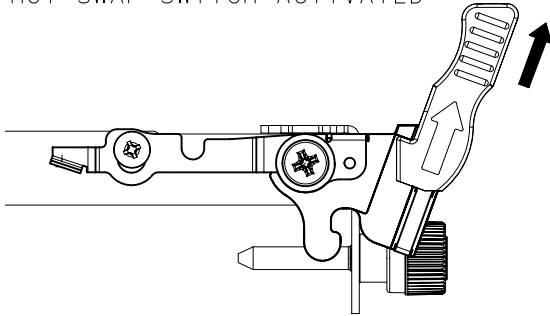
REVISION HISTORY			
REV	DATE	BY	DESCRIPTION
D	23JAN2018	MJS/RES	PRN: P2018-0203

OPERATION

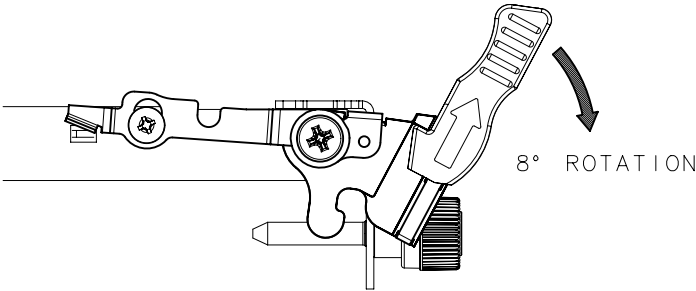
1. HANDLE STOWED, CARRIER INSERTED, HOT SWAP SWITCH ACTIVATED



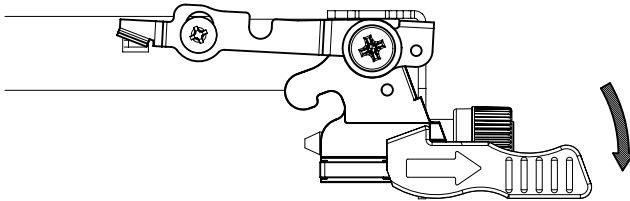
2. HANDLE EXTENDED, CARRIER INSERTED, HOT SWAP SWITCH ACTIVATED

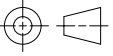


3. HANDLE EXTENDED, CARRIER INSERTED, HOT SWAP SWITCH DE-ACTIVATED



4. HANDLE EXTENDED, CARRIER EXTRACTED, HOT SWAP SWITCH DE-ACTIVATED



		THIRD ANGLE PROJECTION 	southco [®] CONNECT • CREATE • INNOVATE	
		MILLIMETERS [IN]		
		TOLERANCES UNLESS OTHERWISE NOTED		DESCRIPTION
SURFACE AREA	mm ²	UP TO 0.5	±0.1	INJECT/EJECT MECHANISM AMC CARRIER EJECTOR
VOLUME	mm ³	OVER 0.5 UP TO 6	±0.2	
		OVER 6 UP TO 30	±0.4	
		OVER 30	±0.6	
		ANGLES	±5°	SIZE SYSTEM DWG NO.
PROPRIETARY ITEM <small>EXCEPT FOR USES EXPRESSLY GRANTED IN WRITING, INFORMATION DISCLOSED HEREON IS CONFIDENTIAL AND ALL RIGHTS, PATENT AND OTHERWISE, ARE RESERVED BY SOUTHCO, INC.</small>		PER ASME Y14.5M-1994	A4 NX	J-P7-C-701
		DRAWN BY RES	DATE 21NOV2005	SCALE 1:1 SHEET 4 OF 4