

NOTES

1. ALL COMPONENTS ARE RoHS AND REACH COMPLIANT.
2. OPERATION: 195° TURN OF THE HANDLE CAUSES CAM TO ROTATE AND PULL UP AS SHOWN.
3. DETERMINE TOTAL GRIP BY ADDING: MAX. OUTER DOOR THICKNESS (INCLUDE ALL ACCESSORIES) PLUS COMPRESSED FRAME GASKET AND FRAME THICKNESS.
4. FIND YOUR TOTAL GRIP IN GRIP TABLE AND DETERMINE IF AN ASSEMBLED OR UNASSEMBLED LATCH IS TO BE USED BASED ON OUTER DOOR THICKNESS.
5. INSTALLATION:
 - A. PLACE LATCH IN UNLATCHED POSITION THEN INSERT IT INTO HOLE IN DOOR. CHECK FOR PROPER ORIENTATION AND OPERATION OF CAM.
 - B. RECOMMENDED MOUNTING NUT (27mm ACROSS FLATS) TORQUE IS 20Nm. RECOMMENDED CAM MOUNTING SCREW IS TORQUE 10Nm.
6. RECOMMENDED SHACKLE SPECIFICATIONS:
 - (A)SHACKLE DIAMETER: 10mm MAX. AND 8mm MIN.
 - (B)SHACKLE CLEARANCE: 26mm MIN.
 - (C)SHACKLE WIDTH: 24mm MIN.
7. POTENTIAL AESTHETIC INCONSISTENCIES MAY ARISE DUE TO REQUIREMENT FOR MANUAL BUFFING PROCESS.
8. FOR ALTERNATIVE LATCH PACKAGING WITH CAM, SEE J-E3-12-14-A.

REVISION HISTORY			
REV	DATE	BY	DESCRIPTION
C	27OCT2016	IR/MJS	PRN: P2016-2037

LATCH PART NUMBER

E3-R H-UU12

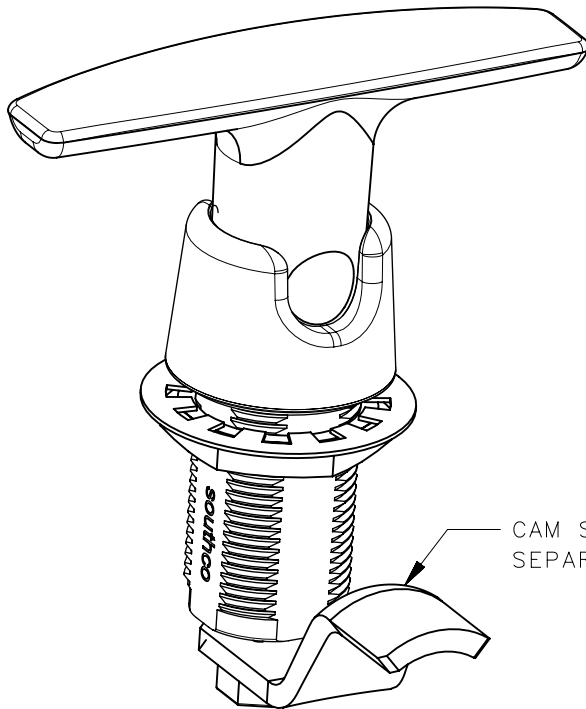
R = ROTATION

TYPE A (TURN HANDLE CLOCKWISE TO LATCH)
10 = LATCH SHIPPED ASSEMBLED,

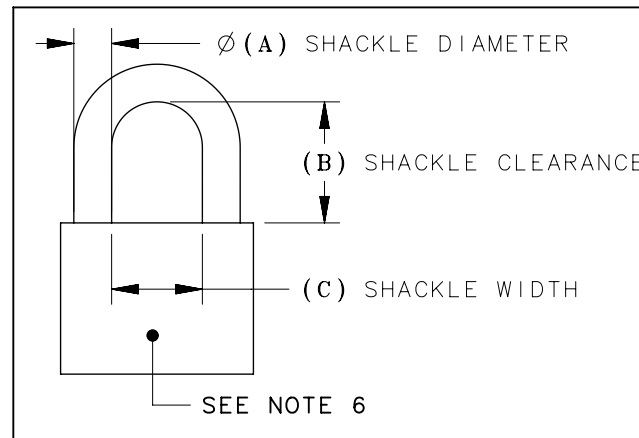
TYPE B (TURN HANDLE COUNTER-CLOCKWISE TO LATCH)
27 = LATCH SHIPPED ASSEMBLED,

H = HANDLE STYLE

1 = NON-LOCKING
60 = LOCKING



**LOCKING VERSION
ASSEMBLED LATCH**

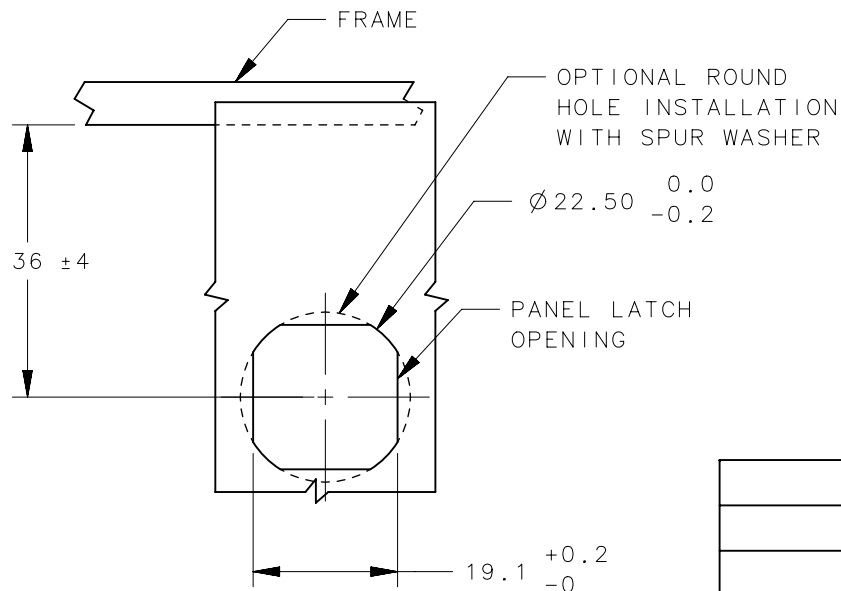
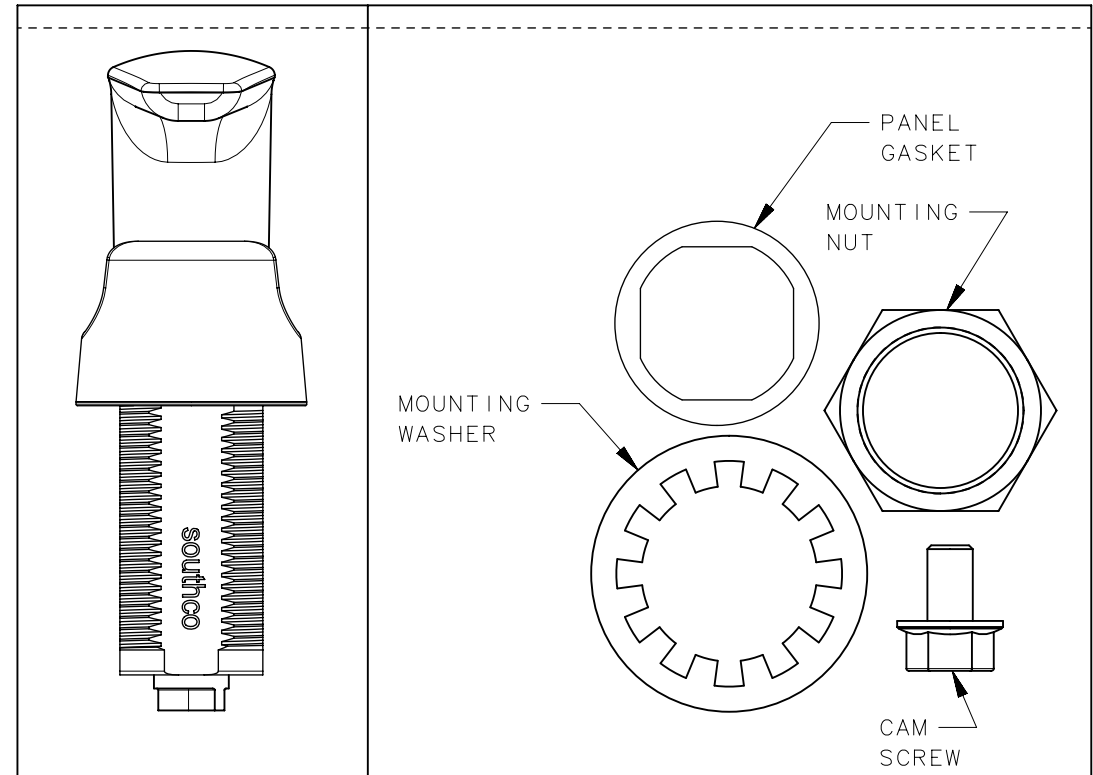


		THIRD ANGLE PROJECTION		 CONNECT • CREATE • INNOVATE	
		MILLIMETERS [IN]			
		TOLERANCES UNLESS OTHERWISE NOTED		DESCRIPTION E3 COMPRESSION LATCH, FIXED GRIP, STAINLESS STEEL	
		ALL DIMENSIONS WITHOUT TOLERANCES ARE FOR REFERENCE ONLY.		SIZE A4	SYSTEM NX
PROPRIETARY ITEM <small>EXCEPT FOR USES EXPRESSLY GRANTED IN WRITING, INFORMATION DISCLOSED HEREON IS CONFIDENTIAL AND ALL RIGHTS, PATENT AND OTHERWISE, ARE RESERVED BY SOUTHCO, INC.</small>		DWG NO. J-E3-12-14		DRAWN BY IR	
PER ASME Y14.5M-1994		DATE 06MAR2015		SCALE DNS	SHEET 1 OF 3

COMPONENT	MATERIAL	FINISH
HOUSING	CF8M	ELECTROPOLISHED
HANDLE	CF8M	ELECTROPOLISHED
RETAINER	STAINLESS	NATURAL
SPRING	STAINLESS	NATURAL
O-RING	BUNA-N	BLACK
SLEEVE	STAINLESS	PASSIVATED
INTERNAL CAM	1070 STEEL	ZINC IMMERSION COATING
SHAFT	STAINLESS	PASSIVATED
PIN	1080 STEEL	ZINC PLATE
SCREW	STAINLESS	PASSIVATED
LOCKWASHER	STAINLESS	PASSIVATED
MOUNTING NUT	STAINLESS	PASSIVATED
GASKET SEAL	NEOPRENE	BLACK
SEAL	NITRILE RUBBER	BLACK

REVISION HISTORY			
REV	DATE	BY	DESCRIPTION
C	27OCT2016	IR/MJS	PRN: P2016-2037

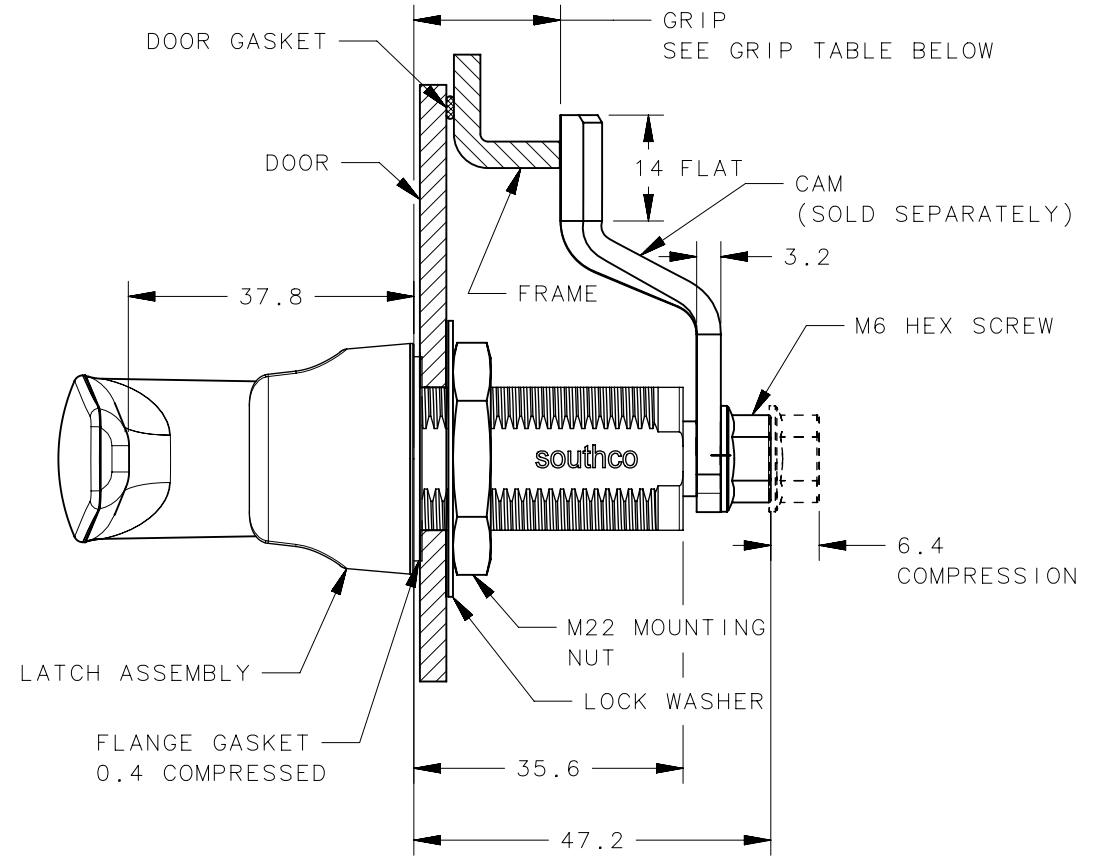
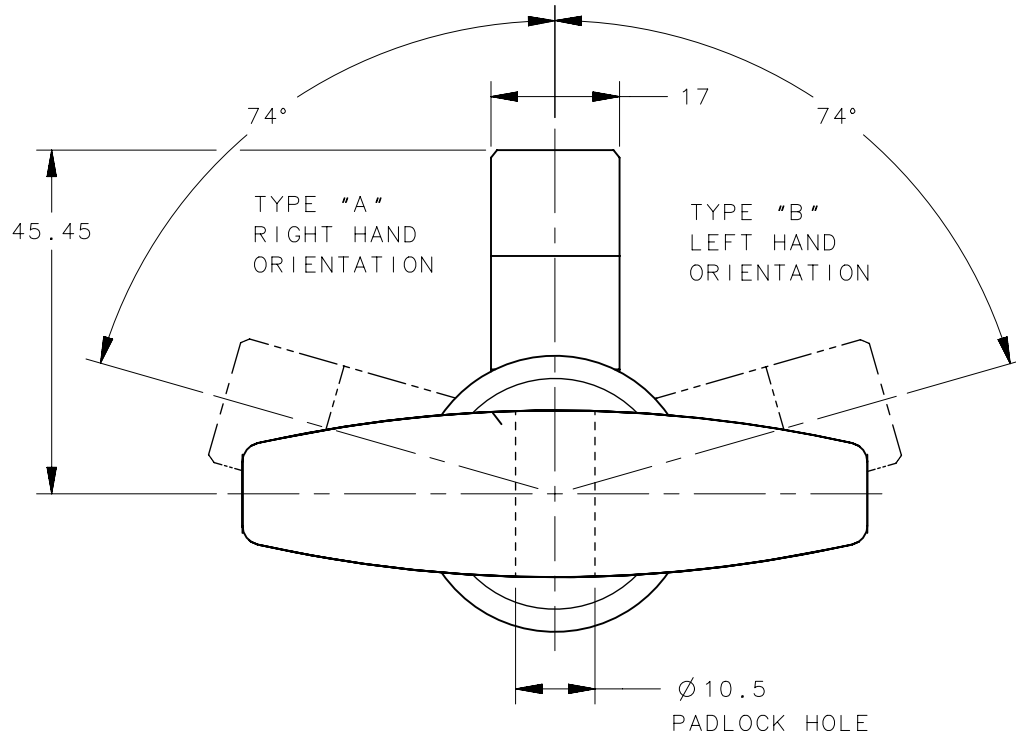
ASSEMBLED LATCH ASSEMBLY AND MOUNTING
HARDWARE IS PACKAGED AS SHOWN BELOW



PANEL PREPARATION

	THIRD ANGLE PROJECTION					southco [®] CONNECT • CREATE • INNOVATE				
	MILLIMETERS [IN]									
	TOLERANCES UNLESS OTHERWISE NOTED	DESCRIPTION				E3 COMPRESSION LATCH, FIXED GRIP, STAINLESS STEEL				
	ALL DIMENSIONS WITHOUT TOLERANCES ARE FOR REFERENCE ONLY.	SIZE	SYSTEM	DWG NO.						
	PROPRIETARY ITEM	A4	NX	J-E3-12-14						
	EXCEPT FOR USES EXPRESSLY GRANTED IN WRITING, INFORMATION DISCLOSED HEREON IS CONFIDENTIAL AND ALL RIGHTS, PATENT AND OTHERWISE, ARE RESERVED BY SOUTHCO, INC.	PER ASME Y14.5M-1994	DRAWN BY	IR	DATE	06MAR2015	SCALE	DNS	SHEET	2 OF 3

REVISION HISTORY			
REV	DATE	BY	DESCRIPTION
C	27OCT2016	IR/MJS	PRN: P2016-2037



GRIP TABLE (ORDER CAM SEPARATELY)

TOTAL GRIP	20	22	24	26	28	30	32	34	36	38	40	42	44	46	48	50	52	54	56	58
CAM PART NUMBER	E5-1200-24	E5-1201-24	E5-1202-24	E5-1203-24	E5-1204-24	E5-1205-24	E5-1206-24	E5-1207-24	E5-1208-24	E5-1209-24	E5-1210-24	E5-1211-24	E5-1212-24	E5-1213-24	E5-1214-24	E5-1215-24	E5-1216-24	E5-1217-24	E5-1218-24	E5-1219-24

<p>THIRD ANGLE PROJECTION</p> <p>MILLIMETERS [IN]</p> <p>TOLERANCES UNLESS OTHERWISE NOTED</p> <p>ALL DIMENSIONS WITHOUT TOLERANCES ARE FOR REFERENCE ONLY.</p> <p>PROPRIETARY ITEM</p> <p>EXCEPT FOR USES EXPRESSLY GRANTED IN WRITING, INFORMATION DISCLOSED HEREON IS CONFIDENTIAL AND ALL RIGHTS, PATENT AND OTHERWISE, ARE RESERVED BY SOUTHCO, INC.</p>	<p>southco[®]</p> <p>CONNECT • CREATE • INNOVATE</p>		
	<p>DESCRIPTION</p> <p>E3 COMPRESSION LATCH, FIXED GRIP,</p>		
	<p>SIZE</p> <p>A4</p>	<p>SYSTEM</p> <p>NX</p>	<p>DWG NO.</p> <p>J-E3-12-14</p>
	<p>PER ASME Y14.5M-1994</p>	<p>DRAWN BY</p> <p>IR/</p>	<p>DATE</p> <p>06MAR2015</p>
	<p>SCALE</p> <p>DNS</p>	<p>SHEET</p> <p>3 OF 3</p>	