

6

5

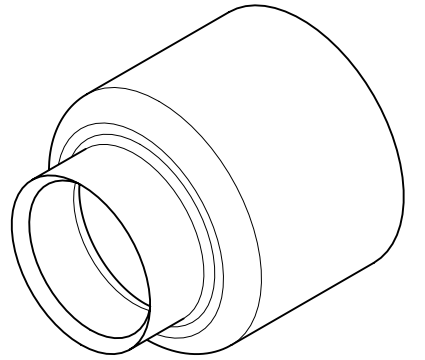
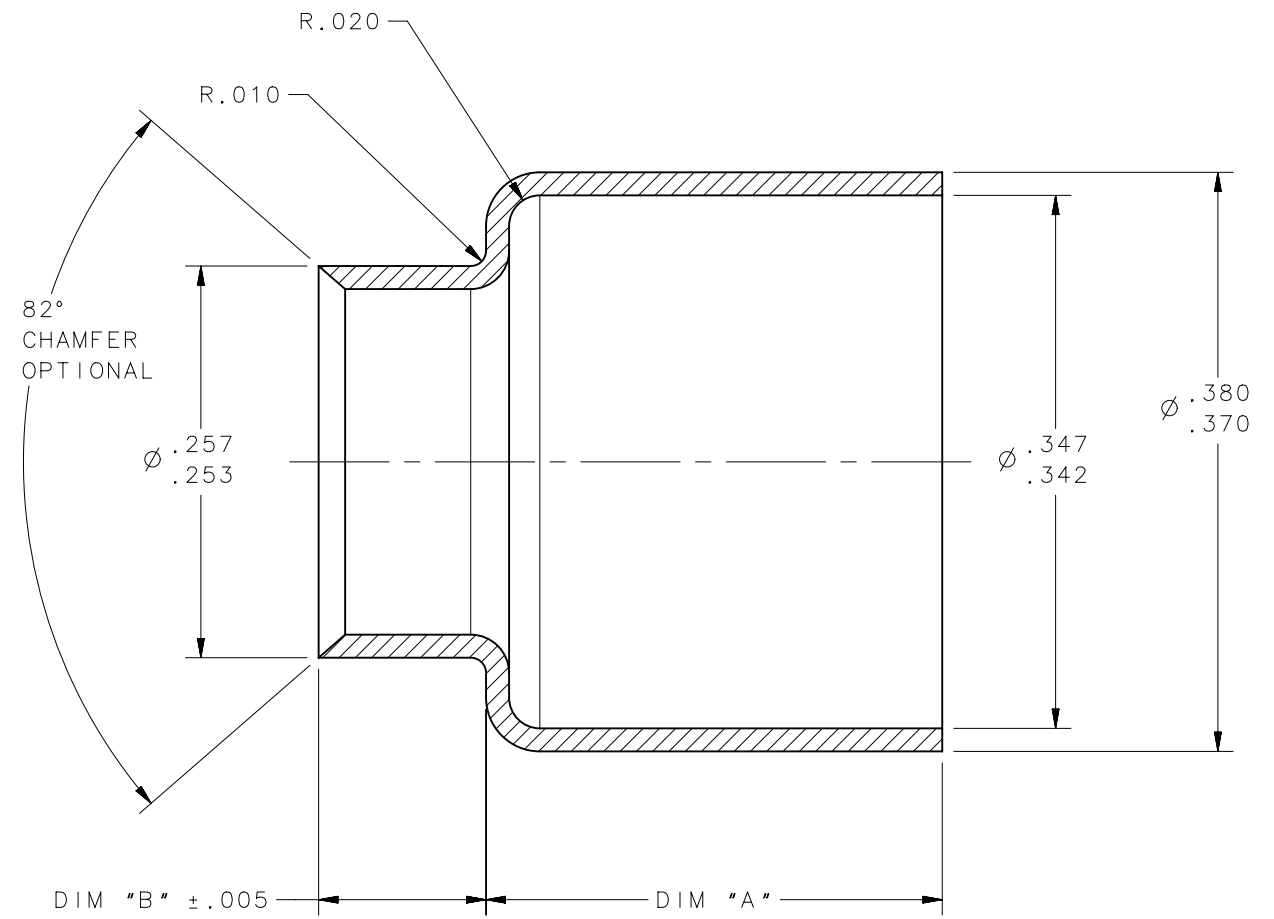
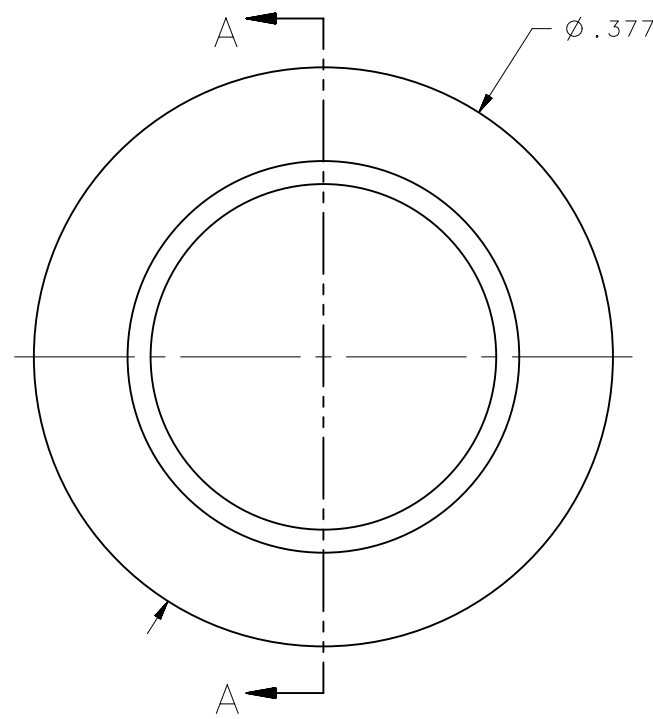
4

3

2

1

| REVISION HISTORY | | | |
|------------------|-----------|---------|-----------------|
| REV | DATE | BY | DESCRIPTION |
| B | 07OCT2015 | CMS/NJF | PRN: P2015-2029 |



SCALE 4:1

SECTION A-A

PART NUMBER D5-PC35X547-6ZCTNA SHOWN

| | | | |
|--------------------|---------------------|---------|---------|
| 3503-24547-13-Z3BT | D5-PC35X54713ZBTNA | 0.297 | 0.282 |
| 3503-24547-12-Z3BT | D5-PC35X54712ZBTNA | 0.297 | 0.140 |
| 3503-24547-11-Z3B | D5-PC35X54711ZBBNA | 0.297 | 0.220 |
| 3503-24547-12-C3C | D5-PC35X54712CBCNA | 0.297 | 0.140 |
| 3503-24547-17-Z3CT | D5-PC35X54717ZCTNA | 0.297 | 0.160 |
| 3503-24547-1-C3C | D5-PC35X547-1CBCNA | 0.755 | 0.140 |
| 3503-24547-6-BOC | D5-PC35X547-6RBNA | 0.297 | 0.109 |
| 3503-24547-6-C3C | D5-PC35X547-6CBCNA | 0.297 | 0.109 |
| 3503-24547-6-Z3BT | D5-PC35X547-6ZBTNA | 0.297 | 0.109 |
| 3503-24547-6-Z3CT | D5-PC35X547-6ZCTNA | 0.297 | 0.109 |
| 3503-24547-9-C3C | D5-PC35X547-9CBCNA | 0.297 | 0.266 |
| 3503-24547-9-C3Y | D5-PC35X547-9CBYNA | 0.297 | 0.266 |
| 3503-24547-C3Y | D5-PC35X547CBYNA | 0.63 | 0.132 |
| 3503-24547-9-Z3CT | D5-PC35X547-9ZCTNA | 0.297 | 0.266 |
| DFCI PART NUMBER | SOUTHCO PART NUMBER | DIM "A" | DIM "B" |

NOTES:

1. REMOVE ALL BURRS AND BREAK SHARP CORNERS.
2. MATERIAL: AISI 1008, 1010, 1215, 8620 STEEL OR 303 STAINLESS STEEL.
3. FINISH: SEE J-D5-0-3 FOR FINISH INFORMATION AND SPECIFICATIONS.

| | | | |
|-----------------------------------|--|-------------|-----------------|
| THIRD ANGLE PROJECTION | | | |
| INCHES [MM] | | | |
| TOLERANCES UNLESS OTHERWISE NOTED | | DESCRIPTION | |
| X° ± 2° | | CUP | |
| X/X ± 1/32 | | SIZE | SYSTEM |
| .XX ± .015 | | B | NX |
| .XXX ± .010 | | DWG NO. | J-D5-PC35X547NA |
| PER ASME Y14.5M-1994 | | DRAWN BY | CMS/JWW |
| | | DATE | 08MAY2015 |
| | | SCALE | 8:1 |
| | | SHEET | 1 OF 1 |

6

5

4

3

2

1