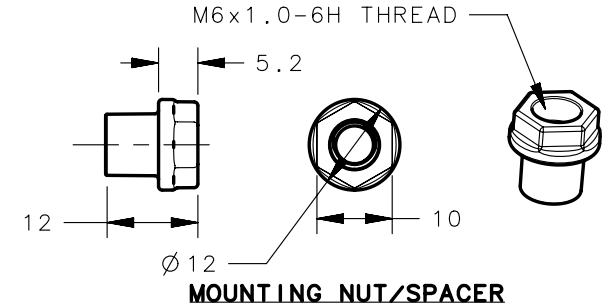


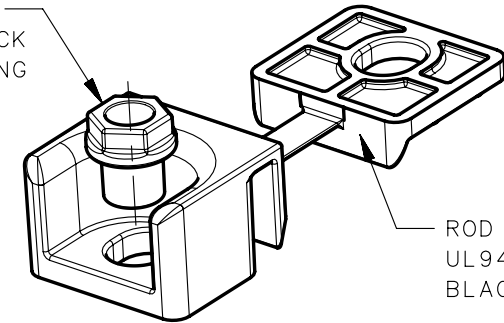
NOTES:

1. ALL MATERIALS AND FINISHES ARE RoHS COMPLIANT.
2. COSMETIC SPECIFICATION:
ALL SURFACES ARE TO CONFORM TO A CLASS "C" DESIGNATION AS DESCRIBED IN SOUTHCO COSMETIC SPECIFICATIONS:
S-121-03 FOR POWDER COATING, AND
S-121-04 FOR PLASTIC PARTS.
3. USE KIT PART NUMBER **A5-F87-101-69** (GUIDE AND MOUNTING NUT) WITH **E5** AND **#92** LATCH FAMILIES.
USE KIT PART NUMBER **A5-F87-102-69** (GUIDE, MOUNTING NUT, AND SPACER) WITH **MEDIUM #62** AND **H3** LATCH FAMILIES.

REVISION HISTORY			
REV	DATE	BY	DESCRIPTION
B	08JUL2013	MJS/IR	PRN: P2013-1316

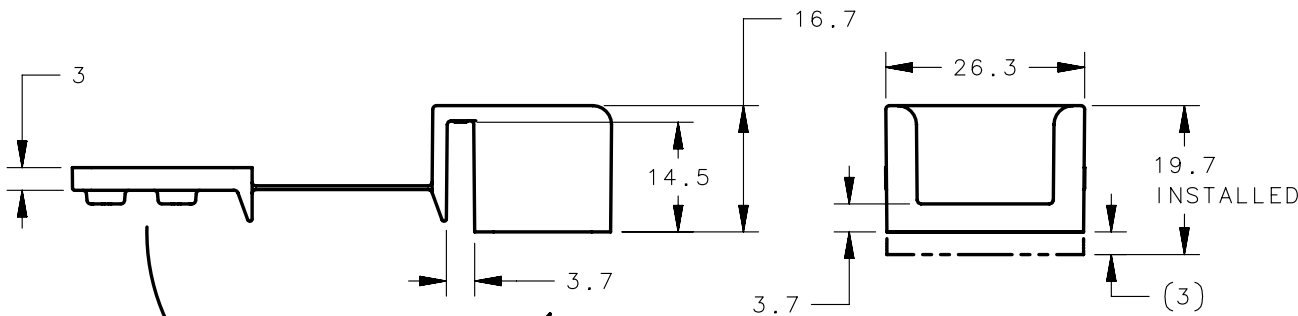
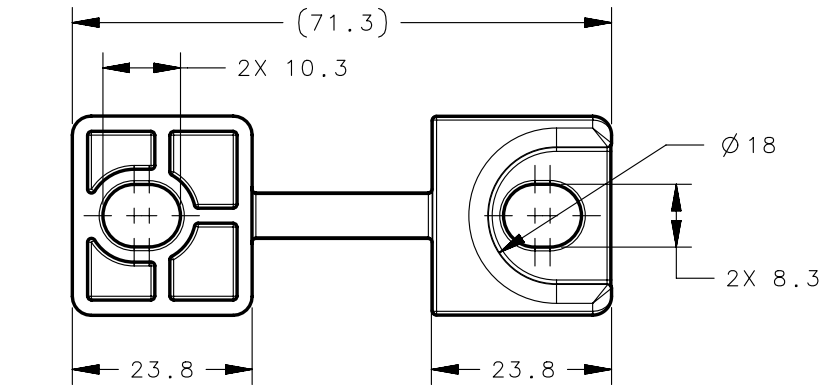


MOUNTING NUT
ZAMAC 3, BLACK
POWDER COATING

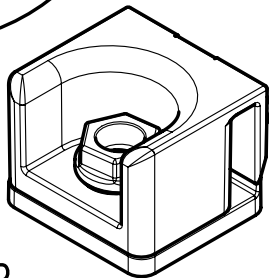


ROD GUIDE KIT,
A5-F87-101-69

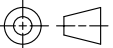
FOR USE WITH E5
AND #92 LATCHES



FOLD TO
INSTALL

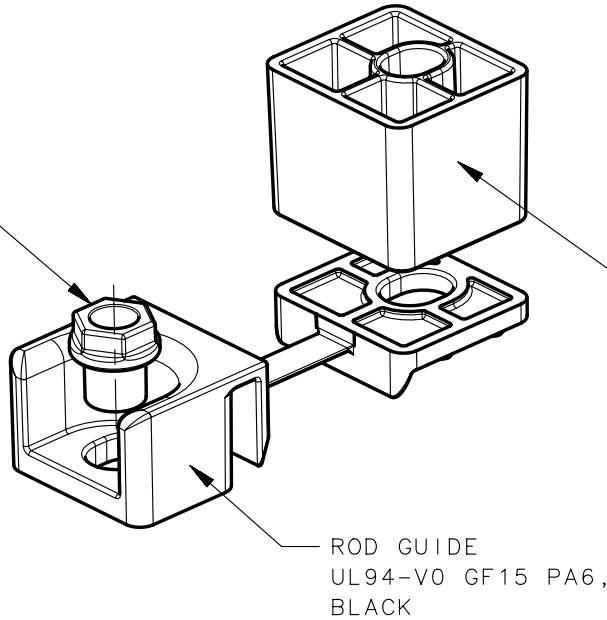


AS INSTALLED

	THIRD ANGLE PROJECTION				<h1>southco[®]</h1> <p>CONNECT • CREATE • INNOVATE</p>			
	MILLIMETERS [IN]							
SURFACE AREA	TOLERANCES UNLESS OTHERWISE NOTED	DESCRIPTION						
VOLUME	ALL DIMENSIONS WITHOUT TOLERANCES ARE FOR REFERENCE ONLY.	Multi-point Latching System FLAT ROD GUIDE KIT, PLATE ACTUATOR VERSION						
PROPRIETARY ITEM		SIZE	SYSTEM	DWG NO.				
EXCEPT FOR USES EXPRESSLY GRANTED IN WRITING, INFORMATION DISCLOSED HEREON IS CONFIDENTIAL AND ALL RIGHTS, PATENT AND OTHERWISE, ARE RESERVED BY SOUTHCO, INC.		A4	NX	J-A5-F87-10				
	PER ASME Y14.5M-1994	DRAWN BY	DATE	SCALE	SHEET			
		IR/	10 OCT 12	DNS	1 OF 3			

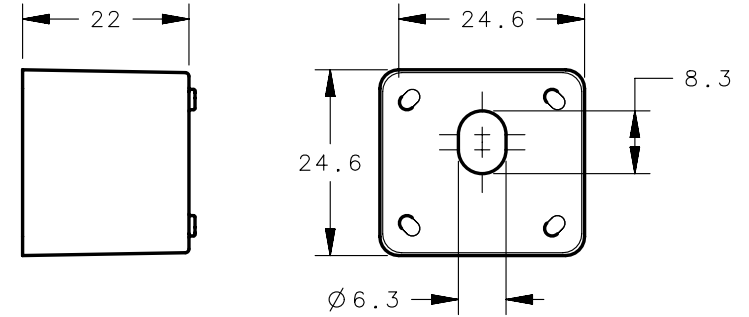
REVISION HISTORY			
REV	DATE	BY	DESCRIPTION
B	08JUL2013	MJS/IR	PRN: P2013-1316

MOUNTING NUT
ZAMAC 3, BLACK
POWDER COATING

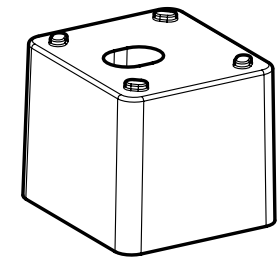


ROD GUIDE SPACER
UL94-V0 GF15 PA6,
BLACK

ROD GUIDE
UL94-V0 GF15 PA6,
BLACK

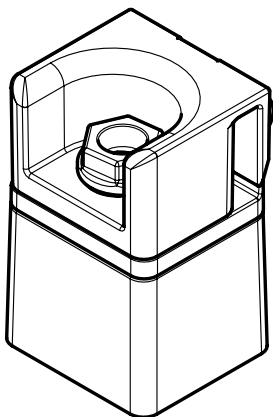


SPACER



**ROD GUIDE KIT
A5-F87-102-69**

FOR USE WITH #62
AND H3 ACTUATOR
VERSION LATCHES



AS INSTALLED

	THIRD ANGLE PROJECTION				<p>southco[®] CONNECT • CREATE • INNOVATE</p>			
	MILLIMETERS [IN]							
SURFACE AREA	TOLERANCES UNLESS OTHERWISE NOTED	DESCRIPTION						
VOLUME	ALL DIMENSIONS WITHOUT TOLERANCES ARE FOR REFERENCE ONLY.	Multi-point Latching System FLAT ROD GUIDE KIT						
PROPRIETARY ITEM	PER ASME Y14.5M-1994	SIZE	SYSTEM	DWG NO.				
EXCEPT FOR USES EXPRESSLY GRANTED IN WRITING, INFORMATION DISCLOSED HEREON IS CONFIDENTIAL AND ALL RIGHTS, PATENT AND OTHERWISE, ARE RESERVED BY SOUTHCO, INC.		A4	NX	J-A5-F87-10				
		DRAWN BY	DATE	SCALE	SHEET			
		IR/	10 OCT 12	DNS	2 OF 3			

REVISION HISTORY			
REV	DATE	BY	DESCRIPTION
B	08JUL2013	MJS/IR	PRN: P2013-1316

MOUNTING NUT,
STAINLESS,
PASSIVATED

WASHER,
STAINLESS,
PASSIVATED

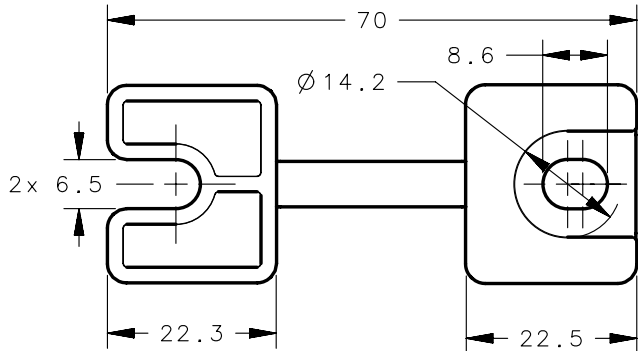
ROD GUIDE
UL94-V0 GF15 PA6,
BLACK

M6 X 1-6H THREAD

10

3.2

MOUNTING NUT



**ROD GUIDE KIT
A5-F87-103-69**

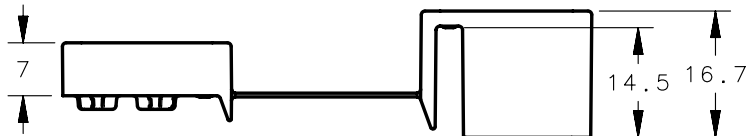
FOR USE WITH
LINEAR ACTUATOR
VERSION H3 LATCHES

Ø 12

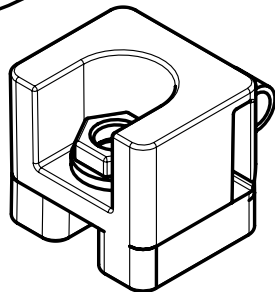
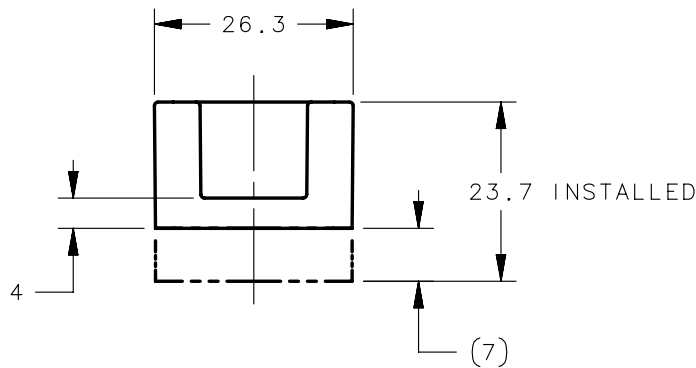
Ø 6.4

1.6

MOUNTING WASHER



FOLD TO
INSTALL



AS INSTALLED

	THIRD ANGLE PROJECTION				<p>southco[®] CONNECT • CREATE • INNOVATE</p>			
	MILLIMETERS [IN]							
SURFACE AREA	TOLERANCES UNLESS OTHERWISE NOTED	DESCRIPTION			Multi-point Latching System			
VOLUME	ALL DIMENSIONS WITHOUT TOLERANCES ARE FOR REFERENCE ONLY.	FLAT ROD GUIDE KIT, LINEAR ACTUATOR VERSION						
PROPRIETARY ITEM	PER ASME Y14.5M-1994	SIZE	SYSTEM	DWG NO.	J-A5-F87-10			
EXCEPT FOR USES EXPRESSLY GRANTED IN WRITING, INFORMATION DISCLOSED HEREON IS CONFIDENTIAL AND ALL RIGHTS, PATENT AND OTHERWISE, ARE RESERVED BY SOUTHCO, INC.		A4	NX		DRAWN BY	DATE	SCALE	SHEET
					IR/	10 OCT 12	DNS	3 OF 3