

southco®

PROPRIETARY ITEM - EXCEPT FOR USES EXPRESSLY GRANTED IN WRITING INFORMATION DISCLOSED HEREON IS CONFIDENTIAL AND ALL RIGHTS PATENT AND OTHERWISE ARE RESERVED BY SOUTHCO, INC.

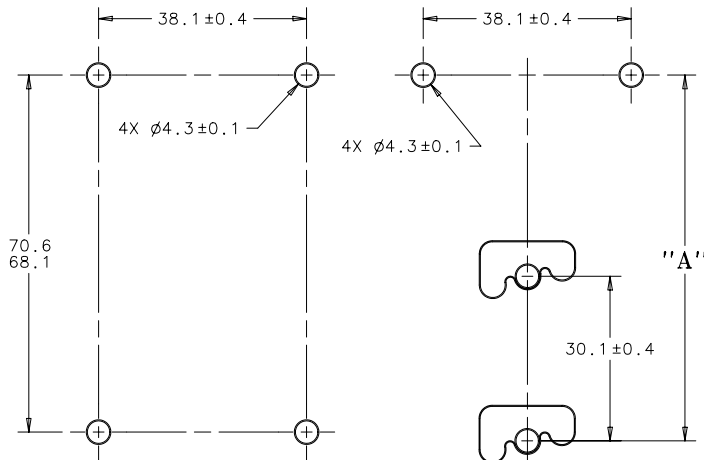
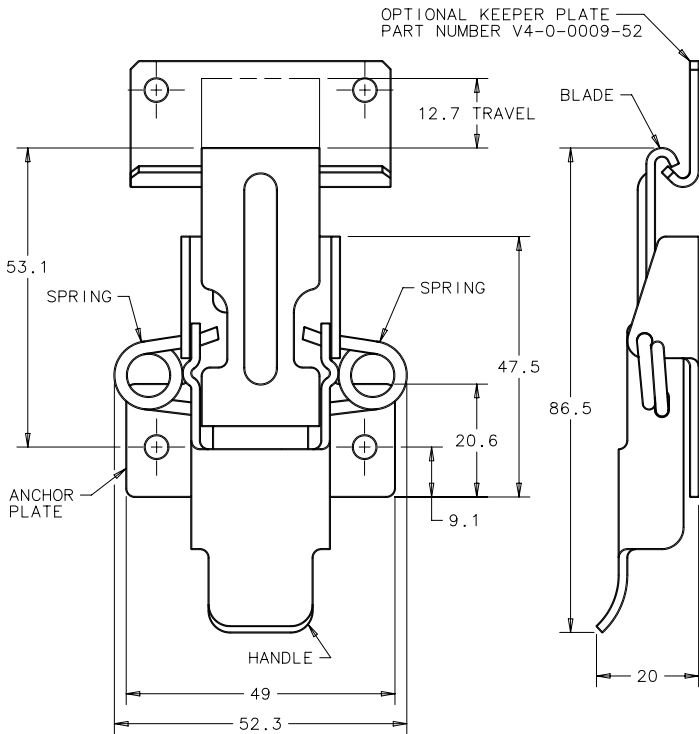
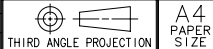
V4 VERSA LATCH - 800 SERIES

DATE	DRAWN	CHKD	SCALE	DRAWING NUMBER
02JAN97	RJB		1:1	J-V4-0006

REV	DATE	DRAWN/CHKD	DESCRIPTION	PART NUMBER	ANCHOR PLATE, HANDLE & BLADE MATERIAL & FINISH	SPRING MATERIAL & FINISH
A	17DEC97	RJB	PRN: V4-10			
B	12SEP2000	FJB/CHW	PRN: V4-16	V4-0006-00	1020 STEEL; NATURAL + OIL FILM	300 STAINLESS STEEL; NATURAL
C	17JUN2004	VNI/MDY	PRN: P2004-0649	V4-0006-02	1020 STEEL; ZINC PLATED, BRIGHT CHROMATE DIP	300 STAINLESS STEEL; BRIGHT BURNISHED
D	27SEP2005	MDY/RLR	PRN: P2005-1308	V4-0006-52	300 SERIES STAINLESS STEEL; NATURAL	300 STAINLESS STEEL; BRIGHT BURNISHED
E	07OCT2005	MDY/RLR	PRN: P2005-1310	V4-0006-80	1020 STEEL; ZINC ALLOY PLATED, BLACK CHROMATE DIP	300 STAINLESS STEEL; BLACK ZINC ALLOY

MILLIMETERS

ALL DIMENSIONS WITHOUT TOLERANCES ARE FOR REFERENCE ONLY.



FIXED MOUNTING

ADJUSTABLE MOUNTING

NOTES:

- A. SPRING LOADED ANCHOR PLATE COMPENSATES UP TO 0.09 INCHES FOR IRREGULARITIES IN SEALING AND GASKET SET.

POSITION NUMBER	"A"	
	MIN	MAX
1	71.4	73.7
2	69.9	72.1
3	68	70.6