



PROPRIETARY ITEM - EXCEPT FOR USES EXPRESSLY GRANTED IN WRITING INFORMATION DISCLOSED HEREON IS CONFIDENTIAL AND ALL RIGHTS PATENT AND OTHERWISE ARE RESERVED BY SOUTHCO, INC.

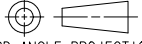
# VERSA LATCH

DATE	DRAWN	CHKD	SCALE	DRAWING NUMBER
20AUG93	TJH		1:1	J-V2-0068

REV	DATE	DRAWN/CHKD	DESCRIPTION	ASSEMBLY NUMBER	MATERIAL	FINISH
A	02DEC98	CHW	PRN: V2-46	V2-0068-07	SEE NOTE A	SEE NOTE A

**INCHES**

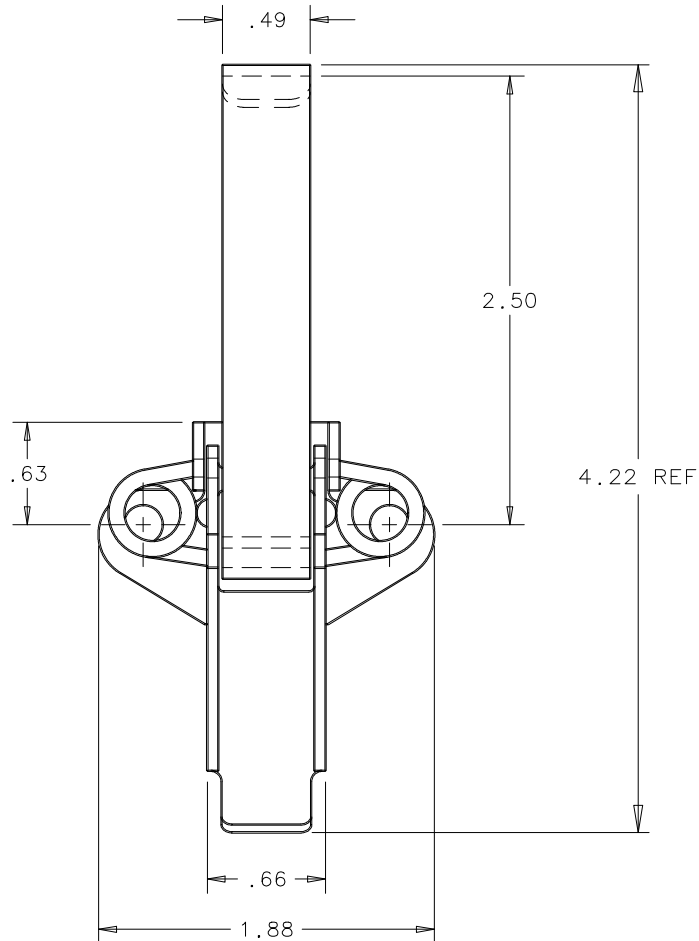
ALL DIMENSIONS WITHOUT TOLERANCES ARE FOR REFERENCE ONLY.



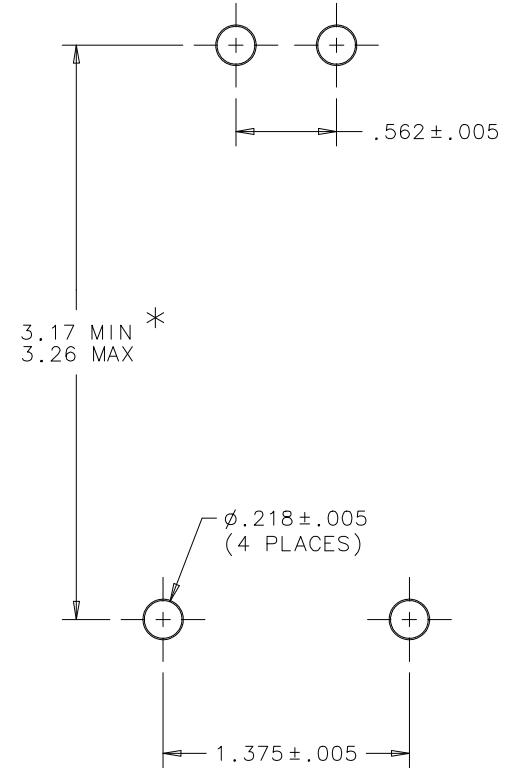
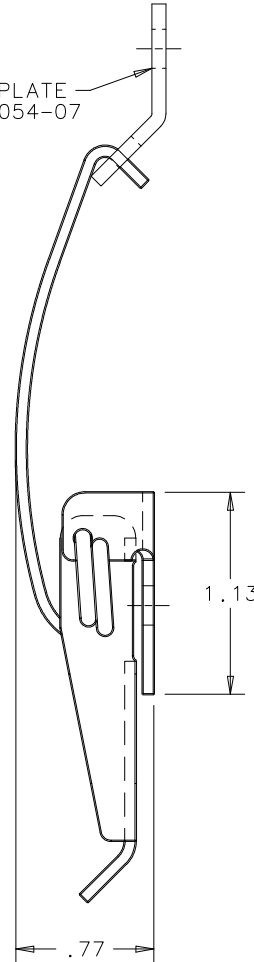
THIRD ANGLE PROJECTION

A  
PAPER  
SIZE

NOTE A - MATERIAL AND FINISH:  
ANCHOR PLATE, SPRINGS, LEVER, AND BLADE ARE CARBON STEEL;  
ZINC PLATE, BRIGHT CHROMATE DIP.



OPTIONAL KEEPER PLATE  
PART NUMBER V2-0054-07



\* SPRING LOADED ANCHOR PLATE COMPENSATES UP TO 0.09 INCHES FOR IRREGULARITIES IN SEALING SURFACES AND GASKET SET.