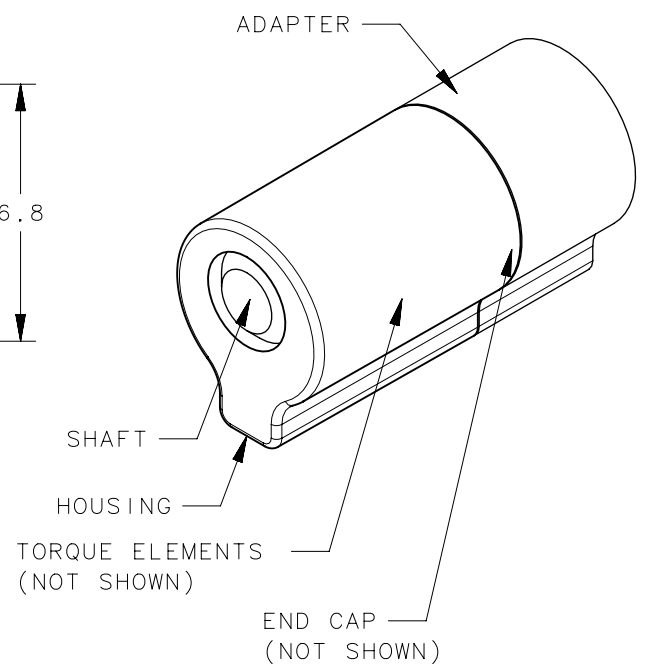
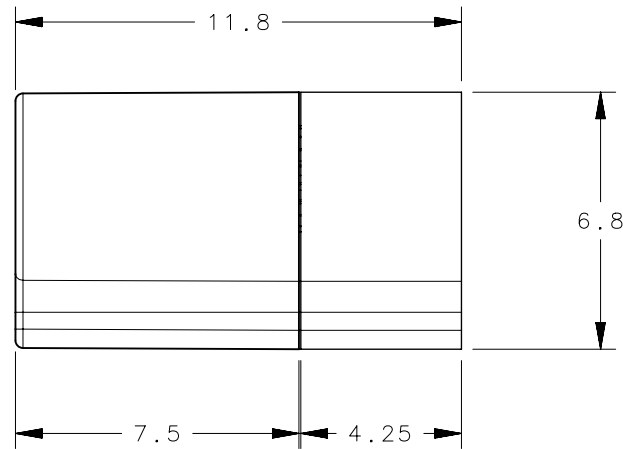
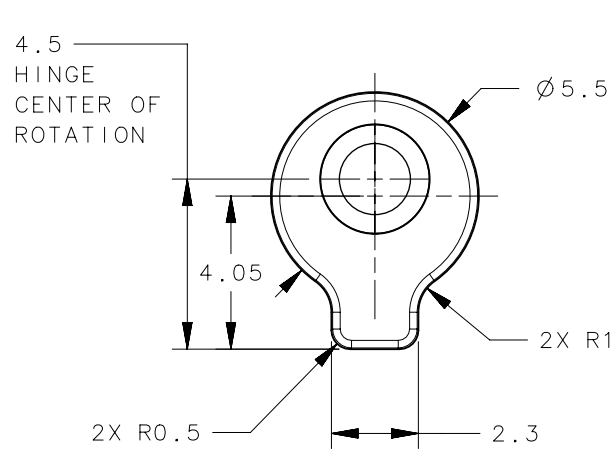
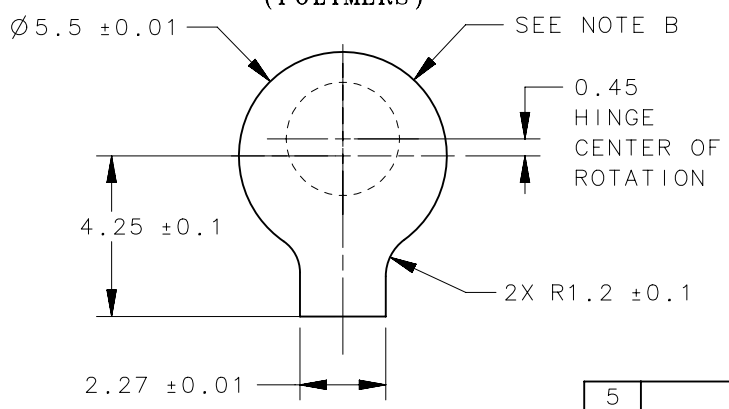


REVISION HISTORY			
REV	DATE	BY	DESCRIPTION
F	07JUL2017	PG/YGC	PRN: P2017-1629



PANEL PREPARATION (POLYMERS)



MAXIMUM DRAFT: 0.5°
 MAXIMUM DEPTH:
 ADAPTER: 4.15
 HOUSING: 7.40

PART NUMBER	STATIC TORQUE FORWARD/REVERSE Nm(in-lbf) ±20%
ST-5A-10S-33	0.113 (1.00)
ST-5A-16S-33	0.181 (1.60)
ST-5A-23S-33	0.260 (2.30)
ST-5A-30S-33	0.339 (3.00)

5	-	SHAFT	STEEL	NATURAL	
4	-	HOUSING	ZINC ALLOY		
3	-	TORQUE ELEMENT	STEEL		
2	-	ADAPTER	ALUMINUM ALLOY		
1	-	CAP	ZINC ALLOY		
-	ST-5A-XXS-33	ASSEMBLY	-	-	SEE TABLE ABOVE FOR SPECIFIC PART NUMBER
NO.	PART NUMBER	TYPE OF COMPONENT	MATERIAL	FINISH	GENERAL NOTES

NOTES:

- A. RoHS COMPLIANT.
- B. FOR MOUNTING IN MATERIALS OTHER THAN POLYMERS CONTACT SOUTHCO FOR DETAILS.

THIRD ANGLE PROJECTION		 CONNECT • CREATE • INNOVATE			
MILLIMETERS [IN]					
SURFACE AREA		TOLERANCES UNLESS OTHERWISE NOTED		DESCRIPTION HINGE & CONTROLLED MOTION DEVICE ST-5A HINGE ASSEMBLY	
VOLUME		ALL DIMENSIONS WITHOUT TOLERANCES ARE FOR REFERENCE ONLY.		SIZE A	SYSTEM NX
PROPRIETARY ITEM EXCEPT FOR USES EXPRESSLY GRANTED IN WRITING, INFORMATION DISCLOSED HEREON IS CONFIDENTIAL AND ALL RIGHTS, PATENT AND OTHERWISE, ARE RESERVED BY SOUTHCO, INC.		PER ASME Y14.5M-1994		DWG NO. J-ST-5A	
		DRAWN BY PG	DATE 07DEC10	SCALE 5:1	SHEET 1 OF 1