



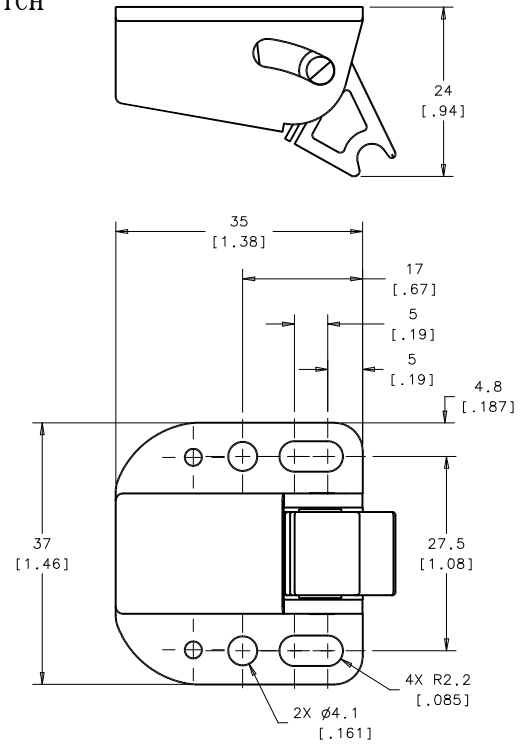
PROPRIETARY ITEM - EXCEPT FOR USES EXPRESSLY GRANTED IN WRITING INFORMATION DISCLOSED HEREON IS CONFIDENTIAL AND ALL RIGHTS PATENT AND OTHERWISE ARE RESERVED BY SOUTHCO, INC.

SNAPPY LATCH ASSEMBLY

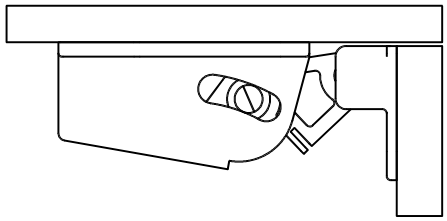
REV	DATE	DRAWN/CHKD	DESCRIPTION	ITEM	PART NUMBER	MATERIAL
				ASSEMBLY	MT-01-10-7	NYLON, WHITE
				HOUSING		NYLON, WHITE
				PAWL		NYLON, WHITE
				GUIDE		NYLON, WHITE
				STRIKER		NYLON, WHITE
				SPRING		STAINLESS STEEL

DRAWING NUMBER	J-MT-01-10
DRAWN/CHKD	LCR A/JH1.5:1
DATE	18NOV2003
DRAWING SCALE	
MILLIMETERS [INCHES]	
ALL DIMENSIONS WITHOUT TOLERANCES ARE FOR REFERENCE ONLY.	
THIRD ANGLE PROJECTION	
PAPER SIZE	A3

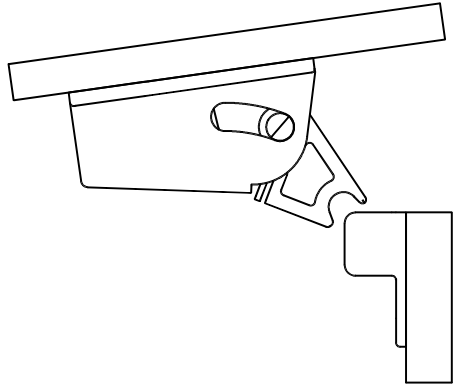
LATCH



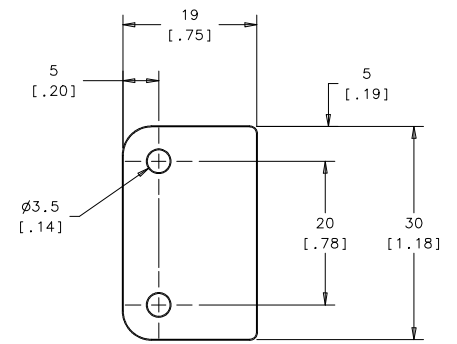
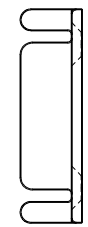
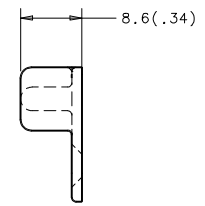
CLOSED



OPEN



STRIKER



4 X CLEARANCE FOR M4 OR NO.8 SCREW

2 X CLEARANCE HOLE FOR M3 OR NO.4 SCREW

PANEL PREPARATION