

southco

PROPRIETARY ITEM - EXCEPT FOR USES EXPRESSLY GRANTED IN WRITING INFORMATION DISCLOSED HEREON IS CONFIDENTIAL AND ALL RIGHTS PATENT AND OTHERWISE ARE RESERVED BY SOUTHCO, INC.

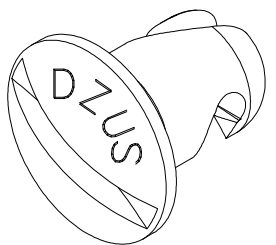
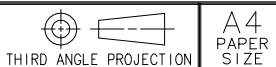
D4 FINISHED STUD

| | | | | |
|-----------|-------|------|-------|----------------|
| DATE | DRAWN | CHKD | SCALE | DRAWING NUMBER |
| 26AUG2008 | CW | MJS | 5:1 | J-D4-A3 |

| REV | DATE | DRAWN/CHKD | DESCRIPTION | PART NUMBER | MATERIAL | FINISH |
|-----|-----------|------------|---------------------|-------------|----------|-----------------------------|
| A | 26AUG2008 | CW/MJS | INITIAL DWG RELEASE | D4-A3-XX | STEEL | ZINC PLATE PLUS CHROMATE |
| B | 21MAR2017 | CMS/MGG | PRN: P2017-0671 | D4-A3-XXQA | STEEL | CADMIUM PLATE PLUS CHROMATE |
| | | | | | | |
| | | | | | | |
| | | | | | | |
| | | | | | | |
| | | | | | | |
| | | | | | | |
| | | | | | | |
| | | | | | | |

MILLIMETERS
[INCHES]

ALL DIMENSIONS WITHOUT TOLERANCES ARE FOR REFERENCE ONLY.



SCALE 4:1

| PART NUMBER | DIM "A" | DIM "B" |
|-------------|--------------|---------------|
| D4-A3-15 | 3.81/[.150] | 5.72/[.225] |
| D4-A3-20 | 5.08/[.200] | 6.99/[.275] |
| D4-A3-25 | 6.35/[.250] | 8.26/[.325] |
| D4-A3-30 | 7.62/[.300] | 9.53/[.375] |
| D4-A3-35 | 8.89/[.350] | 10.80/[.425] |
| D4-A3-40 | 10.16/[.400] | 12.07/[.475] |
| D4-A3-50 | 12.70/[.500] | 14.61/[.575] |
| D4-A3-60 | 15.24/[.600] | 17.15/[.675] |
| D4-A3-70 | 17.78/[.700] | 19.69/[.775] |
| D4-A3-80 | 20.32/[.800] | 22.23/[.875] |
| D4-A3-90 | 22.86/[.900] | 24.77/[.975] |
| D4-A3-100 | 25.4/[1.00] | 27.31/[1.075] |
| D4-A3-110 | 27.94/[1.10] | 29.85/[1.175] |
| D4-A3-120 | 30.48/[1.20] | 32.39/[1.275] |
| D4-A3-130 | 33.02/[1.30] | 34.93/[1.375] |
| D4-A3-140 | 35.56/[1.40] | 37.47/[1.475] |
| D4-A3-150 | 38.10/[1.50] | 40.01/[1.575] |
| D4-A3-160 | 40.64/[1.60] | 42.55/[1.675] |
| D4-A3-170 | 43.18/[1.70] | 45.09/[1.775] |
| D4-A3-180 | 45.72/[1.80] | 47.63/[1.875] |
| D4-A3-190 | 48.26/[1.90] | 50.17/[1.975] |
| D4-A3-200 | 50.80/[2.00] | 52.71/[2.075] |
| D4-A3-210 | 53.34/[2.10] | 55.25/[2.175] |
| D4-A3-220 | 55.88/[2.20] | 57.79/[2.275] |
| D4-A3-230 | 58.42/[2.30] | 60.33/[2.375] |
| D4-A3-240 | 60.96/[2.40] | 62.87/[2.475] |
| D4-A3-250 | 63.50/[2.50] | 65.41/[2.575] |

