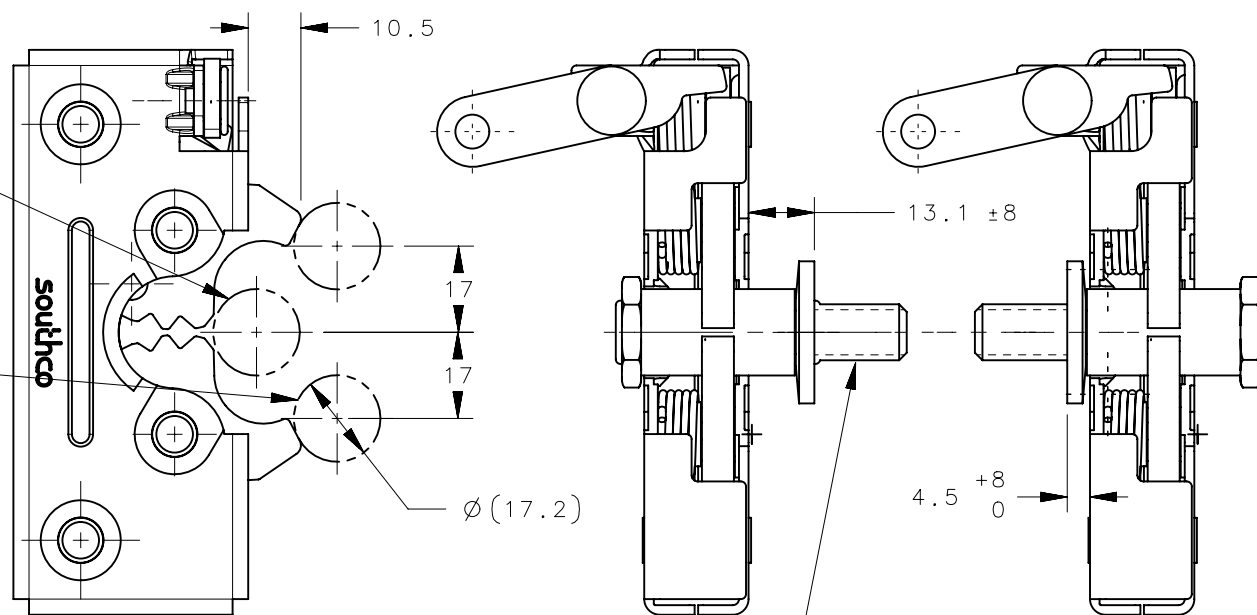


THE TOLERANCE BETWEEN THE —
LATCH AND STRIKER BOLT
ASSUMES A NON-RIGID DOOR
INSTALLATION THAT WILL
ALLOW THE DOOR TO MOVE
INTO THE NOMINAL POSITION
DURING LATCHING. RIGID
DOORS MUST HAVE THE STRIKER
INSTALLED PER THE PANEL
PREPARATION RECOMMENDATION

AVAILABLE STRIKER BOLTS	
PART NUMBER	THREAD SIZE
R4-90-491-10	7/16-14
R4-90-4101-10	1/2-13
R4-90-441-10	M12-1.75

STRIKER BOLT ASSEMBLY
(SOLD SEPARATELY)
SEE J-R4-90-400
FOR DETAILS

STRIKER SHOWN AT NOMINAL
MOUNTING LOCATIONS FROM
BOTH SIDES



NOTES:

1. ASSEMBLY COMPLIES WITH LATCH REQUIREMENTS OF FMVSS 206 WHEN TESTED IN ACCORDANCE WITH SAE J839.

2. MATERIALS:

PINS, LEVER, RIVET: STEEL, ZINC PLATE BRIGHT CHROMATE
PAWLS, AND TRIGGER: HEAT TREATED CARBON STEEL, LUBRICATED WITH OVEN CURED DRY LUBRICANT.
SPRINGS: STAINLESS STEEL, PASSIVATED (BLACK OXIDE)
FRAME HSG. FRONT AND BACK: HIGH STRENGTH STEEL, ZINC PLATED BRIGHT CHROMATE

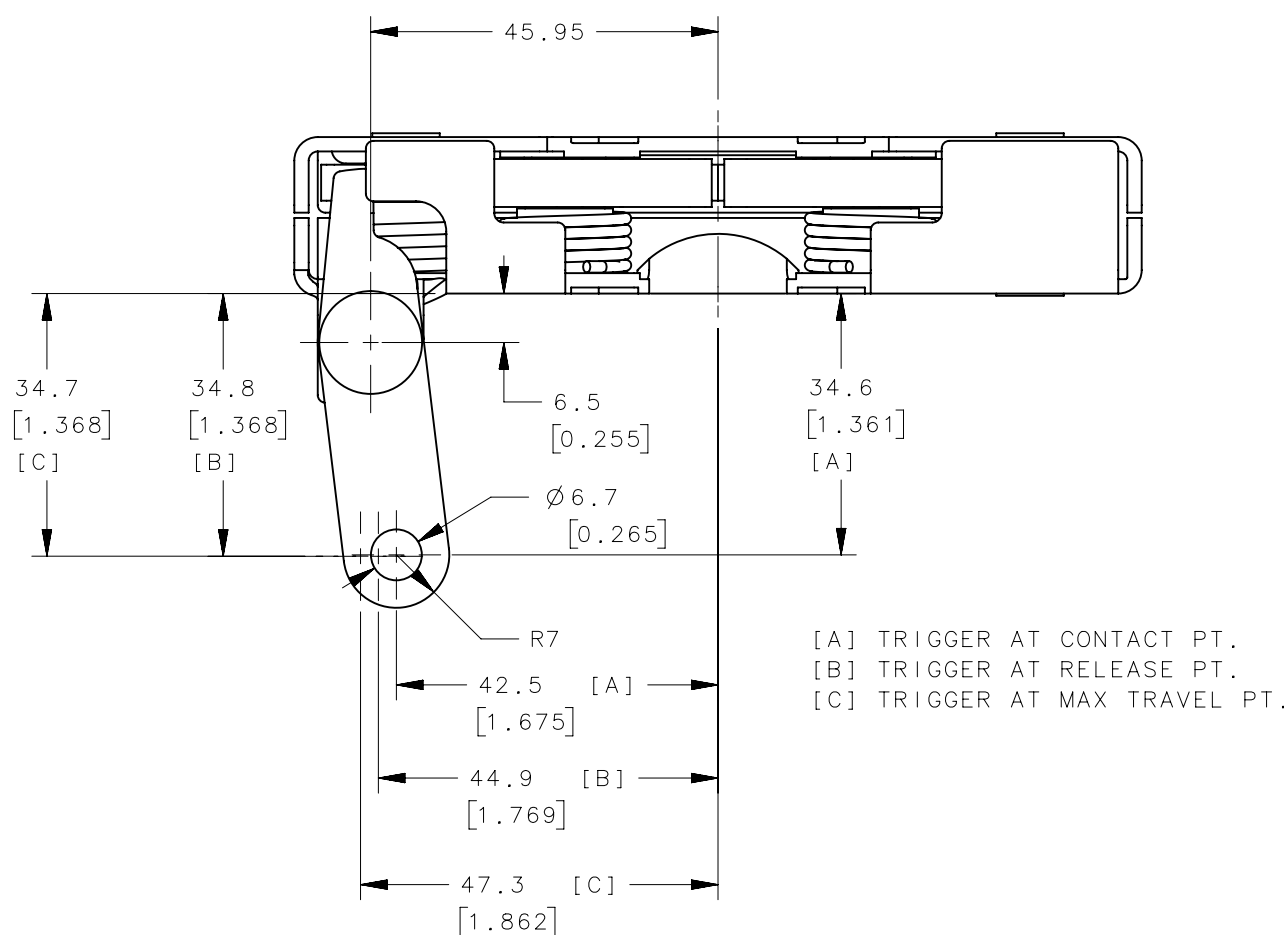
3. MAXIMUM RECCOMENDED MOUNTING TOURQE NOT TO EXCEDE 13.3 N-m (120 in-lbs)

4. INSTALLATION INSTRUCTIONS:

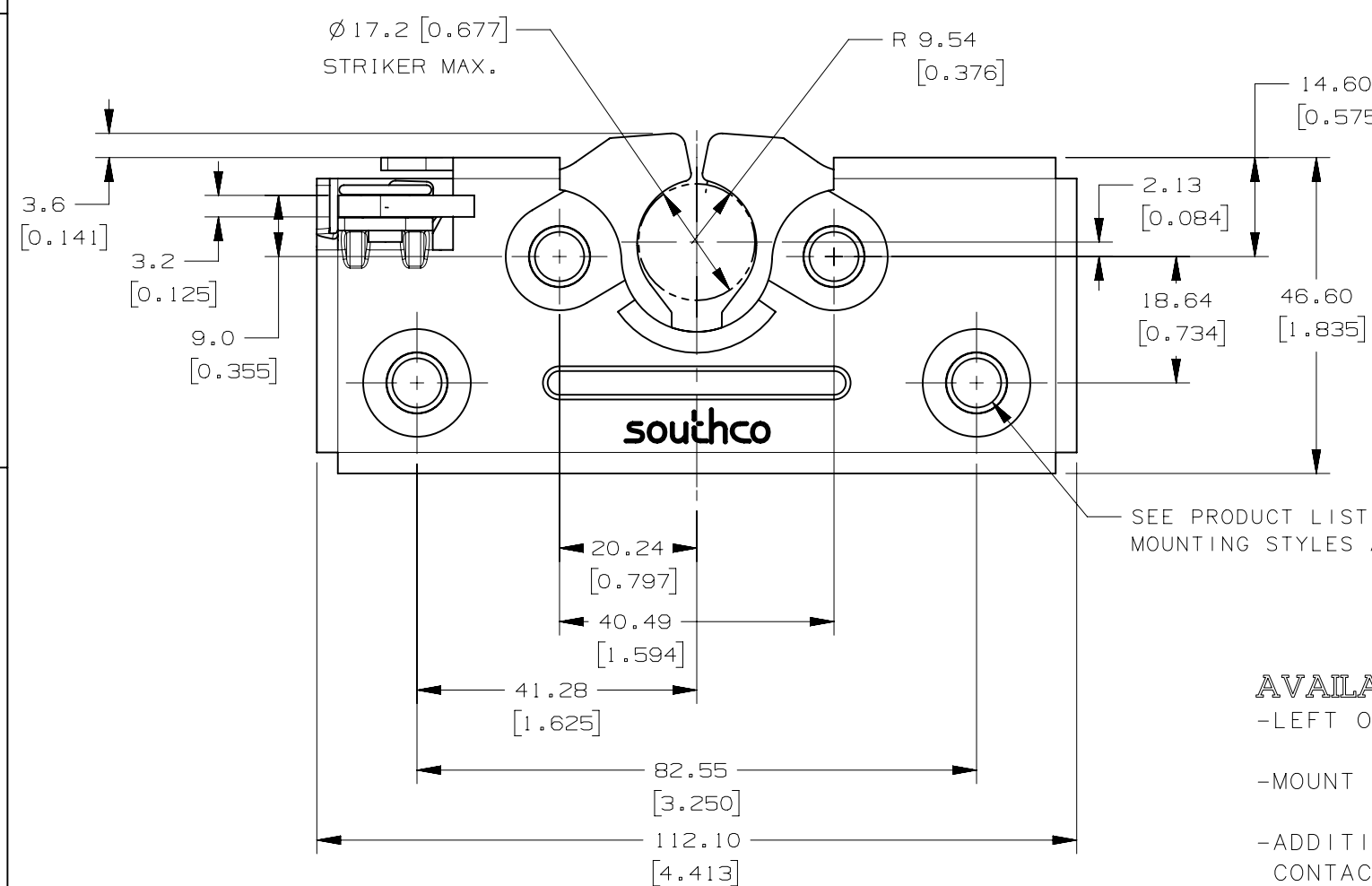
- INSTALL SOUTHCO STRIKER BOLT ASSEMBLY IN DOOR FRAME
- CLOSE DOOR CHECKING FOR INTERFERENCE OR MISALIGNMENT
- ADJUST STRIKER AS NECESSARY SHIM IF REQUIRED TO ACHIEVE PROPER POSITIONING OF STRIKER HEAD.
- ADJUST STRIKER SO IT ENGAGES IN THE CENTER OF THE LATCH
- VERIFY THAT BOTH STAGES OF LATCH ARE FUNCTIONAL
- CHECK DOOR ALIGNMENT AND SEAL PRESSURES.

5. PAWL OPENING ALLOWS FOR SELF-ALIGNMENT OF FLEXIBLE DOOR SYSTEMS ONLY, CONTACT SOUTHCO SALES OR ENGINEERING FOR APPLICATION ASSISTANCE.

REVISION HISTORY			
REV	DATE	BY	DESCRIPTION
01	21NOV07	CMK	INITIAL RELEASE: UPDATED IN NX
A	26JUN08	CMK	RELEASED
B	29MAY08	CMK	PRN: 2009-0669
C	10AUG09	CMK	PRN: 2009-0946



[A] TRIGGER AT CONTACT PT.
[B] TRIGGER AT RELEASE PT.
[C] TRIGGER AT MAX TRAVEL PT.



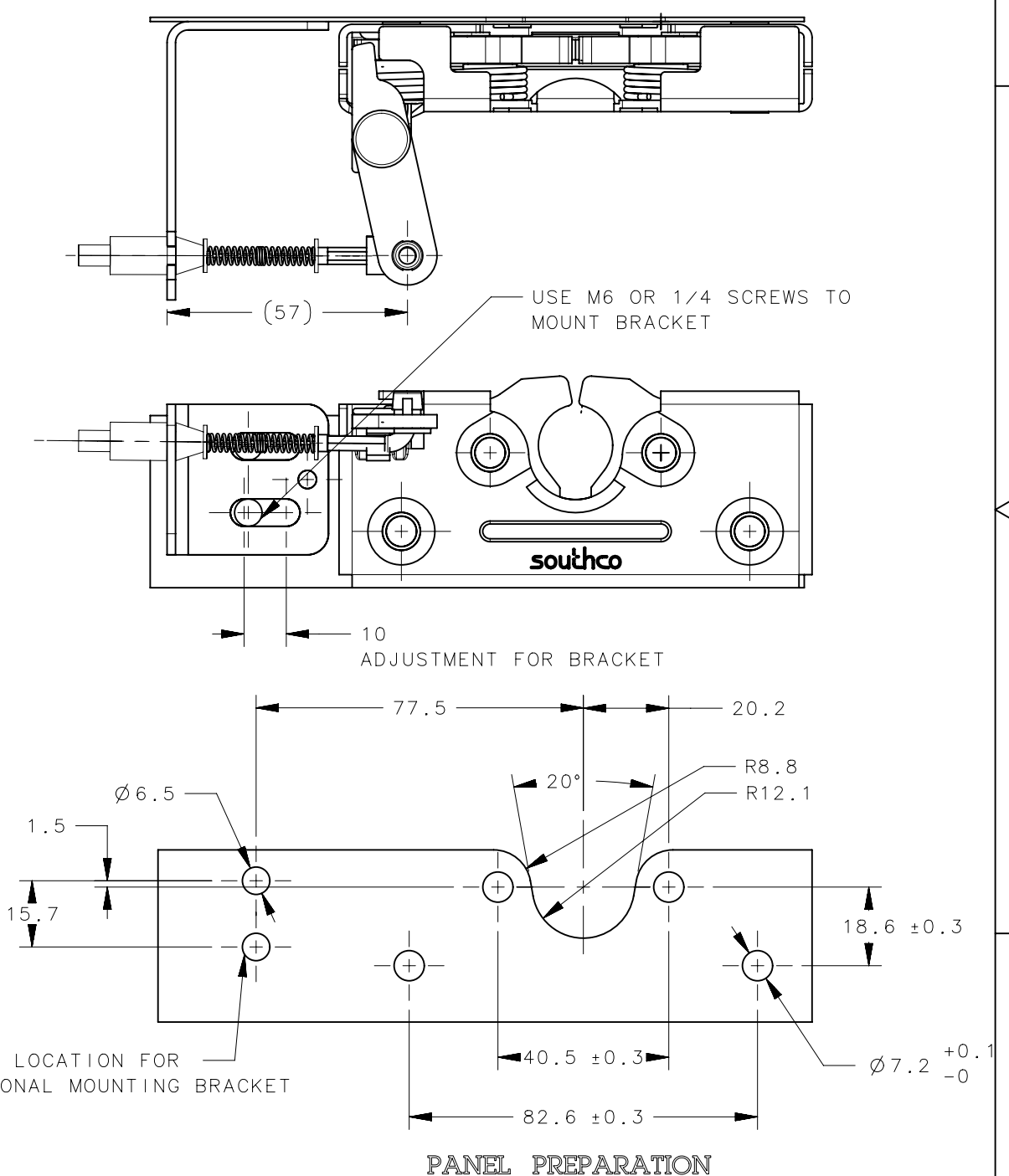
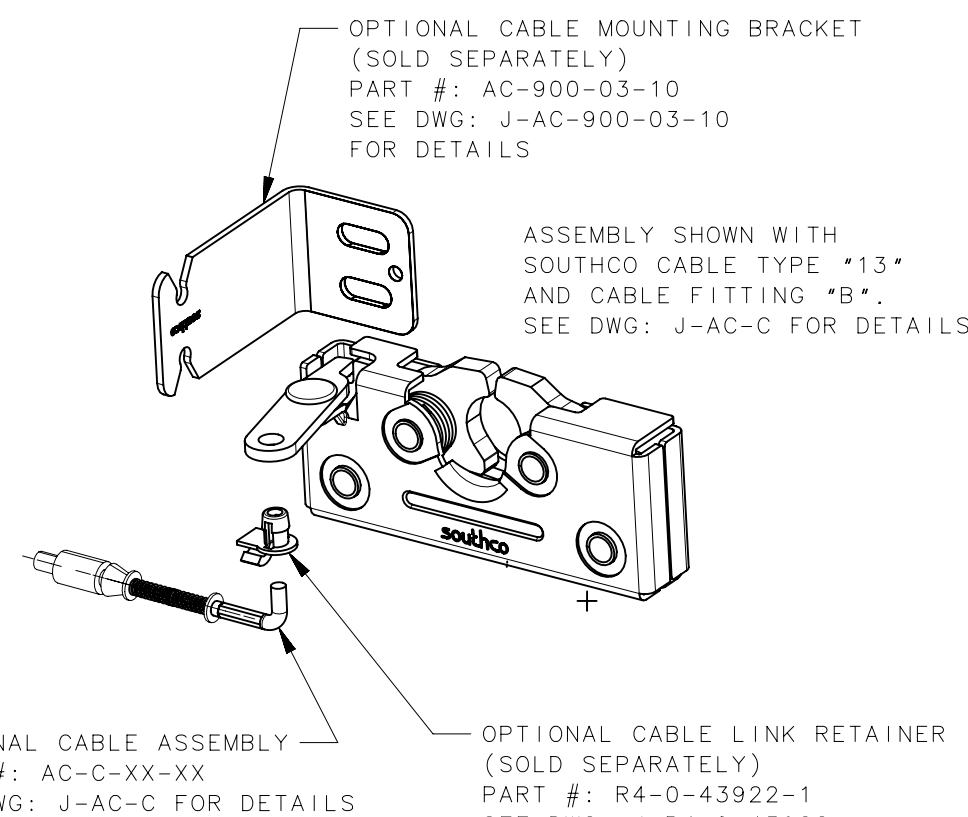
— SEE PRODUCT LIST FOR
MOUNTING STYLES AVAILABLE

AVAILABLE OPTIONS

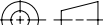

-LEFT OR RIGHT HAND CONFIGURATIONS (LEFT HAND SHOWN)

-MOUNT WITH THRU HOLE, 1/4-20, OR M6x1 OPTIONS

-ADDITIONAL LEVER OPTIONS AVAILABLE UPON REQUEST:
CONTACT SOUTHCO ENGINEERING AND/OR SALES



R4-50-42-101-10	LEFT HANDED	M6 MOUNT
R4-50-41-101-10	LEFT HANDED	1/4-20 MOUNT
R4-50-40-101-10	LEFT HANDED	THRU MOUNT
R4-50-32-101-10	RIGHT HANDED	M6 MOUNT
R4-50-31-101-10	RIGHT HANDED	1/4-20 MOUNT
R4-50-30-101-10	RIGHT HANDED	THRU MOUNT
SOUTHC0 PART NUMBER	HANDED	MOUNT STYLE

SOUTHCO PART NUMBER		FINISH		MOUNT STYLE	
THIRD ANGLE PROJECTION 		 CONNECT • CREATE • INNOVATE			
MILLIMETERS [IN]					
SURFACE AREA		TITLE RH & LH ROTARY LATCH			
VOLUME					
PROPRIETARY ITEM <small>EXCEPT FOR USES EXPRESSLY GRANTED IN WRITING, INFORMATION DISCLOSED HEREIN IS CONFIDENTIAL AND ALL RIGHTS, PATENT AND OTHERWISE, ARE RESERVED BY SOUTHCO, INC.</small>		SIZE C	SYSTEM NX	DWG NO. J-R4-50	
PER ASME Y14.5M-1994		DRAWN BY CMK	DATE 21NOV07	SCALE 2/3	SHEET 1 OF 1