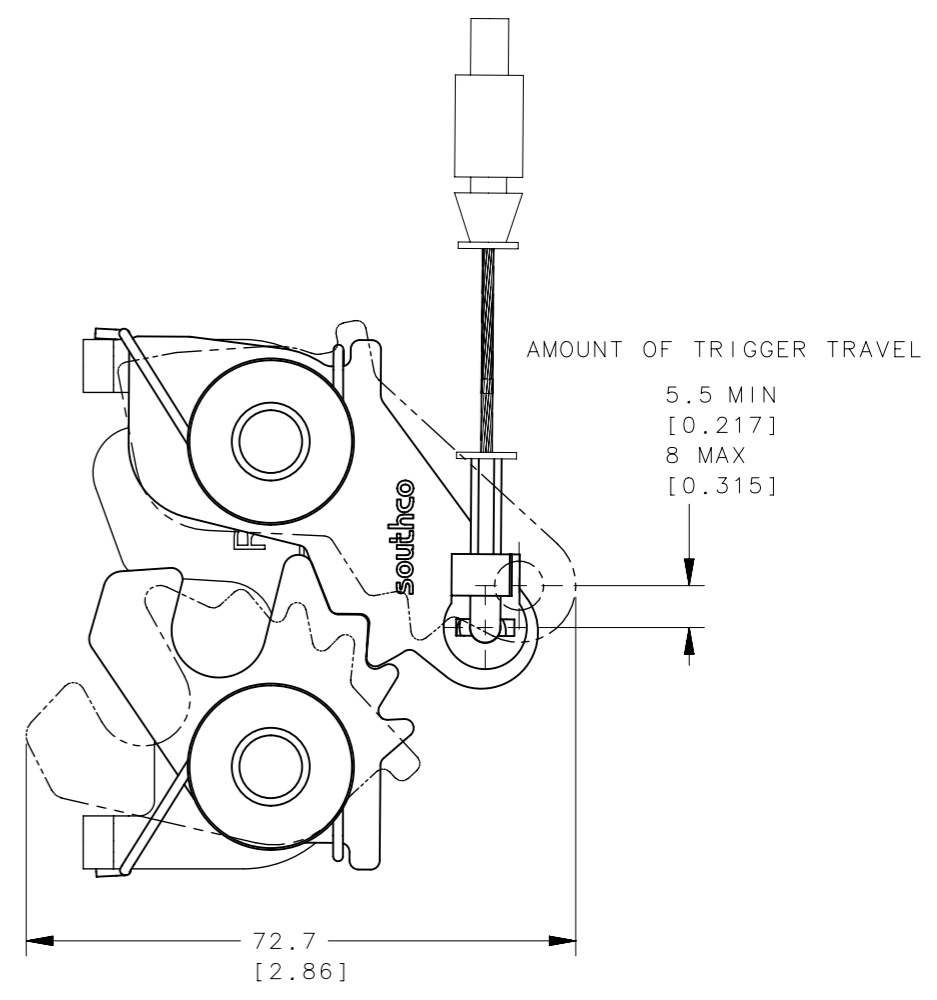
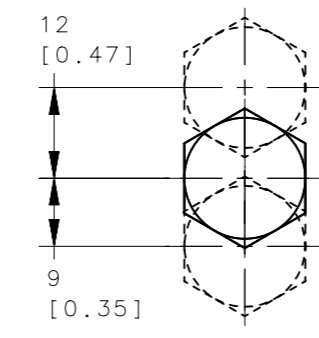
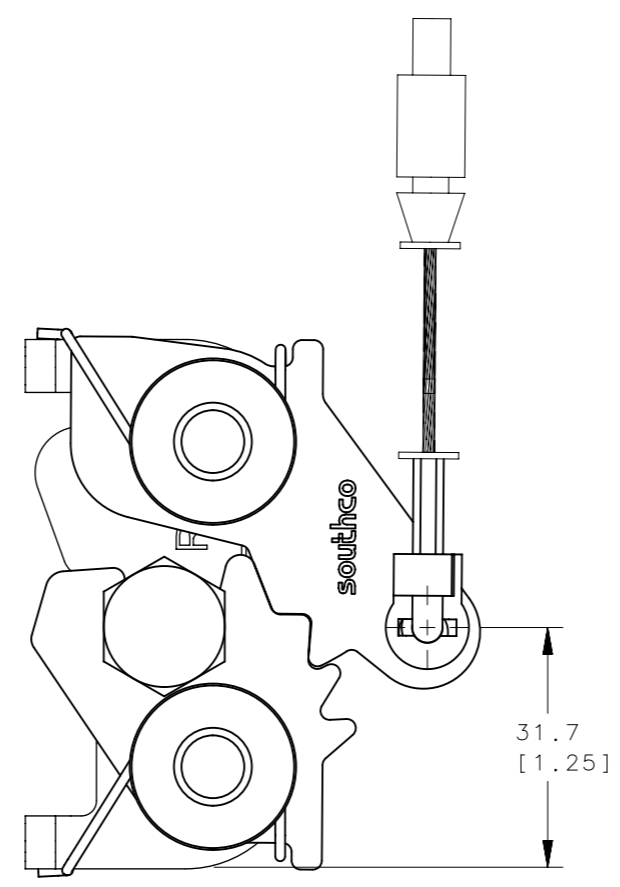
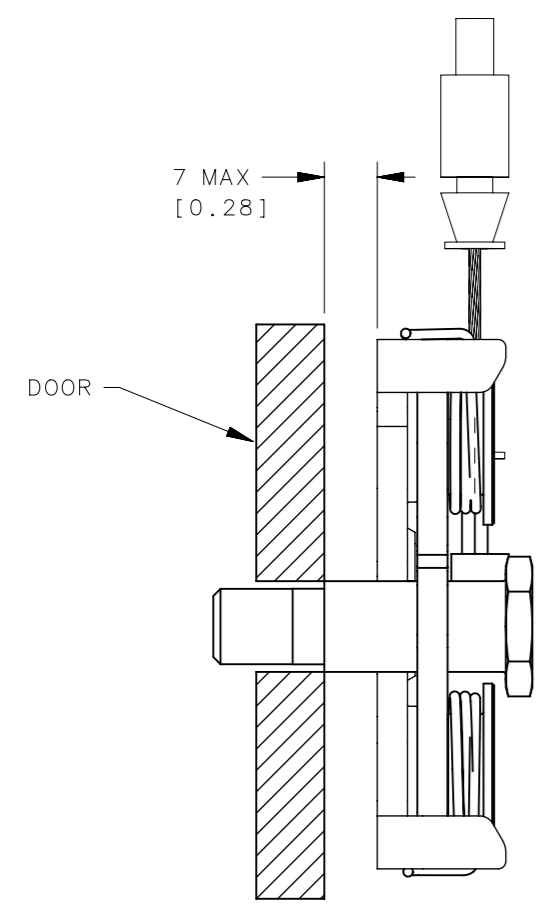


REVISION HISTORY			
REV	DATE	BY	DESCRIPTION
K	30JUN2016	AVC/NJF	PRN: P2016-1614



MISALIGNMENT VIEW
(SEE NOTE D)

NOTES:

D. THE TOLERANCE BETWEEN THE LATCH AND THE STRIKER BOLT ASSUMES A NON-RIGID DOOR INSTALLATION THAT WILL ALLOW THE DOOR TO MOVE INTO THE NOMINAL POSITION DURING LATCHING. RIGID DOORS MUST HAVE THE STRIKER INSTALLED PER THE PANEL PREPARATION RECOMMENDATION.

R4-20-30-501-10	Ø 8.3 THRU ASSEMBLY	Ø 8.3 ±0.12	SEE NOTE A	SEE NOTE A
R4-20-31-501-10	M8 THREAD ASSEMBLY	M8 x 1.25	SEE NOTE A	SEE NOTE A
R4-20-32-501-10	5/16-18 THREAD ASSEMBLY	5/16 - 18	SEE NOTE A	SEE NOTE A
SOUTHCO PART No.	ITEM	DIMENSION A	MATERIAL	FINISH

THIRD ANGLE PROJECTION									
									MILLIMETERS [IN]
TOLERANCES UNLESS OTHERWISE NOTED				DESCRIPTION					
ALL DIMENSIONS WITHOUT TOLERANCES ARE FOR REFERENCE ONLY.				PUSH TO CLOSE LATCH					
PROPRIETARY ITEM				SIZE	SYSTEM	DWG NO.			
EXCEPT FOR USES EXPRESSLY GRANTED IN WRITING, INFORMATION DISCLOSED HEREON IS CONFIDENTIAL AND ALL RIGHTS, PATENT AND OTHERWISE, ARE RESERVED BY SOUTHCO, INC.				A3	NX	J-R4-20-30-501			
PER ASME Y14.5M-1994				DRAWN BY	DATE	SCALE	SHEET		
				ACH/DRS	26MAR2009	1:1	2 OF 3		