

southco

PROPRIETARY ITEM - EXCEPT FOR USES EXPRESSLY GRANTED IN WRITING INFORMATION DISCLOSED HEREON IS CONFIDENTIAL AND ALL RIGHTS PATENT AND OTHERWISE ARE RESERVED BY SOUTHCO, INC.

CAM, TUBULAR KEY CAMLOCK

DATE	DRAWN	CHKD	SCALE
08JAN2007	LCR	AJH	1:1

DRAWING NUMBER
J-PT-T

REV	DATE	DRAWN/CHKD	DESCRIPTION
A	08JAN2007	LCR/AJH	PRN: P2007-0047

PART NUMBER	MATERIAL	FINISH
PT-ZIJJ	STEEL	ZINC PLATE, CHROMATE DIP

Z	CAM TYPE	I	OFFSET ±.010	JJ	LENGTH ±.020
T	NO HOOK	0	STRAIGHT	09	28.6
F	HOOK, TYPE 1	2	3.2		
W	HOOK, TYPE 2	4	6.4		

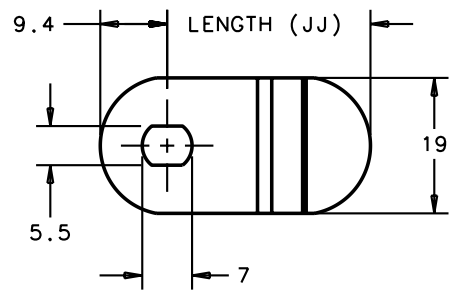
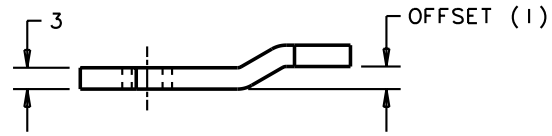
MILLIMETERS

ALL DIMENSIONS WITHOUT TOLERANCES ARE FOR REFERENCE ONLY.

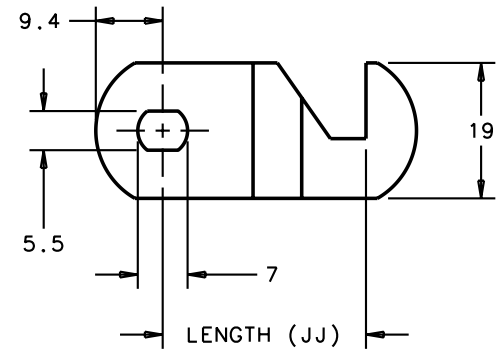
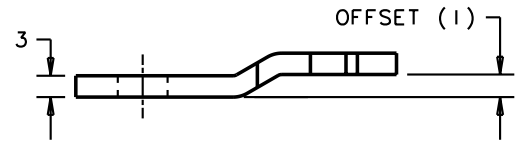
THIRD ANGLE PROJECTION  A4 PAPER SIZE

NOTES:
A. RoHS COMPLIANT

PART NUMBER PT-T209 SHOWN. SCALE 1:2



PART NUMBER PT-F209 SHOWN. SCALE 1:2



PART NUMBER PT-W209 SHOWN. SCALE 1:2

